

Product Name: USF1 (Phospho-Thr153) Rabbit Polyclonal Antibody
Catalog #: APRab06108

Summary

| | |
|------------------------|--|
| Production Name | USF1 (Phospho-Thr153) Rabbit Polyclonal Antibody |
| Description | Rabbit Polyclonal Antibody |
| Host | Rabbit |
| Application | WB |
| Reactivity | Human,Mouse,Rat |

Performance

| | |
|---------------------|--|
| Conjugation | Unconjugated |
| Modification | Phospho Antibody |
| Isotype | IgG |
| Clonality | Polyclonal |
| Form | Liquid |
| Storage | Store at 4°C short term. Aliquot and store at -20°C long term. Avoid freeze/thaw cycles. |
| Buffer | Liquid in PBS containing 50% glycerol, 0.5% BSA and 0.02% New type preservative N. |
| Purification | Affinity purification |

Immunogen

| | |
|--------------------------|--|
| Gene Name | USF1 BHLHB11 USF |
| Alternative Names | Upstream stimulatory factor 1 (Class B basic helix-loop-helix protein 11) (bHLHb11) (Major late transcription factor 1) |
| Gene ID | 7391.0 |
| SwissProt ID | P22415. |

Application

| | |
|-------------------------|---------------|
| Dilution Ratio | WB 1:500-2000 |
| Molecular Weight | 34kD |

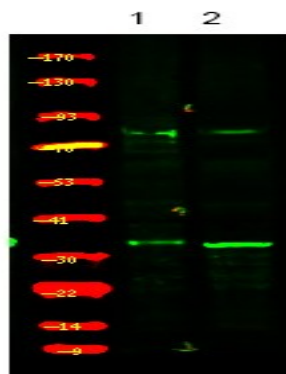
Background

Product Name: USF1 (Phospho-Thr153) Rabbit Polyclonal Antibody
Catalog #: APRab06108

disease:Genetic variations in USF1 are associated with combined hyperlipidemia type 1 (HYPLIP1) [MIM:602491]; also known as familial combined hyperlipidemia type 1 (FCHL1). HYPLIP1 is characterized by elevated levels of serum total cholesterol, triglycerides or both, and is observed in about 20% of individuals with premature coronary heart disease.,function:Transcription factor that binds to a symmetrical DNA sequence (E-boxes) (5'-CACGTG-3') that is found in a variety of viral and cellular promoters.,similarity:Contains 1 basic helix-loop-helix (bHLH) domain.,subunit:Efficient DNA binding requires dimerization with another bHLH protein. Binds DNA as an homodimer or a heterodimer (USF1/USF2). Interacts with varicella-zoster virus IE62 protein.,

Research Area

Image Data



Western Blot analysis of 1 HeLa cell, 2 LPS 100ng/mL 30min treated ,using primary antibody at 1:1000 dilution.
Secondary antibody was diluted at 1:10000

Note

For research use only.