

Product Name: LAB (Phospho-Tyr136) Rabbit Polyclonal Antibody
Catalog #: APRab05788

Summary

Production Name	LAB (Phospho-Tyr136) Rabbit Polyclonal Antibody
Description	Rabbit Polyclonal Antibody
Host	Rabbit
Application	WB
Reactivity	Human,Mouse,Rat

Performance

Conjugation	Unconjugated
Modification	Phospho Antibody
Isotype	IgG
Clonality	Polyclonal
Form	Liquid
Storage	Store at 4°C short term. Aliquot and store at -20°C long term. Avoid freeze/thaw cycles.
Buffer	Liquid in PBS containing 50% glycerol, 0.5% BSA and 0.02% New type preservative N.
Purification	Affinity purification

Immunogen

Gene Name	LAT2 LAB NTAL WBS15 WBSCR15 WBSCR5 HSPC046
Alternative Names	Linker for activation of T-cells family member 2 (Linker for activation of B-cells) (Membrane-associated adapter molecule) (Non-T-cell activation linker) (Williams-Beuren syndrome chromosomal region 15 protein) (Williams-Beuren syndrome chromosomal region 5 protein)
Gene ID	7462.0
SwissProt ID	Q9GZY6.

Application

Dilution Ratio	WB 1:500-2000
Molecular Weight	

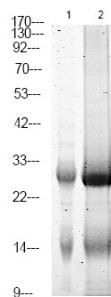
Product Name: LAB (Phospho-Tyr136) Rabbit Polyclonal Antibody
Catalog #: APRab05788

Background

disease: Defects in LAT2 may be a cause of certain cardiovascular and musculo-skeletal abnormalities observed in Williams-Beuren syndrome (WBS) [MIM:194050]. WBS is a rare developmental disorder. It is a contiguous gene deletion syndrome involving genes from chromosome band 7q11.23., function: Involved in FCER1 (high affinity immunoglobulin epsilon receptor)-mediated signaling in mast cells. May also be involved in BCR (B-cell antigen receptor)-mediated signaling in B-cells and FCGR1 (high affinity immunoglobulin gamma Fc receptor I)-mediated signaling in myeloid cells. Couples activation of these receptors and their associated kinases with distal intracellular events through the recruitment of GRB2., PTM: May be polyubiquitinated., PTM: Phosphorylated on tyrosines following cross-linking of BCR in B-cells, FCGR1 in myeloid cells, or FCER1 in mast cells; which induces the recruitment of GRB2., subcellular location: Present in lipid rafts., subunit: When phosphorylated, interacts with GRB2. May also interact with SOS1, GAB1 and CBL., tissue specificity: Highly expressed in spleen, peripheral blood lymphocytes, and germinal centers of lymph nodes. Also expressed in placenta, lung, pancreas and small intestine. Present in B-cells, NK cells and monocytes. Absent from T-cells (at protein level),

Research Area

Image Data



Western Blot analysis of 1 HepG2 cell, 2 Serum-free treated HepG2 cell, using primary antibody at 1:1000 dilution. Secondary antibody was diluted at 1:10000

Note

For research use only.