

**Product Name: c-Fes (Phospho-Tyr713) Rabbit Polyclonal Antibody**  
**Catalog #: APRab05688**

---

## Summary

<b>Production Name</b>	c-Fes (Phospho-Tyr713) Rabbit Polyclonal Antibody
<b>Description</b>	Rabbit Polyclonal Antibody
<b>Host</b>	Rabbit
<b>Application</b>	WB
<b>Reactivity</b>	Human,Mouse,Rat

## Performance

<b>Conjugation</b>	Unconjugated
<b>Modification</b>	Phospho Antibody
<b>Isotype</b>	IgG
<b>Clonality</b>	Polyclonal
<b>Form</b>	Liquid
<b>Storage</b>	Store at 4°C short term. Aliquot and store at -20°C long term. Avoid freeze/thaw cycles.
<b>Buffer</b>	Liquid in PBS containing 50% glycerol, 0.5% BSA and 0.02% New type preservative N.
<b>Purification</b>	Affinity purification

## Immunogen

<b>Gene Name</b>	FES FPS
<b>Alternative Names</b>	Tyrosine-protein kinase Fes/Fps (EC 2.7.10.2) (Feline sarcoma/Fujinami avian sarcoma oncogene homolog) (Proto-oncogene c-Fes) (Proto-oncogene c-Fps) (p93c-fes)
<b>Gene ID</b>	2242.0
<b>SwissProt ID</b>	P07332.

## Application

<b>Dilution Ratio</b>	WB 1:500-2000
<b>Molecular Weight</b>	90kD

## Background

---

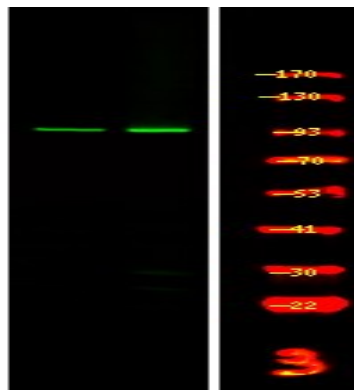
**Product Name: c-Fes (Phospho-Tyr713) Rabbit Polyclonal Antibody**  
**Catalog #: APRab05688**

---

catalytic activity:ATP + a [protein]-L-tyrosine = ADP + a [protein]-L-tyrosine phosphate.,similarity:Belongs to the protein kinase superfamily. Tyr protein kinase family.,similarity:Belongs to the protein kinase superfamily. Tyr protein kinase family. Fes/fps subfamily.,similarity:Contains 1 FCH domain.,similarity:Contains 1 protein kinase domain.,similarity:Contains 1 SH2 domain.,

## Research Area

## Image Data



Western Blot analysis of 1 HepG2 cell, 2 LPS 100ng/mL 30min treated ,using primary antibody at 1:1000 dilution.  
Secondary antibody was diluted at 1:10000

## Note

For research use only.