

Product Name: CDK5 (Phospho-Ser159) Rabbit Polyclonal Antibody
Catalog #: APRab05686

Summary

Production Name	CDK5 (Phospho-Ser159) Rabbit Polyclonal Antibody
Description	Rabbit Polyclonal Antibody
Host	Rabbit
Application	WB
Reactivity	Human,Mouse,Rat

Performance

Conjugation	Unconjugated
Modification	Phospho Antibody
Isotype	IgG
Clonality	Polyclonal
Form	Liquid
Storage	Store at 4°C short term. Aliquot and store at -20°C long term. Avoid freeze/thaw cycles.
Buffer	Liquid in PBS containing 50% glycerol, 0.5% BSA and 0.02% New type preservative N.
Purification	Affinity purification

Immunogen

Gene Name	CDK5 CDKN5 Cyclin-dependent kinase 5 (EC 2.7.11.22) (Cell division protein kinase 5)
Alternative Names	(Serine/threonine-protein kinase PSSALRE) (Tau protein kinase II catalytic subunit) (TPKII catalytic subunit)
Gene ID	1020.0
SwissProt ID	Q00535.

Application

Dilution Ratio	WB 1:500-2000
Molecular Weight	32kD

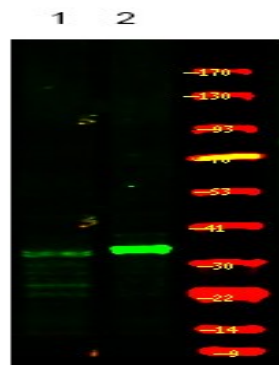
Product Name: CDK5 (Phospho-Ser159) Rabbit Polyclonal Antibody
Catalog #: APRab05686

Background

catalytic activity:ATP + a protein = ADP + a phosphoprotein.,function:Probably involved in the control of the cell cycle. Interacts with D1 and D3-type G1 cyclins. Can phosphorylate histone H1, tau, MAP2 and NF-H and NF-M. Also interacts with p35 which activates the kinase.,similarity:Belongs to the protein kinase superfamily. CMGC Ser/Thr protein kinase family. CDC2/CDKX subfamily.,similarity:Contains 1 protein kinase domain.,subcellular location:In axonal growth cone with extension to the peripheral lamellipodia.,subunit:Heterodimer of a catalytic subunit and a regulatory subunit (p35). Found in a trimolecular complex with CABLES1 and ABL1. Interacts with CABLES1 (By similarity). Interacts with AATK.,

Research Area

Image Data



Western Blot analysis of mouse lung tissue ,using primary antibody at 1:1000 dilution. Secondary antibody was diluted at 1:10000

Note

For research use only.