

**Product Name: VE-Cadherin (phospho Tyr731) Rabbit Polyclonal Antibody**  
**Catalog #: APRab05620**



---

## Summary

<b>Production Name</b>	VE-Cadherin (phospho Tyr731) Rabbit Polyclonal Antibody
<b>Description</b>	Rabbit Polyclonal Antibody
<b>Host</b>	Rabbit
<b>Application</b>	ELISA,IHC,WB
<b>Reactivity</b>	Human,Mouse

## Performance

<b>Conjugation</b>	Unconjugated
<b>Modification</b>	Phospho Antibody
<b>Isotype</b>	IgG
<b>Clonality</b>	Polyclonal
<b>Form</b>	Liquid
<b>Storage</b>	Store at 4°C short term. Aliquot and store at -20°C long term. Avoid freeze/thaw cycles.
<b>Buffer</b>	Liquid in PBS containing 50% glycerol, 0.5% BSA and 0.02% New type preservative N.
<b>Purification</b>	Affinity purification

## Immunogen

<b>Gene Name</b>	CDH5
<b>Alternative Names</b>	CDH5; Cadherin-5; 7B4 antigen; Vascular endothelial cadherin; VE-cadherin; CD antigen CD144
<b>Gene ID</b>	1003.0
<b>SwissProt ID</b>	P33151.The antiserum was produced against synthesized peptide derived from human VE-Cadherin around the phosphorylation site of Tyr731. AA range:697-746

## Application

<b>Dilution Ratio</b>	WB 1:500 - 1:2000. IHC 1:100 - 1:300. ELISA: 1:20000..
<b>Molecular Weight</b>	130kD

**Product Name: VE-Cadherin (phospho Tyr731) Rabbit Polyclonal Antibody**  
**Catalog #: APRab05620**



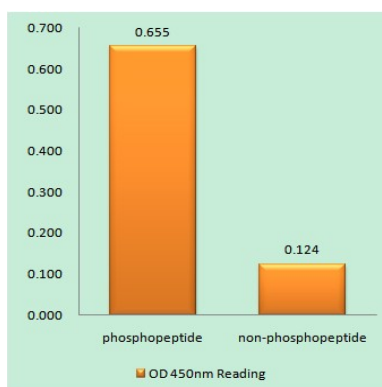
## Background

This gene encodes a classical cadherin of the cadherin superfamily. The encoded preproprotein is proteolytically processed to generate the mature glycoprotein. This calcium-dependent cell-cell adhesion molecule is comprised of five extracellular cadherin repeats, a transmembrane region and a highly conserved cytoplasmic tail. Functioning as a classical cadherin by imparting to cells the ability to adhere in a homophilic manner, this protein plays a role in endothelial adherens junction assembly and maintenance. This gene is located in a gene cluster in a region on the long arm of chromosome 16 that is involved in loss of heterozygosity events in breast and prostate cancer. [provided by RefSeq, Nov 2015],function:Cadherins are calcium dependent cell adhesion proteins.,function:Cadherins are calcium dependent cell adhesion proteins. They preferentially interact with themselves in a homophilic manner in connecting cells; cadherins may thus contribute to the sorting of heterogeneous cell types. This cadherin may play an important role in endothelial cell biology through control of the cohesion and organization of the intercellular junctions. It associates with alpha-catenin forming a link to the cytoskeleton.,similarity:Contains 5 cadherin domains.,subcellular location:Found at cell-cell boundaries and probably at cell-matrix boundaries.,tissue specificity:Endothelial tissues and brain.,

## Research Area

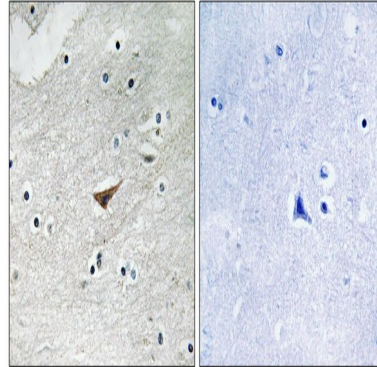
Cell adhesion molecules (CAMs);Leukocyte transendothelial migration;

## Image Data

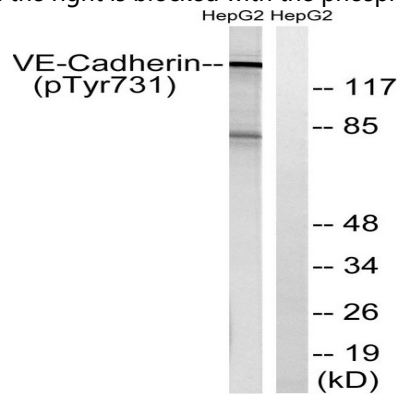


Enzyme-Linked Immunosorbent Assay (Phospho-ELISA) for Immunogen Phosphopeptide (Phospho-left) and Non-Phosphopeptide (Phospho-right) , using VE-Cadherin (Phospho-Tyr731) Antibody

**Product Name: VE-Cadherin (phospho Tyr731) Rabbit Polyclonal Antibody**  
**Catalog #: APRab05620**



Immunohistochemistry analysis of paraffin-embedded human brain, using VE-Cadherin (Phospho-Tyr731) Antibody. The picture on the right is blocked with the phospho peptide.



Western blot analysis of lysates from HepG2 cells treated with Na<sub>3</sub>VO<sub>4</sub> 0.3mM 40', using VE-Cadherin (Phospho-Tyr731) Antibody. The lane on the right is blocked with the phospho peptide.

## Note

For research use only.