

Product Name: TOB1 (phospho Ser164) Rabbit Polyclonal Antibody
Catalog #: APRab05566

Summary

Production Name	TOB1 (phospho Ser164) Rabbit Polyclonal Antibody
Description	Rabbit Polyclonal Antibody
Host	Rabbit
Application	IHC,WB,ELISA
Reactivity	Human,Mouse,Rat

Performance

Conjugation	Unconjugated
Modification	Phospho Antibody
Isotype	IgG
Clonality	Polyclonal
Form	Liquid
Storage	Store at 4°C short term. Aliquot and store at -20°C long term. Avoid freeze/thaw cycles.
Buffer	Liquid in PBS containing 50% glycerol, 0.5% BSA and 0.02% New type preservative N.
Purification	Affinity purification

Immunogen

Gene Name	TOB1
Alternative Names	TOB1; TOB; TROB1; Protein Tob1; Transducer of erbB-2 1
Gene ID	10140.0
SwissProt ID	P50616.The antiserum was produced against synthesized peptide derived from human TOB1 around the phosphorylation site of Ser164. AA range:130-179

Application

Dilution Ratio	WB 1:500 - 1:2000. IHC 1:100 - 1:300. ELISA: 1:5000..
Molecular Weight	40kD

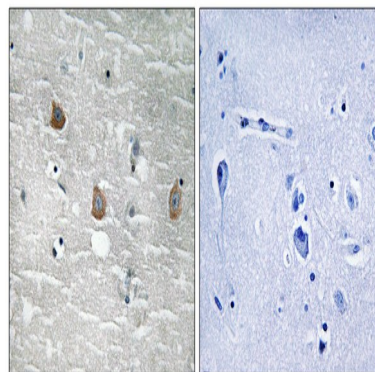
Product Name: TOB1 (phospho Ser164) Rabbit Polyclonal Antibody
Catalog #: APRab05566

Background

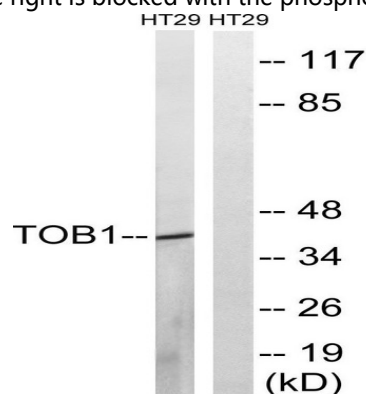
This gene encodes a member of the transducer of erbB-2 /B-cell translocation gene protein family. Members of this family are anti-proliferative factors that have the potential to regulate cell growth. The encoded protein may function as a tumor suppressor. Alternate splicing results in multiple transcript variants. [provided by RefSeq, Aug 2011],function:Anti-proliferative protein that interacts with the erbB-2 receptor tyrosine kinase. May physically and/or functionally interact with protein-tyrosine kinase receptors.,PTM:Phosphorylated on Ser and Thr residues.,similarity:Belongs to the BTG family.,subunit:Interacts with CNOT7.,tissue specificity:Ubiquitous.,

Research Area

Image Data

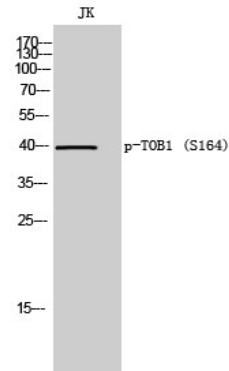


Immunohistochemistry analysis of paraffin-embedded human brain, using TOB1 (Phospho-Ser164) Antibody. The picture on the right is blocked with the phospho peptide.



Western blot analysis of lysates from HT29 cells treated with serum 20% 15', using TOB1 (Phospho-Ser164) Antibody. The lane on the right is blocked with the phospho peptide.

**Product Name: TOB1 (phospho Ser164) Rabbit
Polyclonal Antibody
Catalog #: APRab05566**



Western Blot analysis of JK cells using Phospho-TOB1 (S164) Polyclonal Antibody

Note

For research use only.