

Product Name: TIS11B (phospho Ser92) Rabbit Polyclonal Antibody
Catalog #: APRab05564

Summary

Production Name	TIS11B (phospho Ser92) Rabbit Polyclonal Antibody
Description	Rabbit Polyclonal Antibody
Host	Rabbit
Application	WB
Reactivity	Human,Mouse,Rat

Performance

Conjugation	Unconjugated
Modification	Phospho Antibody
Isotype	IgG
Clonality	Polyclonal
Form	Liquid
Storage	Store at 4°C short term. Aliquot and store at -20°C long term. Avoid freeze/thaw cycles.
Buffer	Liquid in PBS containing 50% glycerol, 0.5% BSA and 0.02% New type preservative N.
Purification	Affinity purification

Immunogen

Gene Name	ZFP36L1
Alternative Names	ZFP36L1; BERG36; BRF1; ERF1; RNF162B; TIS11B; Zinc finger protein 36; C3H1 type-like 1; Butyrate response factor 1; EGF-response factor 1; ERF-1; Protein TIS11B
Gene ID	677.0
SwissProt ID	Q07352.The antiserum was produced against synthesized peptide derived from human TISB around the phosphorylation site of Ser92. AA range:58-107

Application

Dilution Ratio	WB 1:500-2000; ELISA 2000-20000
Molecular Weight	36kD

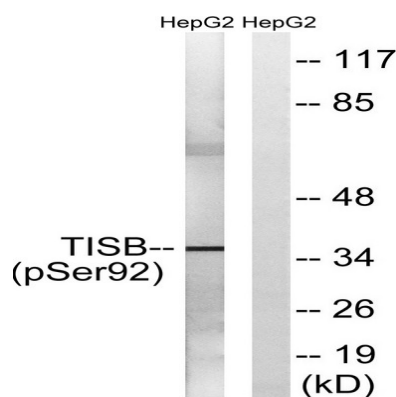
Product Name: TIS11B (phospho Ser92) Rabbit Polyclonal Antibody
Catalog #: APRab05564

Background

This gene is a member of the TIS11 family of early response genes, which are induced by various agonists such as the phorbol ester TPA and the polypeptide mitogen EGF. This gene is well conserved across species and has a promoter that contains motifs seen in other early-response genes. The encoded protein contains a distinguishing putative zinc finger domain with a repeating cys-his motif. This putative nuclear transcription factor most likely functions in regulating the response to growth factors. Alternatively spliced transcript variants encoding different isoforms have been found for this gene. [provided by RefSeq, Sep 2011],function:Probable regulatory protein involved in regulating the response to growth factors.,similarity:Contains 2 C3H1-type zinc fingers.,

Research Area

Image Data



Western blot analysis of lysates from HepG2 cells, using TISB (Phospho-Ser92) Antibody. The lane on the right is blocked with the phospho peptide.

Note

For research use only.