

**Product Name: TGFβ RIII (phospho Thr842) Rabbit Polyclonal Antibody**  
**Catalog #: APRab05550**



## Summary

<b>Production Name</b>	TGFβ RIII (phospho Thr842) Rabbit Polyclonal Antibody
<b>Description</b>	Rabbit Polyclonal Antibody
<b>Host</b>	Rabbit
<b>Application</b>	IHC,ELISA
<b>Reactivity</b>	Human,Mouse,Rat

## Performance

<b>Conjugation</b>	Unconjugated
<b>Modification</b>	Phospho Antibody
<b>Isotype</b>	IgG
<b>Clonality</b>	Polyclonal
<b>Form</b>	Liquid
<b>Storage</b>	Store at 4°C short term. Aliquot and store at -20°C long term. Avoid freeze/thaw cycles.
<b>Buffer</b>	Liquid in PBS containing 50% glycerol, 0.5% BSA and 0.02% New type preservative N.
<b>Purification</b>	Affinity purification

## Immunogen

<b>Gene Name</b>	TGFBR3 TGFBR3; Transforming growth factor beta receptor type 3; TGF-beta receptor type 3;
<b>Alternative Names</b>	TGFR-3; Betaglycan; Transforming growth factor beta receptor III; TGF-beta receptor type III
<b>Gene ID</b>	7049.0
<b>SwissProt ID</b>	Q03167.The antiserum was produced against synthesized peptide derived from human TGF beta Receptor III around the phosphorylation site of Thr842. AA range:801-850

## Application

<b>Dilution Ratio</b>	IHC 1:100-1:300 ELISA: 1:5000
<b>Molecular Weight</b>	

**Product Name: TGF $\beta$  RIII (phospho Thr842) Rabbit Polyclonal Antibody**  
**Catalog #: APRab05550**

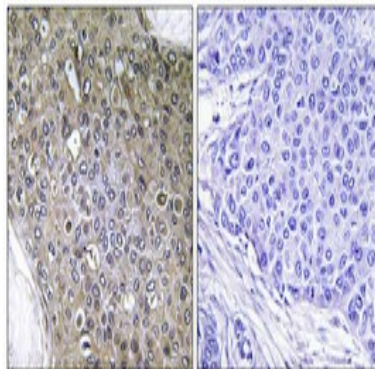


## Background

This locus encodes the transforming growth factor (TGF)-beta type III receptor. The encoded receptor is a membrane proteoglycan that often functions as a co-receptor with other TGF-beta receptor superfamily members. Ectodomain shedding produces soluble TGFBR3, which may inhibit TGF-beta signaling. Decreased expression of this receptor has been observed in various cancers. Alternatively spliced transcript variants encoding different isoforms have been identified for this gene.[provided by RefSeq, Sep 2010],function: Binds to TGF-beta. Could be involved in capturing and retaining TGF-beta for presentation to the signaling receptors.,PTM: Extensively modified by glycosaminoglycan groups (GAG),similarity: Contains 1 ZP domain.,subcellular location: Exists both as a membrane-bound form and as soluble form in serum and in the extracellular matrix.,subunit: Interacts with TCTEX1D4,.

## Research Area

## Image Data



Immunohistochemical analysis of paraffin-embedded Human breast cancer. Antibody was diluted at 1:100 (4 $^{\circ}$ ,overnight) . High-pressure and temperature Tris-EDTA,pH8.0 was used for antigen retrieval. Negative contrl (right) obtained from antibody was pre-absorbed by immunogen peptide.

## Note

For research use only.