

Product Name: Stat5 (phospho Ser726/731) Rabbit Polyclonal Antibody
Catalog #: APRab05484

Summary

| | |
|------------------------|-------------------------------------------------------|
| Production Name | Stat5 (phospho Ser726/731) Rabbit Polyclonal Antibody |
| Description | Rabbit Polyclonal Antibody |
| Host | Rabbit |
| Application | IHC,WB,ELISA |
| Reactivity | Human,Mouse,Rat |

Performance

| | |
|---------------------|------------------------------------------------------------------------------------------|
| Conjugation | Unconjugated |
| Modification | Phospho Antibody |
| Isotype | IgG |
| Clonality | Polyclonal |
| Form | Liquid |
| Storage | Store at 4°C short term. Aliquot and store at -20°C long term. Avoid freeze/thaw cycles. |
| Buffer | Liquid in PBS containing 50% glycerol, 0.5% BSA and 0.02% New type preservative N. |
| Purification | Affinity purification |

Immunogen

| | |
|--------------------------|------------------------------------------------------------------------------------------------------------------------------------------------------------|
| Gene Name | STAT5A/STAT5B |
| Alternative Names | STAT5A; STAT5; Signal transducer and activator of transcription 5A; STAT5B; Signal transducer and activator of transcription 5B |
| Gene ID | 6777.0 |
| SwissProt ID | P42229/P51692.The antiserum was produced against synthesized peptide derived from human STAT5B around the phosphorylation site of Ser731. AA range:697-746 |

Application

| | |
|-------------------------|--------------------------------------------------------|
| Dilution Ratio | WB 1:500 - 1:2000. IHC 1:100 - 1:300. ELISA: 1:40000.. |
| Molecular Weight | 90kD |

Product Name: Stat5 (phospho Ser726/731) Rabbit Polyclonal Antibody
Catalog #: APRab05484



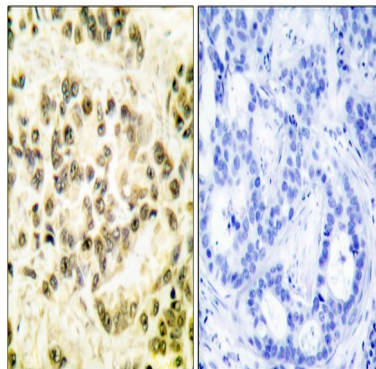
Background

The protein encoded by this gene is a member of the STAT family of transcription factors. In response to cytokines and growth factors, STAT family members are phosphorylated by the receptor associated kinases, and then form homo- or heterodimers that translocate to the cell nucleus where they act as transcription activators. This protein is activated by, and mediates the responses of many cell ligands, such as IL2, IL3, IL7 GM-CSF, erythropoietin, thrombopoietin, and different growth hormones. Activation of this protein in myeloma and lymphoma associated with a TEL/JAK2 gene fusion is independent of cell stimulus and has been shown to be essential for tumorigenesis. The mouse counterpart of this gene is found to induce the expression of BCL2L1/BCL-X(L), which suggests the antiapoptotic function of this gene in cells. Alternatively spliced transcript variants have been function: Carries out a dual function: signal transduction and activation of transcription. Binds to the GAS element and activates PRL-induced transcription., online information: STAT5 entry, PTM: Tyrosine phosphorylated in response to IL-2, IL-3, IL-7, IL-15, GM-CSF, growth hormone, prolactin, erythropoietin and thrombopoietin. Tyrosine phosphorylation is required for DNA-binding activity and dimerization. Serine phosphorylation is also required for maximal transcriptional activity., similarity: Belongs to the transcription factor STAT family., similarity: Contains 1 SH2 domain., subcellular location: Translocated into the nucleus in response to phosphorylation., subunit: Forms a homodimer or a heterodimer with a related family member. Binds NR3C1 (By similarity). Interacts with NCOA1 and SOCS7.,

Research Area

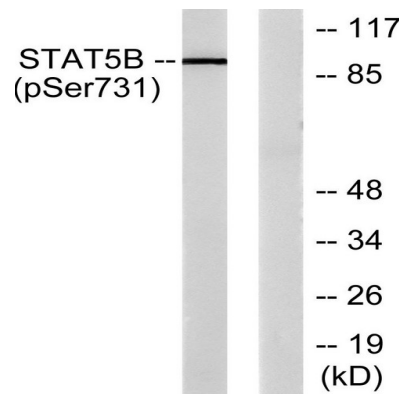
ErbB_HER; Jak_STAT; Pathways in cancer; Chronic myeloid leukemia; Acute myeloid leukemia;

Image Data

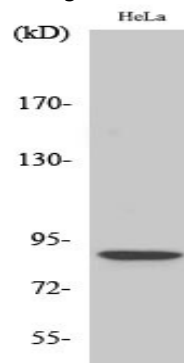


Immunohistochemistry analysis of paraffin-embedded human breast carcinoma, using STAT5B (Phospho-Ser731) Antibody. The picture on the right is blocked with the phospho peptide.

Product Name: Stat5 (phospho Ser726/731) Rabbit Polyclonal Antibody
Catalog #: APRab05484



Western blot analysis of lysates from RAW264.7 cells treated with EGF 200ng/ml 30', using STAT5B (Phospho-Ser731) Antibody. The lane on the right is blocked with the phospho peptide.



Western Blot analysis of various cells using Phospho-Stat5 (S726/731) Polyclonal Antibody diluted at 1: 500

Note

For research use only.