

Product Name: SPAK (phospho Ser325) Rabbit Polyclonal Antibody
Catalog #: APRab05460

Summary

Production Name	SPAK (phospho Ser325) Rabbit Polyclonal Antibody
Description	Rabbit Polyclonal Antibody
Host	Rabbit
Application	IHC,ELISA
Reactivity	Human,Mouse,Rat

Performance

Conjugation	Unconjugated
Modification	Phospho Antibody
Isotype	IgG
Clonality	Polyclonal
Form	Liquid
Storage	Store at 4°C short term. Aliquot and store at -20°C long term. Avoid freeze/thaw cycles.
Buffer	Liquid in PBS containing 50% glycerol, 0.5% BSA and 0.02% New type preservative N.
Purification	Affinity purification

Immunogen

Gene Name	STK39
Alternative Names	STK39; SPAK; STE20/SPS1-related proline-alanine-rich protein kinase; Ste-20-related kinase; DCHT; Serine/threonine-protein kinase 39
Gene ID	27347.0
SwissProt ID	Q9UEW8.The antiserum was produced against synthesized peptide derived from human STK39 around the phosphorylation site of Ser325. AA range:291-340

Application

Dilution Ratio	IHC 1:100 - 1:300. ELISA: 1:5000..
Molecular Weight	

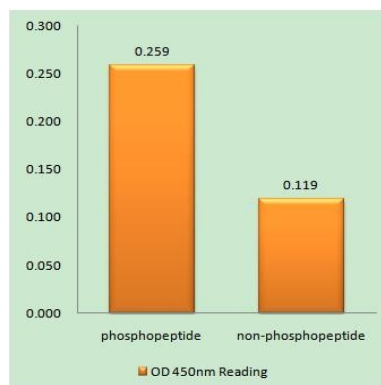
Product Name: SPAK (phospho Ser325) Rabbit Polyclonal Antibody
Catalog #: APRab05460

Background

This gene encodes a serine/threonine kinase that is thought to function in the cellular stress response pathway. The kinase is activated in response to hypotonic stress, leading to phosphorylation of several cation-chloride-coupled cotransporters. The catalytically active kinase specifically activates the p38 MAP kinase pathway, and its interaction with p38 decreases upon cellular stress, suggesting that this kinase may serve as an intermediate in the response to cellular stress. [provided by RefSeq, Jul 2008],catalytic activity:ATP + a protein = ADP + a phosphoprotein.,domain:PAPA box (proline-alanine repeats) may target the kinase to a specific subcellular location by facilitating interaction with intracellular proteins such as actin or actin-like proteins.,function:May act as a mediator of stress-activated signals.,similarity:Belongs to the protein kinase superfamily. STE Ser/Thr protein kinase family. STE20 subfamily.,similarity:Contains 1 protein kinase domain.,subcellular location:Nucleus when caspase-cleaved.,tissue specificity:Predominantly expressed in brain and pancreas followed by heart, lung, kidney, skeletal muscle, liver, placenta and testis.,

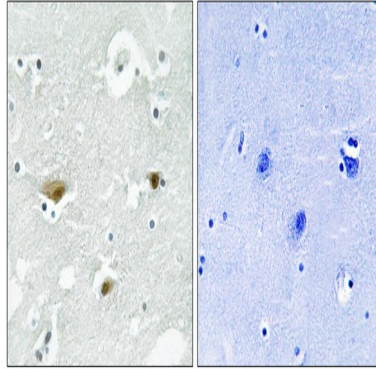
Research Area

Image Data



Enzyme-Linked Immunosorbent Assay (Phospho-ELISA) for Immunogen Phosphopeptide (Phospho-left) and Non-Phosphopeptide (Phospho-right) , using STK39 (Phospho-Ser325) Antibody

**Product Name: SPAK (phospho Ser325) Rabbit
Polyclonal Antibody
Catalog #: APRab05460**



Immunohistochemistry analysis of paraffin-embedded human brain, using STK39 (Phospho-Ser325) Antibody. The picture on the right is blocked with the phospho peptide.

Note

For research use only.