

Product Name: Sp1 (phospho Thr453) Rabbit Polyclonal Antibody
Catalog #: APRab05457

Summary

Production Name	Sp1 (phospho Thr453) Rabbit Polyclonal Antibody
Description	Rabbit Polyclonal Antibody
Host	Rabbit
Application	IF,IHC,WB,ELISA
Reactivity	Human,Mouse,Rat

Performance

Conjugation	Unconjugated
Modification	Phospho Antibody
Isotype	IgG
Clonality	Polyclonal
Form	Liquid
Storage	Store at 4°C short term. Aliquot and store at -20°C long term. Avoid freeze/thaw cycles.
Buffer	Liquid in PBS containing 50% glycerol, 0.5% BSA and 0.02% New type preservative N.
Purification	Affinity purification

Immunogen

Gene Name	SP1
Alternative Names	SP1; TSFP1; Transcription factor Sp1
Gene ID	6667.0
SwissProt ID	P08047.The antiserum was produced against synthesized peptide derived from human SP1 around the phosphorylation site of Thr453. AA range:421-470

Application

Dilution Ratio	WB 1:500 - 1:2000. IHC 1:100 - 1:300. IF 1:200 - 1:1000. ELISA: 1:5000. Not yet tested in other applications.
Molecular Weight	90kD

Product Name: Sp1 (phospho Thr453) Rabbit Polyclonal Antibody
Catalog #: APRab05457

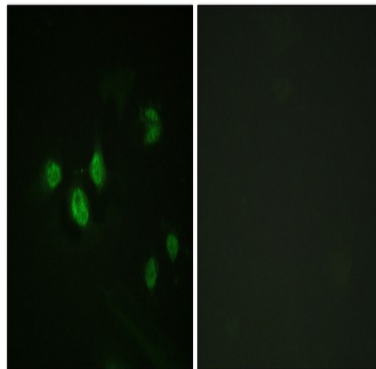
Background

The protein encoded by this gene is a zinc finger transcription factor that binds to GC-rich motifs of many promoters. The encoded protein is involved in many cellular processes, including cell differentiation, cell growth, apoptosis, immune responses, response to DNA damage, and chromatin remodeling. Post-translational modifications such as phosphorylation, acetylation, glycosylation, and proteolytic processing significantly affect the activity of this protein, which can be an activator or a repressor. Three transcript variants encoding different isoforms have been found for this gene. [provided by RefSeq, Nov 2014],function: Binds to GC box promoters elements and selectively activates mRNA synthesis from genes that contain functional recognition sites. Can interact with G/C-rich motifs from serotonin receptor promoter.,PTM: O-glycosylated; contains N-acetylglucosamine side chains.,similarity: Belongs to the Sp1 C2H2-type zinc-finger protein family.,similarity: Contains 3 C2H2-type zinc fingers.,subunit: Interacts with ATF7IP, ATF7IP2, POGZ, HCFC1, AATF and PHC2. Interacts with varicella-zoster virus IE62 protein and HIV-1 Vpr. Interacts with SV40 VP2/3 proteins. Interacts with SV40 major capsid protein VP1; this interaction leads to a cooperativity between the two proteins in DNA binding.,

Research Area

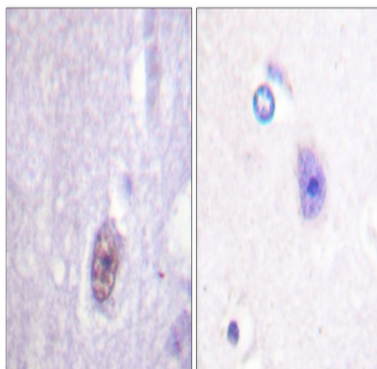
TGF-beta;Huntington's disease;

Image Data

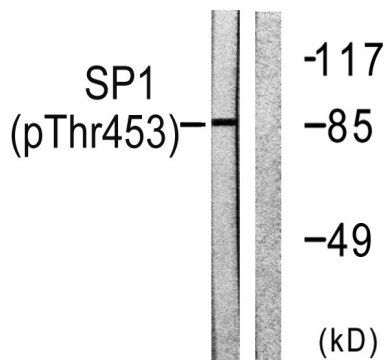


Immunofluorescence analysis of HeLa cells, using SP1 (Phospho-Thr453) Antibody. The picture on the right is blocked with the phospho peptide.

Product Name: Sp1 (phospho Thr453) Rabbit Polyclonal Antibody
Catalog #: APRab05457



Immunohistochemistry analysis of paraffin-embedded human brain, using SP1 (Phospho-Thr453) Antibody. The picture on the right is blocked with the phospho peptide.



Western blot analysis of lysates from A549 cells, using SP1 (Phospho-Thr453) Antibody. The lane on the right is blocked with the phospho peptide.

Note

For research use only.