

Product Name: SCG10 (phospho Ser73) Rabbit Polyclonal Antibody
Catalog #: APRab05402

Summary

Production Name	SCG10 (phospho Ser73) Rabbit Polyclonal Antibody
Description	Rabbit Polyclonal Antibody
Host	Rabbit
Application	IHC,ELISA
Reactivity	Human,Mouse,Rat

Performance

Conjugation	Unconjugated
Modification	Phospho Antibody
Isotype	IgG
Clonality	Polyclonal
Form	Liquid
Storage	Store at 4°C short term. Aliquot and store at -20°C long term. Avoid freeze/thaw cycles.
Buffer	Liquid in PBS containing 50% glycerol, 0.5% BSA and 0.02% New type preservative N.
Purification	Affinity purification

Immunogen

Gene Name	STMN2
Alternative Names	STMN2; SCG10; SCGN10; Stathmin-2; Superior cervical ganglion-10 protein; Protein SCG10
Gene ID	11075.0
SwissProt ID	Q93045.Synthesized phospho-peptide around the phosphorylation site of human SCG10 (phospho Ser73)

Application

Dilution Ratio	IHC 1:100-1:300 ELISA: 1:5000
Molecular Weight	

Product Name: SCG10 (phospho Ser73) Rabbit Polyclonal Antibody
Catalog #: APRab05402

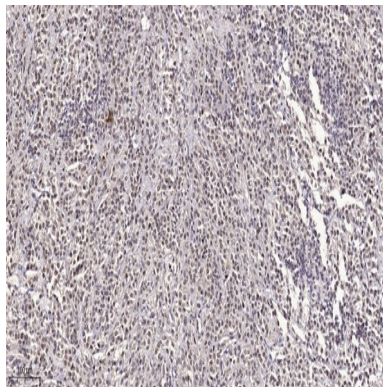
Background

This gene encodes a member of the stathmin family of phosphoproteins. Stathmin proteins function in microtubule dynamics and signal transduction. The encoded protein plays a regulatory role in neuronal growth and is also thought to be involved in osteogenesis. Reductions in the expression of this gene have been associated with Down's syndrome and Alzheimer's disease. Alternatively spliced transcript variants have been observed for this gene. A pseudogene of this gene is located on the long arm of chromosome 6. [provided by RefSeq, Nov 2010],function:May play a role in neuronal differentiation, and in modulating membrane interaction with the cytoskeleton during neurite outgrowth.,PTM:Sumoylated.,similarity:Belongs to the stathmin family.,subcellular location:Associated with punctate structures in the perinuclear cytoplasm, axons, and growth cones of developing neurons. SCG10 exists in both soluble and membrane-bound forms.,tissue specificity:Neuron specific.,

Research Area

Regulation of Microtubule Dynamics

Image Data



Immunohistochemical analysis of paraffin-embedded human small intestinal carcinoma tissue. 1,primary Antibody was diluted at 1:200 (4° overnight) . 2, Sodium citrate pH 6.0 was used for antigen retrieval (>98°C,20min) . 3,Secondary antibody was diluted at 1:200

Note

For research use only.