

Product Name: Rsk-1 (phospho Thr573) Rabbit Polyclonal Antibody
Catalog #: APRab05393

Summary

| | |
|------------------------|---|
| Production Name | Rsk-1 (phospho Thr573) Rabbit Polyclonal Antibody |
| Description | Rabbit Polyclonal Antibody |
| Host | Rabbit |
| Application | ELISA,IF,IHC,WB |
| Reactivity | Human,Mouse,Rat |

Performance

| | |
|---------------------|--|
| Conjugation | Unconjugated |
| Modification | Phospho Antibody |
| Isotype | IgG |
| Clonality | Polyclonal |
| Form | Liquid |
| Storage | Store at 4°C short term. Aliquot and store at -20°C long term. Avoid freeze/thaw cycles. |
| Buffer | Liquid in PBS containing 50% glycerol, 0.5% BSA and 0.02% New type preservative N. |
| Purification | Affinity purification |

Immunogen

| | |
|--------------------------|---|
| Gene Name | RPS6KA1 RPS6KA1; MAPKAPK1A; RSK1; Ribosomal protein S6 kinase alpha-1; S6K-alpha-1; 90 |
| Alternative Names | kDa ribosomal protein S6 kinase 1; p90-RSK 1; p90RSK1; p90S6K; MAP kinase-activated protein kinase 1a; MAPK-activated protein kinase 1a; MAPKAP kinase 1a; MAPKAP |
| Gene ID | 6195.0 |
| SwissProt ID | Q15418.The antiserum was produced against synthesized peptide derived from human p90 RSK around the phosphorylation site of Thr573. AA range:539-588 |

Application

| | |
|-----------------------|---|
| Dilution Ratio | WB 1:500 - 1:2000. IHC 1:100 - 1:300. IF 1:200 - 1:1000. ELISA: 1:5000. Not yet tested in |
|-----------------------|---|

Product Name: Rsk-1 (phospho Thr573) Rabbit Polyclonal Antibody
Catalog #: APRab05393

other applications.

Molecular Weight 95kD

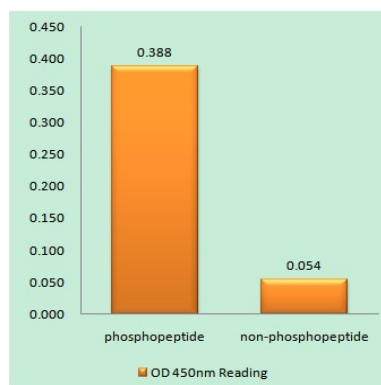
Background

ribosomal protein S6 kinase A1(RPS6KA1) Homo sapiens This gene encodes a member of the RSK (ribosomal S6 kinase) family of serine/threonine kinases. This kinase contains 2 nonidentical kinase catalytic domains and phosphorylates various substrates, including members of the mitogen-activated kinase (MAPK) signalling pathway. The activity of this protein has been implicated in controlling cell growth and differentiation. Alternate transcriptional splice variants, encoding different isoforms, have been characterized. [provided by RefSeq, Jul 2008],catalytic activity:ATP + a protein = ADP + a phosphoprotein.,caution:The sequence shown here is derived from an Ensembl automatic analysis pipeline and should be considered as preliminary data.,cofactor:Magnesium.,enzyme regulation:Activated by multiple phosphorylations on threonine and serine residues.,function:Serine/threonine kinase that may play a role in mediating the growth-factor and stress induced activation of the transcription factor CREB.,PTM:Autophosphorylated on Ser-380, as part of the activation process.,similarity:Belongs to the protein kinase superfamily.,similarity:Belongs to the protein kinase superfamily. AGC Ser/Thr protein kinase family. S6 kinase subfamily.,similarity:Contains 1 AGC-kinase C-terminal domain.,similarity:Contains 2 protein kinase domains.,subunit:Forms a complex with either ERK1 or ERK2 in quiescent cells. Transiently dissociates following mitogenic stimulation.,

Research Area

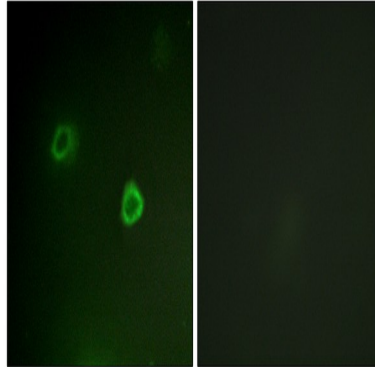
Regulates Angiogenesis; Insulin Receptor; B Cell Receptor; AMPK

Image Data

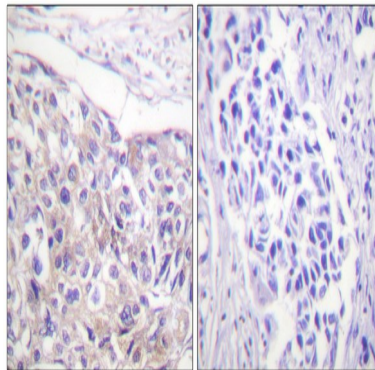


Enzyme-Linked Immunosorbent Assay (Phospho-ELISA) for Immunogen Phosphopeptide (Phospho-left) and Non-Phosphopeptide (Phospho-right) , using p90 RSK (Phospho-Thr573) Antibody

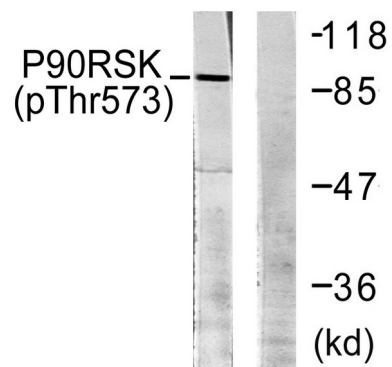
Product Name: Rsk-1 (phospho Thr573) Rabbit Polyclonal Antibody
Catalog #: APRab05393



Immunofluorescence analysis of COS7 cells, using p90 RSK (Phospho-Thr573) Antibody. The picture on the right is blocked with the phospho peptide.

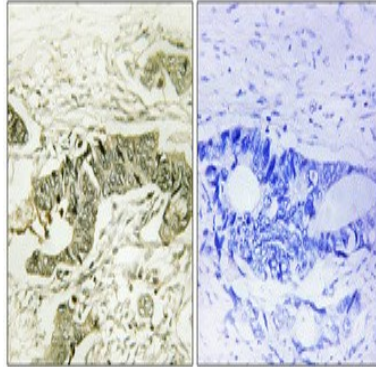


Immunohistochemistry analysis of paraffin-embedded human breast carcinoma, using p90 RSK (Phospho-Thr573) Antibody. The picture on the right is blocked with the phospho peptide.



Western blot analysis of lysates from 293 cells treated with UV 30', using p90 RSK (Phospho-Thr573) Antibody. The lane on the right is blocked with the phospho peptide.

**Product Name: Rsk-1 (phospho Thr573) Rabbit
Polyclonal Antibody
Catalog #: APRab05393**



Immunohistochemical analysis of paraffin-embedded Human colon cancer. Antibody was diluted at 1:100 (4°,overnight) . High-pressure and temperature Tris-EDTA,pH8.0 was used for antigen retrieval. Negative contrl (right) obtaned from antibody was pre-absorbed by immunogen peptide.

Note

For research use only.