

Product Name: ROS1 (phospho-Tyr2274) Rabbit Polyclonal Antibody
Catalog #: APRab05380

Summary

Production Name	ROS1 (phospho-Tyr2274) Rabbit Polyclonal Antibody
Description	Rabbit Polyclonal Antibody
Host	Rabbit
Application	WB,ELISA
Reactivity	Human,Rat,Mouse

Performance

Conjugation	Unconjugated
Modification	Phospho Antibody
Isotype	IgG
Clonality	Polyclonal
Form	Liquid
Storage	Store at 4°C short term. Aliquot and store at -20°C long term. Avoid freeze/thaw cycles.
Buffer	Liquid in PBS containing 50% glycerol, 0.5% BSA and 0.02% New type preservative N.
Purification	Affinity purification

Immunogen

Gene Name	ROS1 MCF3 ROS Proto-oncogene tyrosine-protein kinase ROS (EC 2.7.10.1) (Proto-oncogene c-Ros)
Alternative Names	(Proto-oncogene c-Ros-1) (Receptor tyrosine kinase c-ros oncogene 1) (c-Ros receptor tyrosine kinase)
Gene ID	6098.0
SwissProt ID	P08922.Synthesized phospho peptide around human ROS1 (Tyr2274)

Application

Dilution Ratio	WB 1:1000-2000
Molecular Weight	258kD

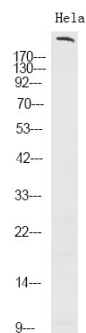
Product Name: ROS1 (phospho-Tyr2274) Rabbit Polyclonal Antibody
Catalog #: APRab05380

Background

This proto-oncogene, highly-expressed in a variety of tumor cell lines, belongs to the sevenless subfamily of tyrosine kinase insulin receptor genes. The protein encoded by this gene is a type I integral membrane protein with tyrosine kinase activity. The protein may function as a growth or differentiation factor receptor. [provided by RefSeq, Jul 2008],catalytic activity:ATP + a [protein]-L-tyrosine = ADP + a [protein]-L-tyrosine phosphate.,disease:A chromosomal aberration involving ROS1 is found in glioblastoma multiform (GBM). An homozygous deletion in chromosome 6q21 results in expression of a GOPC-ROS1 chimeric protein which has a constitutive receptor tyrosine kinase activity.,function:This is probably a cell growth or differentiation factor receptor with a tyrosine-protein kinase activity.,similarity:Belongs to the protein kinase superfamily. Tyr protein kinase family. Insulin receptor subfamily.,similarity:Contains 1 protein kinase domain.,similarity:Contains 9 fibronectin type-III domains.,

Research Area

Image Data



Western Blot analysis of HeLa using primary antibody at 1:1000 dilution 4°C, overnight. Secondary antibody was diluted at 1:10000 25°C, 1.5hours

Note

For research use only.