

**Product Name: Ron (phospho Ser1394) Rabbit Polyclonal Antibody**  
**Catalog #: APRab05379**

---

## Summary

<b>Production Name</b>	Ron (phospho Ser1394) Rabbit Polyclonal Antibody
<b>Description</b>	Rabbit Polyclonal Antibody
<b>Host</b>	Rabbit
<b>Application</b>	ELISA,WB,
<b>Reactivity</b>	Human,Mouse

## Performance

<b>Conjugation</b>	Unconjugated
<b>Modification</b>	Phospho Antibody
<b>Isotype</b>	IgG
<b>Clonality</b>	Polyclonal
<b>Form</b>	Liquid
<b>Storage</b>	Store at 4°C short term. Aliquot and store at -20°C long term. Avoid freeze/thaw cycles.
<b>Buffer</b>	Liquid in PBS containing 50% glycerol, 0.5% BSA and 0.02% New type preservative N.
<b>Purification</b>	Affinity purification

## Immunogen

<b>Gene Name</b>	MST1R
<b>Alternative Names</b>	MST1R; PTK8; RON; Macrophage-stimulating protein receptor; MSP receptor; CDw136; Protein-tyrosine kinase 8; p185-Ron; CD antigen CD136
<b>Gene ID</b>	4486.0
<b>SwissProt ID</b>	Q04912.The antiserum was produced against synthesized peptide derived from human CD136/RON around the phosphorylation site of Ser1394. AA range:1351-1400

## Application

<b>Dilution Ratio</b>	WB 1:500-2000
<b>Molecular Weight</b>	152kD

**Product Name: Ron (phospho Ser1394) Rabbit Polyclonal Antibody**  
**Catalog #: APRab05379**

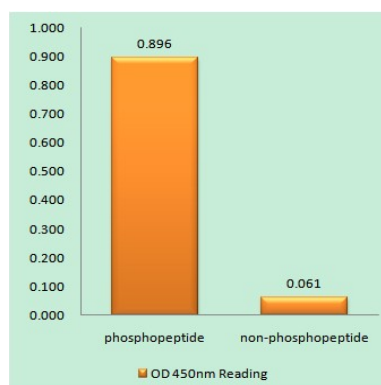
---

## Background

This gene encodes a cell surface receptor for macrophage-stimulating protein (MSP) with tyrosine kinase activity. The mature form of this protein is a heterodimer of disulfide-linked alpha and beta subunits, generated by proteolytic cleavage of a single-chain precursor. The beta subunit undergoes tyrosine phosphorylation upon stimulation by MSP. This protein is expressed on the ciliated epithelia of the mucociliary transport apparatus of the lung, and together with MSP, thought to be involved in host defense. Alternative splicing generates multiple transcript variants encoding different isoforms that may undergo similar proteolytic processing. [provided by RefSeq, Jan 2016],catalytic activity:ATP + a [protein]-L-tyrosine = ADP + a [protein]-L-tyrosine phosphate.,function:Receptor for macrophage stimulating protein (MSP). Has a tyrosine-protein kinase activity.,PTM:Phosphorylated in response to ligand binding.,PTM:Proteolytic processing yields the two subunits.,similarity:Belongs to the protein kinase superfamily. Tyr protein kinase family.,similarity:Contains 1 protein kinase domain.,similarity:Contains 1 Sema domain.,similarity:Contains 3 IPT/TIG domains.,subunit:Heterodimer formed of an alpha chain and a beta chain which are disulfide linked. Binds PLXNB1. Associates with and is negatively regulated by HYAL2.,tissue specificity:Keratinocytes and lung.,

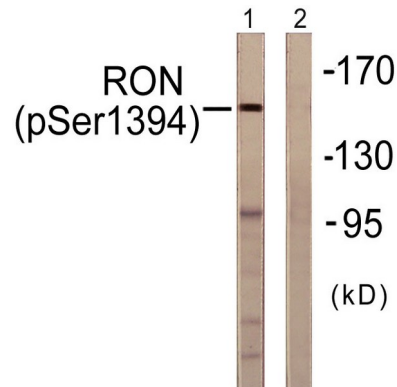
## Research Area

## Image Data

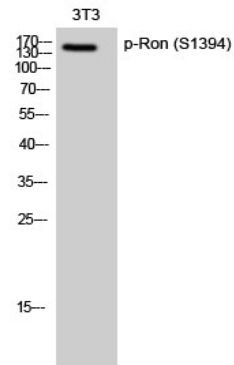


Enzyme-Linked Immunosorbent Assay (Phospho-ELISA) for Immunogen Phosphopeptide (Phospho-left) and Non-Phosphopeptide (Phospho-right) , using CD136/RON (Phospho-Ser1394) Antibody

**Product Name: Ron (phospho Ser1394) Rabbit Polyclonal Antibody**  
**Catalog #: APRab05379**



Western blot analysis of lysates from HeLa cells treated with TNF- $\alpha$  20ng/ml 2', using CD136/RON (Phospho-Ser1394) Antibody. The lane on the right is blocked with the phospho peptide.



Western Blot analysis of 3T3 cells using Phospho-Ron (S1394) Polyclonal Antibody diluted at 1: 500

## Note

For research use only.