

**Product Name: Rho GDI $\alpha$  (phospho Ser174) Rabbit Polyclonal Antibody**  
**Catalog #: APRab05369**

---

## Summary

<b>Production Name</b>	Rho GDI $\alpha$ (phospho Ser174) Rabbit Polyclonal Antibody
<b>Description</b>	Rabbit Polyclonal Antibody
<b>Host</b>	Rabbit
<b>Application</b>	ELISA,IHC,WB
<b>Reactivity</b>	Human,Mouse,Rat

## Performance

<b>Conjugation</b>	Unconjugated
<b>Modification</b>	Phospho Antibody
<b>Isotype</b>	IgG
<b>Clonality</b>	Polyclonal
<b>Form</b>	Liquid
<b>Storage</b>	Store at 4°C short term. Aliquot and store at -20°C long term. Avoid freeze/thaw cycles.
<b>Buffer</b>	Liquid in PBS containing 50% glycerol, 0.5% BSA and 0.02% New type preservative N.
<b>Purification</b>	Affinity purification

## Immunogen

<b>Gene Name</b>	ARHGDI A
<b>Alternative Names</b>	ARHGDI A; GDIA1; Rho GDP-dissociation inhibitor 1; Rho GDI 1; Rho-GDI alpha
<b>Gene ID</b>	396.0
<b>SwissProt ID</b>	P52565.The antiserum was produced against synthesized peptide derived from human ARHGDI A around the phosphorylation site of Ser174. AA range:140-189

## Application

<b>Dilution Ratio</b>	WB 1:500 - 1:2000. IHC 1:100 - 1:300. ELISA: 1:20000..
<b>Molecular Weight</b>	23kD

**Product Name: Rho GDI $\alpha$  (phospho Ser174) Rabbit Polyclonal Antibody**  
**Catalog #: APRab05369**



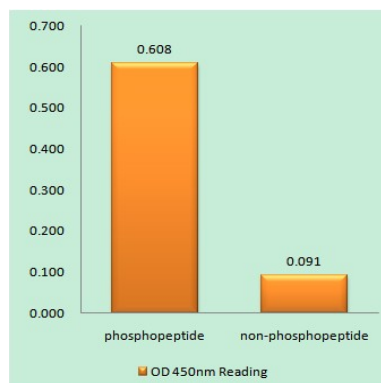
## Background

This gene encodes a protein that plays a key role in the regulation of signaling through Rho GTPases. The encoded protein inhibits the disassociation of Rho family members from GDP (guanine diphosphate), thereby maintaining these factors in an inactive state. Activity of this protein is important in a variety of cellular processes, and expression of this gene may be altered in tumors. Mutations in this gene have been found in individuals with nephrotic syndrome, type 8. Alternate splicing results in multiple transcript variants. [provided by RefSeq, Jul 2014],function:Regulates the GDP/GTP exchange reaction of the Rho proteins by inhibiting the dissociation of GDP from them, and the subsequent binding of GTP to them.,similarity:Belongs to the Rho GDI family.,subunit:Monomer.,

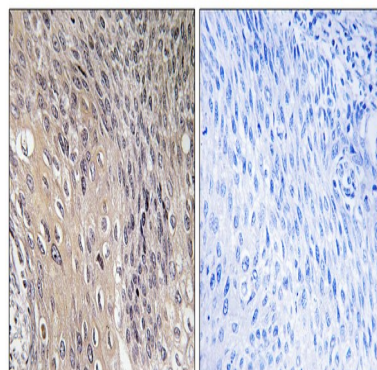
## Research Area

Neurotrophin;

## Image Data



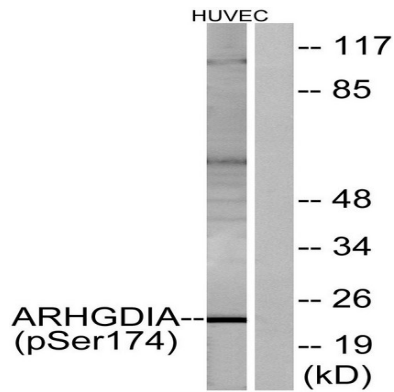
Enzyme-Linked Immunosorbent Assay (Phospho-ELISA) for Immunogen Phosphopeptide (Phospho-left) and Non-Phosphopeptide (Phospho-right) , using ARHGDI $\alpha$  (Phospho-Ser174) Antibody



Immunohistochemistry analysis of paraffin-embedded human cervix carcinoma, using ARHGDI $\alpha$  (Phospho-Ser174) Antibody. The picture on the right is blocked with the phospho peptide.

**Product Name: Rho GDI $\alpha$  (phospho Ser174) Rabbit Polyclonal Antibody**  
**Catalog #: APRab05369**

---



Western blot analysis of lysates from HUVEC cells treated with EGF 200ng/ml 30', using ARHGDI $\alpha$  (Phospho-Ser174) Antibody. The lane on the right is blocked with the phospho peptide.

### Note

For research use only.