

Product Name: Raf-1 (phospho Ser296) Rabbit Polyclonal Antibody
Catalog #: APRab05335

Summary

| | |
|------------------------|---|
| Production Name | Raf-1 (phospho Ser296) Rabbit Polyclonal Antibody |
| Description | Rabbit Polyclonal Antibody |
| Host | Rabbit |
| Application | ELISA,IHC,WB, |
| Reactivity | Human,Mouse,Rat |

Performance

| | |
|---------------------|--|
| Conjugation | Unconjugated |
| Modification | Phospho Antibody |
| Isotype | IgG |
| Clonality | Polyclonal |
| Form | Liquid |
| Storage | Store at 4°C short term. Aliquot and store at -20°C long term. Avoid freeze/thaw cycles. |
| Buffer | Liquid in PBS containing 50% glycerol, 0.5% BSA and 0.02% New type preservative N. |
| Purification | Affinity purification |

Immunogen

| | |
|--------------------------|--|
| Gene Name | RAF1 |
| Alternative Names | RAF1; RAF; RAF proto-oncogene serine/threonine-protein kinase; Proto-oncogene c-RAF; cRaf; Raf-1 |
| Gene ID | 5894.0 |
| SwissProt ID | P04049.The antiserum was produced against synthesized peptide derived from human C-RAF around the phosphorylation site of Ser296. AA range:271-320 |

Application

| | |
|-------------------------|---|
| Dilution Ratio | WB 1:500 - 1:2000 IHC 1:100 - 1:300. ELISA: 1:20000.. |
| Molecular Weight | 74kD |

**Product Name: Raf-1 (phospho Ser296) Rabbit
Polyclonal Antibody
Catalog #: APRab05335**

Background

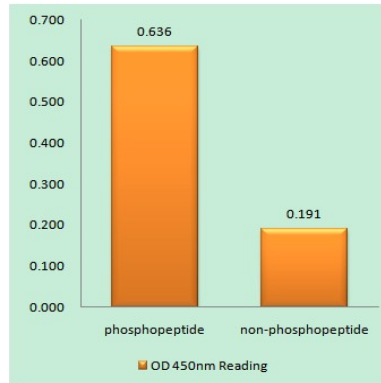
This gene is the cellular homolog of viral raf gene (v-raf). The encoded protein is a MAP kinase kinase kinase (MAP3K), which functions downstream of the Ras family of membrane associated GTPases to which it binds directly. Once activated, the cellular RAF1 protein can phosphorylate to activate the dual specificity protein kinases MEK1 and MEK2, which in turn phosphorylate to activate the serine/threonine specific protein kinases, ERK1 and ERK2. Activated ERKs are pleiotropic effectors of cell physiology and play an important role in the control of gene expression involved in the cell division cycle, apoptosis, cell differentiation and cell migration. Mutations in this gene are associated with Noonan syndrome 5 and LEOPARD syndrome 2. [provided by RefSeq, Jul 2008],catalytic activity:ATP + a protein = ADP + a phosphoprotein.,cofactor:binds 2 zinc ions per subunit.,disease:Defects in RAF1 are the cause of LEOPARD syndrome type 2 (LEOPARD syndrome-2) [MIM:611554]. LEOPARD syndrome is an autosomal dominant disorder allelic with Noonan syndrome. The acronym LEOPARD stands for lentiginosis, electrocardiographic conduction abnormalities, ocular hypertelorism, pulmonic stenosis, abnormalities of genitalia, retardation of growth, and deafness.,disease:Defects in RAF1 are the cause of Noonan syndrome type 5 (NS5) [MIM:611553]. Noonan syndrome (NS) is a disorder characterized by dysmorphic facial features, short stature, hypertelorism, cardiac anomalies, deafness, motor delay, and a bleeding diathesis. It is a genetically heterogeneous and relatively common syndrome, with an estimated incidence of 1 in 1000-2500 live births.,function:Involved in the transduction of mitogenic signals from the cell membrane to the nucleus. Part of the Ras-dependent signaling pathway from receptors to the nucleus. Protects cells from apoptosis mediated by STK3.,PTM:Phosphorylated upon DNA damage, probably by ATM or ATR. Phosphorylation at Thr-269 increases its kinase activity.,similarity:Belongs to the protein kinase superfamily. TKL Ser/Thr protein kinase family. RAF subfamily.,similarity:Contains 1 phorbol-ester/DAG-type zinc finger.,similarity:Contains 1 protein kinase domain.,similarity:Contains 1 RBD (Ras-binding) domain.,subunit:Interacts with Ras proteins; the interaction is antagonized by RIN1. Weakly interacts with RIT1 (By similarity). Interacts with STK3; the interaction inhibits its pro-apoptotic activity. Interacts with YWHAZ (unphosphorylated at 'Thr-232').,tissue specificity:In skeletal muscle, isoform 1 is more abundant than isoform 2.,

Research Area

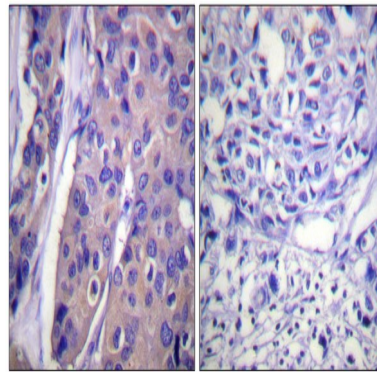
MAPK_ERK_Growth;MAPK_G_Protein;ErbB_HER;Chemokine;Vascular smooth muscle contraction;VEGF;Focal adhesion;Gap junction;Natural killer cell mediated cytotoxicity;T_Cell_Receptor;B_Cell_Antigen;Fc epsilon RI;Fc gamma R-mediated phagocytosis;Long-term potentiation;Neurotrophin;Long-term depression;Regulates Actin and Cytoskeleton;Insulin_Receptor;GnRH;Progesterone-mediated oocyte maturation;Melanogenesis;Pathways in cancer;Colorectal cancer;Renal cell carcinoma;Pancreatic cancer;Endometrial cancer;Glioma;Prostate cancer;Melanoma;Bladder cancer;Chronic myeloid leukemia;Acute myeloid leukemia;Non-small cell lung cancer;

Image Data

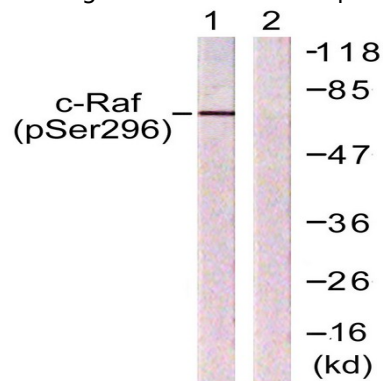
Product Name: Raf-1 (phospho Ser296) Rabbit Polyclonal Antibody
Catalog #: APRab05335



Enzyme-Linked Immunosorbent Assay (Phospho-ELISA) for Immunogen Phosphopeptide (Phospho-left) and Non-Phosphopeptide (Phospho-right) , using C-RAF (Phospho-Ser296) Antibody

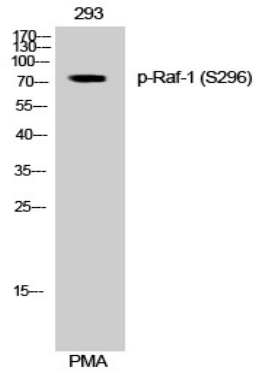


Immunohistochemistry analysis of paraffin-embedded human breast carcinoma, using C-RAF (Phospho-Ser296) Antibody. The picture on the right is blocked with the phospho peptide.



Western blot analysis of lysates from 293 cells treated with PMA 125ng/ml 30 ' , using C-RAF (Phospho-Ser296) Antibody. The lane on the right is blocked with the phospho peptide.

**Product Name: Raf-1 (phospho Ser296) Rabbit
Polyclonal Antibody
Catalog #: APRab05335**



Western Blot analysis of 293 cells using Phospho-Raf-1 (S296) Polyclonal Antibody diluted at 1: 1000

Note

For research use only.