

Product Name: Rabphilin-3A (phospho Ser237) Rabbit Polyclonal Antibody
Catalog #: APRab05323

Summary

Production Name	Rabphilin-3A (phospho Ser237) Rabbit Polyclonal Antibody
Description	Rabbit Polyclonal Antibody
Host	Rabbit
Application	ELISA,IF,IHC,WB
Reactivity	Human,Mouse,Rat

Performance

Conjugation	Unconjugated
Modification	Phospho Antibody
Isotype	IgG
Clonality	Polyclonal
Form	Liquid
Storage	Store at 4°C short term. Aliquot and store at -20°C long term. Avoid freeze/thaw cycles.
Buffer	Liquid in PBS containing 50% glycerol, 0.5% BSA and 0.02% New type preservative N.
Purification	Affinity purification

Immunogen

Gene Name	RPH3A
Alternative Names	RPH3A; KIAA0985; Rabphilin-3A; Exophilin-1
Gene ID	22895.0
SwissProt ID	Q9Y2J0.The antiserum was produced against synthesized peptide derived from human Rabphilin 3A around the phosphorylation site of Ser237. AA range:203-252

Application

Dilution Ratio	WB 1:500 - 1:2000. IF 1:200 - 1:1000. ELISA: 1:10000. IHC 1:100 - 1:300.
Molecular Weight	75kD

Product Name: Rabphilin-3A (phospho Ser237) Rabbit Polyclonal Antibody
Catalog #: APRab05323

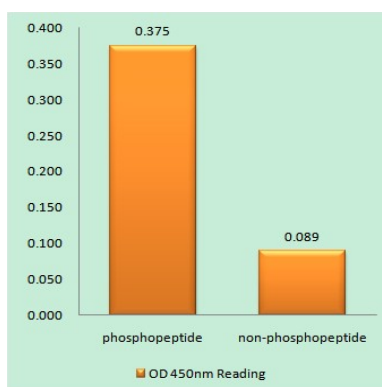


Background

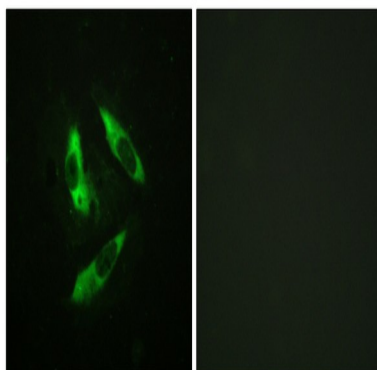
Exocytosis of neurotransmitters and hormones is fundamental to synaptic neurotransmission and cell-cell communication. RAB3A (MIM 179390) is a small G protein that is thought to act at late stages of exocytosis, and RPH3A is a RAB3A effector (Lin et al., 2007 [PubMed 17149709]).[supplied by OMIM, Jul 2008],function:Protein transport. Probably involved with Ras-related protein Rab-3A in synaptic vesicle traffic and/or synaptic vesicle fusion. Could play a role in neurotransmitter release by regulating membrane flow in the nerve terminal.,similarity:Contains 1 FYVE-type zinc finger.,similarity:Contains 1 RabBD (Rab-binding) domain.,similarity:Contains 2 C2 domains.,

Research Area

Image Data

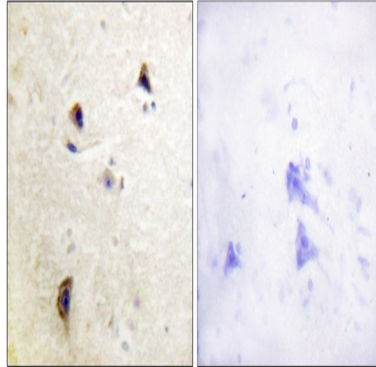


Enzyme-Linked Immunosorbent Assay (Phospho-ELISA) for Immunogen Phosphopeptide (Phospho-left) and Non-Phosphopeptide (Phospho-right) , using Rabphilin 3A (Phospho-Ser237) Antibody

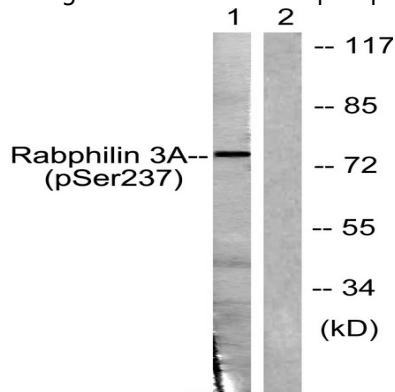


Immunofluorescence analysis of HeLa cells, using Rabphilin 3A (Phospho-Ser237) Antibody. The picture on the right is blocked with the phospho peptide.

Product Name: Rabphilin-3A (phospho Ser237) Rabbit Polyclonal Antibody
Catalog #: APRab05323



Immunohistochemistry analysis of paraffin-embedded human brain, using Rabphilin 3A (Phospho-Ser237) Antibody. The picture on the right is blocked with the phospho peptide.



Western blot analysis of lysates from RAW264.7 cells treated with Calyculin 100nM 15', using Rabphilin 3A (Phospho-Ser237) Antibody. The lane on the right is blocked with the phospho peptide.

Note

For research use only.