

**Product Name: PLC  $\gamma$ 2 (phospho Tyr753) Rabbit Polyclonal Antibody**  
**Catalog #: APRab05288**

---

## Summary

<b>Production Name</b>	PLC $\gamma$ 2 (phospho Tyr753) Rabbit Polyclonal Antibody
<b>Description</b>	Rabbit Polyclonal Antibody
<b>Host</b>	Rabbit
<b>Application</b>	IHC,WB,
<b>Reactivity</b>	Human,Mouse,Rat

## Performance

<b>Conjugation</b>	Unconjugated
<b>Modification</b>	Phospho Antibody
<b>Isotype</b>	IgG
<b>Clonality</b>	Polyclonal
<b>Form</b>	Liquid
<b>Storage</b>	Store at 4°C short term. Aliquot and store at -20°C long term. Avoid freeze/thaw cycles.
<b>Buffer</b>	Liquid in PBS containing 50% glycerol, 0.5% BSA and 0.02% New type preservative N.
<b>Purification</b>	Affinity purification

## Immunogen

<b>Gene Name</b>	PLCG2 PLCG2; 1-phosphatidylinositol 4; 5-bisphosphate phosphodiesterase gamma-2;
<b>Alternative Names</b>	Phosphoinositide phospholipase C-gamma-2; Phospholipase C-IV; PLC-IV; Phospholipase C-gamma-2; PLC-gamma-2
<b>Gene ID</b>	5336.0
<b>SwissProt ID</b>	P16885.The antiserum was produced against synthesized peptide derived from human PLCG2 around the phosphorylation site of Tyr753. AA range:721-770

## Application

<b>Dilution Ratio</b>	WB 1:500 - 1:2000. IHC 1:100 - 1:300. ELISA: 1:5000..
<b>Molecular Weight</b>	148kD

---

**Product Name: PLC  $\gamma$ 2 (phospho Tyr753) Rabbit Polyclonal Antibody**  
**Catalog #: APRab05288**

---

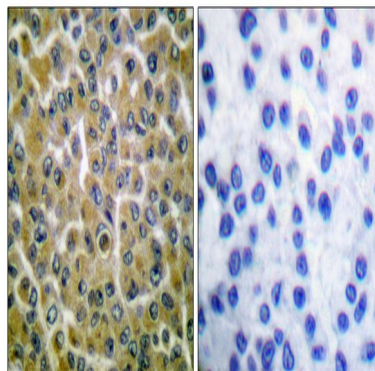
## Background

The protein encoded by this gene is a transmembrane signaling enzyme that catalyzes the conversion of 1-phosphatidyl-1D-myo-inositol 4,5-bisphosphate to 1D-myo-inositol 1,4,5-trisphosphate (IP3) and diacylglycerol (DAG) using calcium as a cofactor. IP3 and DAG are second messenger molecules important for transmitting signals from growth factor receptors and immune system receptors across the cell membrane. Mutations in this gene have been found in autoinflammation, antibody deficiency, and immune dysregulation syndrome and familial cold autoinflammatory syndrome 3. [provided by RefSeq, Mar 2014],catalytic activity:1-phosphatidyl-1D-myo-inositol 4,5-bisphosphate + H(2)O = 1D-myo-inositol 1,4,5-trisphosphate + diacylglycerol.,cofactor:Calcium.,function:The production of the second messenger molecules diacylglycerol (DAG) and inositol 1,4,5-trisphosphate (IP3) is mediated by activated phosphatidylinositol-specific phospholipase C enzymes. It is a crucial enzyme in transmembrane signaling.,PTM:Phosphorylated on tyrosine residues; upon ligand-induced activation of a variety of growth factor receptors and immune system receptors. Increases phospholipase activity.,similarity:Contains 1 C2 domain.,similarity:Contains 1 PH domain.,similarity:Contains 1 PI-PLC X-box domain.,similarity:Contains 1 PI-PLC Y-box domain.,similarity:Contains 1 SH3 domain.,similarity:Contains 2 SH2 domains.,

## Research Area

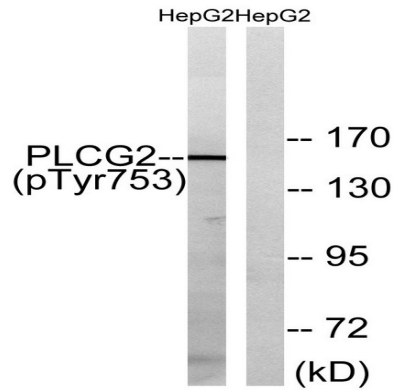
Inositol phosphate metabolism;ErbB\_HER;Calcium;Phosphatidylinositol signaling system;VEGF;Natural killer cell mediated cytotoxicity;B\_Cell\_Antigen;Fc epsilon RI;Fc gamma R-mediated phagocytosis;Leukocyte transendothelial migration;Neurotrophin;Vibrio cholerae infection;Epithelial cell signaling in Helicobacter pylori infection;Pathways in cancer;Glioma;Non-small cell lung cancer;

## Image Data

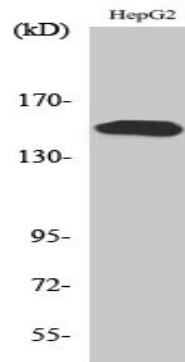


Immunohistochemistry analysis of paraffin-embedded human breast carcinoma, using PLCG2 (Phospho-Tyr753) Antibody.  
The picture on the right is blocked with the phospho peptide.

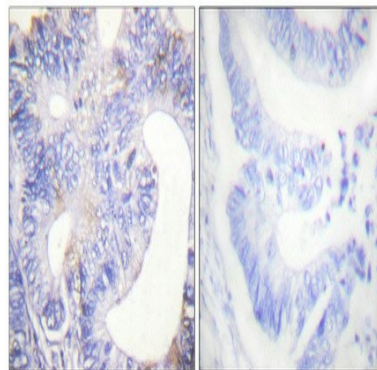
**Product Name: PLC  $\gamma$ 2 (phospho Tyr753) Rabbit Polyclonal Antibody**  
**Catalog #: APRab05288**



Western blot analysis of lysates from HepG2 cells treated with Na<sub>3</sub>VO<sub>4</sub> 0.3mM 40', using PLCG2 (Phospho-Tyr753) Antibody. The lane on the right is blocked with the phospho peptide.



Western Blot analysis of various cells using Phospho-PLC  $\gamma$ 2 (Y753) Polyclonal Antibody



Immunohistochemical analysis of paraffin-embedded Human colon cancer. Antibody was diluted at 1:100 (4<sup>o</sup>,overnight) . High-pressure and temperature Tris-EDTA,pH8.0 was used for antigen retrieval. Negative contrl (right) obtained from antibody was pre-absorbed by immunogen peptide.

## Note

For research use only.