

Product Name: PLC γ 2 (phospho Tyr1217) Rabbit Polyclonal Antibody
Catalog #: APRab05287

Summary

Production Name	PLC γ 2 (phospho Tyr1217) Rabbit Polyclonal Antibody
Description	Rabbit Polyclonal Antibody
Host	Rabbit
Application	IF,IHC,WB,ELISA
Reactivity	Human,Mouse,Rat

Performance

Conjugation	Unconjugated
Modification	Phospho Antibody
Isotype	IgG
Clonality	Polyclonal
Form	Liquid
Storage	Store at 4°C short term. Aliquot and store at -20°C long term. Avoid freeze/thaw cycles.
Buffer	Liquid in PBS containing 50% glycerol, 0.5% BSA and 0.02% New type preservative N.
Purification	Affinity purification

Immunogen

Gene Name	PLCG2 PLCG2; 1-phosphatidylinositol 4; 5-bisphosphate phosphodiesterase gamma-2;
Alternative Names	Phosphoinositide phospholipase C-gamma-2; Phospholipase C-IV; PLC-IV; Phospholipase C-gamma-2; PLC-gamma-2
Gene ID	5336.0
SwissProt ID	P16885.The antiserum was produced against synthesized peptide derived from human PLCG2 around the phosphorylation site of Tyr1217. AA range:1186-1235

Application

Dilution Ratio	WB 1:500 - 1:2000. IHC 1:100 - 1:300. IF 1:200 - 1:1000. ELISA: 1:5000. Not yet tested in
-----------------------	---

Product Name: PLC γ 2 (phospho Tyr1217) Rabbit Polyclonal Antibody
Catalog #: APRab05287

other applications.

Molecular Weight 148kD

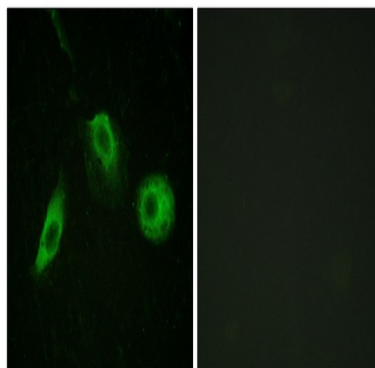
Background

The protein encoded by this gene is a transmembrane signaling enzyme that catalyzes the conversion of 1-phosphatidyl-1D-myo-inositol 4,5-bisphosphate to 1D-myo-inositol 1,4,5-trisphosphate (IP3) and diacylglycerol (DAG) using calcium as a cofactor. IP3 and DAG are second messenger molecules important for transmitting signals from growth factor receptors and immune system receptors across the cell membrane. Mutations in this gene have been found in autoinflammation, antibody deficiency, and immune dysregulation syndrome and familial cold autoinflammatory syndrome 3. [provided by RefSeq, Mar 2014],catalytic activity:1-phosphatidyl-1D-myo-inositol 4,5-bisphosphate + H(2)O = 1D-myo-inositol 1,4,5-trisphosphate + diacylglycerol.,cofactor:Calcium.,function:The production of the second messenger molecules diacylglycerol (DAG) and inositol 1,4,5-trisphosphate (IP3) is mediated by activated phosphatidylinositol-specific phospholipase C enzymes. It is a crucial enzyme in transmembrane signaling.,PTM:Phosphorylated on tyrosine residues; upon ligand-induced activation of a variety of growth factor receptors and immune system receptors. Increases phospholipase activity.,similarity:Contains 1 C2 domain.,similarity:Contains 1 PH domain.,similarity:Contains 1 PI-PLC X-box domain.,similarity:Contains 1 PI-PLC Y-box domain.,similarity:Contains 1 SH3 domain.,similarity:Contains 2 SH2 domains.,

Research Area

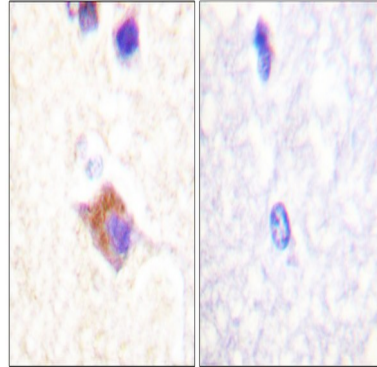
Inositol phosphate metabolism;ErbB_HER;Calcium;Phosphatidylinositol signaling system;VEGF;Natural killer cell mediated cytotoxicity;B_Cell_Antigen;Fc epsilon RI;Fc gamma R-mediated phagocytosis;Leukocyte transendothelial migration;Neurotrophin;Vibrio cholerae infection;Epithelial cell signaling in Helicobacter pylori infection;Pathways in cancer;Glioma;Non-small cell lung cancer;

Image Data

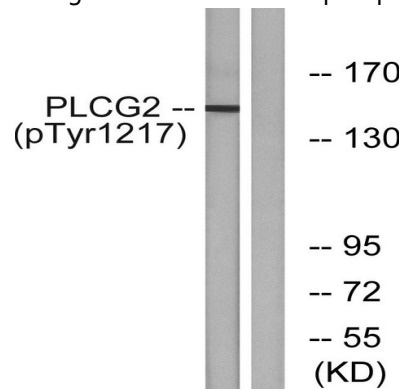


Immunofluorescence analysis of HeLa cells, using PLCG2 (Phospho-Tyr1217) Antibody. The picture on the right is blocked with the phospho peptide.

Product Name: PLC γ 2 (phospho Tyr1217) Rabbit Polyclonal Antibody
Catalog #: APRab05287



Immunohistochemistry analysis of paraffin-embedded human brain, using PLCG2 (Phospho-Tyr1217) Antibody. The picture on the right is blocked with the phospho peptide.



Western blot analysis of lysates from Jurkat cells treated with UV 15', using PLCG2 (Phospho-Tyr1217) Antibody. The lane on the right is blocked with the phospho peptide.

Note

For research use only.