

Product Name: PKD1/2/3 (phospho Ser738/S742) Rabbit Polyclonal Antibody
Catalog #: APRab05274

Summary

Production Name	PKD1/2/3 (phospho Ser738/S742) Rabbit Polyclonal Antibody
Description	Rabbit Polyclonal Antibody
Host	Rabbit
Application	ELISA,IHC,WB,
Reactivity	Human,Mouse,Rat

Performance

Conjugation	Unconjugated
Modification	Phospho Antibody
Isotype	IgG
Clonality	Polyclonal
Form	Liquid
Storage	Store at 4°C short term. Aliquot and store at -20°C long term. Avoid freeze/thaw cycles.
Buffer	Liquid in PBS containing 50% glycerol, 0.5% BSA and 0.02% New type preservative N.
Purification	Affinity purification

Immunogen

Gene Name	KPCD1/KPCD2/KPCD3 PRKD1; PKD; PKD1; PRKCM; Serine/threonine-protein kinase D1; Protein kinase C mu type; Protein kinase D; nPKC-D1; nPKC-mu; PRKD2; PKD2; HSPC187; Serine/threonine-protein kinase D2; nPKC-D2; PRKD3; EPK2; PRKCN; Serine/threonine-protein kinas
Alternative Names	
Gene ID	5587/25865/23683 Q15139/Q9BZL6/O94806.The antiserum was produced against synthesized peptide
SwissProt ID	derived from human PKD1/2/3/PKC mu around the phosphorylation site of Ser738 and Ser742. AA range:706-755

Application

Dilution Ratio	WB 1:500 - 1:2000 IHC 1:100 - 1:300. ELISA: 1:5000..
-----------------------	--

Product Name: PKD1/2/3 (phospho Ser738/S742) Rabbit Polyclonal Antibody
Catalog #: APRab05274

Molecular Weight 101kD

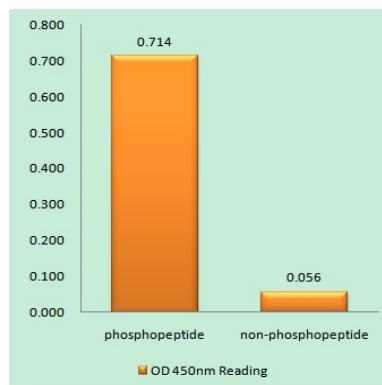
Background

PRKD1 is a serine/threonine kinase that regulates a variety of cellular functions, including membrane receptor signaling, transport at the Golgi, protection from oxidative stress at the mitochondria, gene transcription, and regulation of cell shape, motility, and adhesion (summary by Eiseler et al., 2009 [PubMed 19329994]).[supplied by OMIM, Nov 2010],catalytic activity:ATP + a protein = ADP + a phosphoprotein.,enzyme regulation:Activated by diacylglycerol and phorbol esters.,function:Calcium-independent, phospholipid-dependent, serine- and threonine-specific kinase involved in resistance to oxidative stress.,PTM:Phosphorylation of Ser-738 and/or Ser-742 in activated PKD is mediated by transphosphorylation (By similarity). Phosphorylation of Tyr-463 mediated by the Src/Abl pathway in response to oxidative stress activates the kinase.,similarity:Belongs to the protein kinase superfamily.,similarity:Belongs to the protein kinase superfamily. CAMK Ser/Thr protein kinase family. PKD subfamily.,similarity:Contains 1 PH domain.,similarity:Contains 1 protein kinase domain.,similarity:Contains 2 phorbol-ester/DAG-type zinc fingers.,subunit:Interacts (via N-terminus) with ADAP1/CENTA1. Interacts with Src.,

Research Area

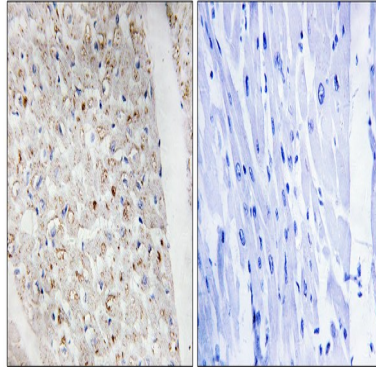
Regulation_Microtubule; Regulation of Actin Dynamics; Stem cell pathway; Insulin Receptor; B Cell Receptor; AMPK

Image Data

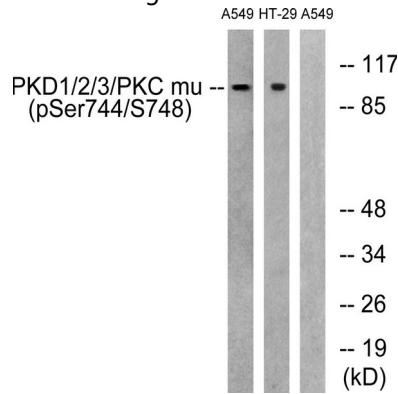


Enzyme-Linked Immunosorbent Assay (Phospho-ELISA) for Immunogen Phosphopeptide (Phospho-left) and Non-Phosphopeptide (Phospho-right) , using PKD1/2/3/PKC mu (Phospho-Ser738+Ser742) Antibody

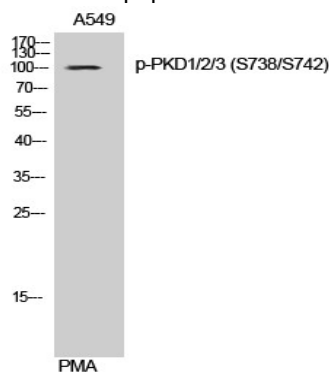
Product Name: PKD1/2/3 (phospho Ser738/S742) Rabbit Polyclonal Antibody
Catalog #: APRab05274



Immunohistochemistry analysis of paraffin-embedded human heart, using PKD1/2/3/PKC mu (Phospho-Ser738+Ser742) Antibody. The picture on the right is blocked with the phospho peptide.



Western blot analysis of lysates from A549 cells treated with PMA 125ng/ml 30 ' and HT29 cells treated with serum 20% 15 ', using PKD1/2/3/PKC mu (Phospho-Ser738+Ser742) Antibody. The lane on the right is blocked with the phospho peptide.



Western Blot analysis of A549 cells using Phospho-PKD1/2/3 (S738/S742) Polyclonal Antibody

Note

For research use only.