

Product Name: PKC δ (phospho Tyr52) Rabbit Polyclonal Antibody
Catalog #: APRab05261

Summary

Production Name	PKC δ (phospho Tyr52) Rabbit Polyclonal Antibody
Description	Rabbit Polyclonal Antibody
Host	Rabbit
Application	ELISA,IF,IHC,WB
Reactivity	Human,Mouse,Rat

Performance

Conjugation	Unconjugated
Modification	Phospho Antibody
Isotype	IgG
Clonality	Polyclonal
Form	Liquid
Storage	Store at 4°C short term. Aliquot and store at -20°C long term. Avoid freeze/thaw cycles.
Buffer	Liquid in PBS containing 50% glycerol, 0.5% BSA and 0.02% New type preservative N.
Purification	Affinity purification

Immunogen

Gene Name	PRKCD
Alternative Names	PRKCD; Protein kinase C delta type; Tyrosine-protein kinase PRKCD; nPKC-delta
Gene ID	5580.0
SwissProt ID	Q05655.The antiserum was produced against synthesized peptide derived from human PKC delta around the phosphorylation site of Tyr52. AA range:18-67

Application

Dilution Ratio	WB 1:500 - 1:2000. IF 1:200 - 1:1000. ELISA: 1:40000. IHC 1:100 - 1:300.
Molecular Weight	77kD

Product Name: PKC δ (phospho Tyr52) Rabbit Polyclonal Antibody
Catalog #: APRab05261



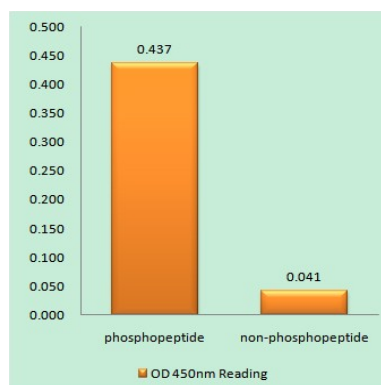
Background

Protein kinase C (PKC) is a family of serine- and threonine-specific protein kinases that can be activated by calcium and the second messenger diacylglycerol. PKC family members phosphorylate a wide variety of protein targets and are known to be involved in diverse cellular signaling pathways. PKC family members also serve as major receptors for phorbol esters, a class of tumor promoters. Each member of the PKC family has a specific expression profile and is believed to play distinct roles in cells. The protein encoded by this gene is one of the PKC family members. Studies both in human and mice demonstrate that this kinase is involved in B cell signaling and in the regulation of growth, apoptosis, and differentiation of a variety of cell types. Alternatively spliced transcript variants encoding the same protein have been observed. [provided by RefSeq, Jul 2008],catalytic activity:ATP + a protein = ADP + a phosphoprotein.,domain:The C1 domain, containing the phorbol ester/DAG-type region 1 (C1A) and 2 (C1B), is the diacylglycerol sensor.,domain:The C2 domain is a non-calcium binding domain. It binds proteins containing phosphotyrosine in a sequence-specific manner.,enzyme regulation:Three specific sites; Thr-507 (activation loop of the kinase domain), Ser-645 (turn motif) and Ser-664 (hydrophobic region), need to be phosphorylated for its full activation.,function:This is calcium-independent, phospholipid-dependent, serine- and threonine-specific enzyme. PKC is activated by diacylglycerol which in turn phosphorylates a range of cellular proteins. PKC also serves as the receptor for phorbol esters, a class of tumor promoters. May play a role in antigen-dependent control of B-cell function. Phosphorylates MUC1 in the C-terminal and regulates the interaction between MUC1 and beta-catenin.,PTM:Phosphorylated on Thr-507, within the activation loop. Autophosphorylated and/or phosphorylated. Although the Thr-507 phosphorylation occurs it is not a prerequisite for enzymatic activity.,similarity:Belongs to the protein kinase superfamily. AGC Ser/Thr protein kinase family. PKC subfamily.,similarity:Contains 1 AGC-kinase C-terminal domain.,similarity:Contains 1 C2 domain.,similarity:Contains 1 protein kinase domain.,similarity:Contains 2 phorbol-ester/DAG-type zinc fingers.,subunit:Interacts with PDK1, RAD9A, CDCP1 and MUC1.,

Research Area

Regulation_Microtubule; Regulation of Actin Dynamics; Stem cell pathway; Insulin Receptor; B Cell Receptor; AMPK

Image Data

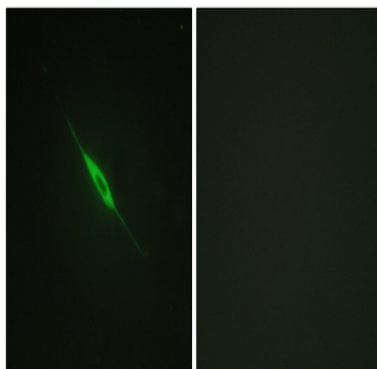


Enzyme-Linked Immunosorbent Assay (Phospho-ELISA) for Immunogen Phosphopeptide (Phospho-left) and Non-

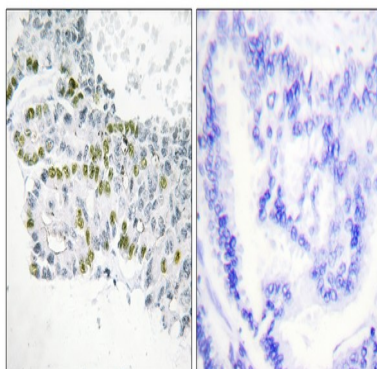
Product Name: PKC δ (phospho Tyr52) Rabbit Polyclonal Antibody
Catalog #: APRab05261



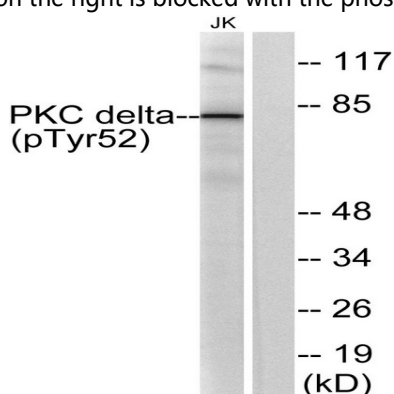
Phosphopeptide (Phospho-right) , using PKC delta (Phospho-Tyr52) Antibody



Immunofluorescence analysis of NIH/3T3 cells, using PKC delta (Phospho-Tyr52) Antibody. The picture on the right is blocked with the phospho peptide.



Immunohistochemistry analysis of paraffin-embedded human lung carcinoma, using PKC delta (Phospho-Tyr52) Antibody. The picture on the right is blocked with the phospho peptide.



Western blot analysis of lysates from Jurkat cells treated with starved 24h, using PKC delta (Phospho-Tyr52) Antibody. The lane on the right is blocked with the phospho peptide.

Note

For research use only.

**Product Name: PKC δ (phospho Tyr52) Rabbit Polyclonal
Antibody
Catalog #: APRab05261**

