

**Product Name: PDLIM5 (phospho Tyr251) Rabbit Polyclonal Antibody**  
**Catalog #: APRab05236**

---

## Summary

<b>Production Name</b>	PDLIM5 (phospho Tyr251) Rabbit Polyclonal Antibody
<b>Description</b>	Rabbit Polyclonal Antibody
<b>Host</b>	Rabbit
<b>Application</b>	ELISA,WB,
<b>Reactivity</b>	Human,Rat,Mouse

## Performance

<b>Conjugation</b>	Unconjugated
<b>Modification</b>	Phospho Antibody
<b>Isotype</b>	IgG
<b>Clonality</b>	Polyclonal
<b>Form</b>	Liquid
<b>Storage</b>	Store at 4°C short term. Aliquot and store at -20°C long term. Avoid freeze/thaw cycles.
<b>Buffer</b>	Liquid in PBS containing 50% glycerol, 0.5% BSA and 0.02% New type preservative N.
<b>Purification</b>	Affinity purification

## Immunogen

<b>Gene Name</b>	PDLIM5
<b>Alternative Names</b>	PDLIM5; ENH; L9; PDZ and LIM domain protein 5; Enigma homolog; Enigma-like PDZ and LIM domains protein
<b>Gene ID</b>	10611.0
<b>SwissProt ID</b>	Q96HC4.Synthesized phospho-peptide around the phosphorylation site of human PDLIM5 (phospho Tyr251)

## Application

<b>Dilution Ratio</b>	WB 1:500-2000; ELISA 2000-20000
<b>Molecular Weight</b>	64kD

**Product Name: PDLIM5 (phospho Tyr251) Rabbit Polyclonal Antibody**  
**Catalog #: APRab05236**

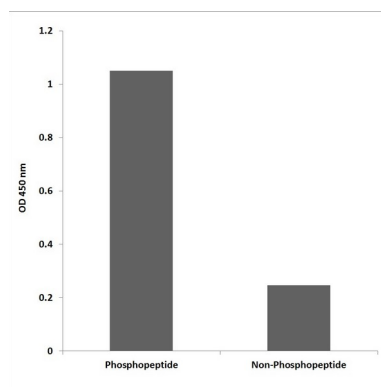


## Background

This gene encodes a member of a family of proteins that possess a 100-amino acid PDZ domain at the N terminus and one to three LIM domains at the C-terminus. This family member functions as a scaffold protein that tethers protein kinases to the Z-disk in striated muscles. It is thought to function in cardiomyocyte expansion and in restraining postsynaptic growth of excitatory synapses. Alternative splicing of this gene results in multiple transcript variants. [provided by RefSeq, Jan 2012],caution:The sequence shown here is derived from an Ensembl automatic analysis pipeline and should be considered as preliminary data.,disease:May play a role in genetic susceptibility to schizophrenia. PDLIM5 is commonly increased in the brain of patients with bipolar disorder, schizophrenia, and major depression.,function:May play an important role in the heart development by scaffolding PKC to the Z-disk region.,similarity:Contains 1 PDZ (DHR) domain.,similarity:Contains 3 LIM zinc-binding domains.,subunit:Interacts with various PKC isoforms through the LIM domains. Interacts with actin and alpha-actinin through the PDZ domain.,tissue specificity:Heart and skeletal muscle specific.,

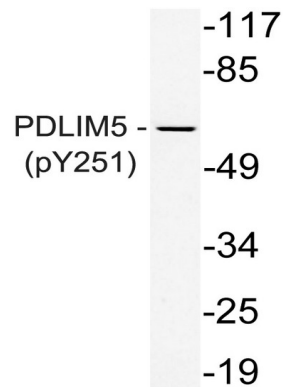
## Research Area

## Image Data

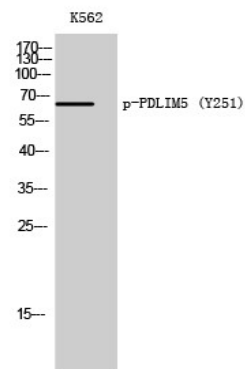


Enzyme-Linked Immunosorbent Assay (Phospho-ELISA) for Immunogen Phosphopeptide (Phospho-left) and Non-Phosphopeptide (Phospho-right) , using PDLIM5 (Phospho-Tyr251) Antibody

**Product Name: PDLIM5 (phospho Tyr251) Rabbit Polyclonal Antibody**  
**Catalog #: APRab05236**



Western blot analysis of lysate from K562 cells, using phospho-PDLIM5 (Phospho-Tyr251) antibody.



Western Blot analysis of K562 cells using Phospho-PDLIM5 (Y251) Polyclonal Antibody

## Note

For research use only.