

**Product Name: PDK1 (phospho Ser241) Rabbit Polyclonal Antibody**  
**Catalog #: APRab05234**

---

## Summary

|                        |  |
|------------------------|--|
| <b>Production Name</b> | PDK1 (phospho Ser241) Rabbit Polyclonal Antibody |
| <b>Description</b>     | Rabbit Polyclonal Antibody                       |
| <b>Host</b>            | Rabbit   |
| <b>Application</b>     | WB,IHC,ELISA                                     |
| <b>Reactivity</b>      | Human,Mouse,Rat                                  |

## Performance

|                     |  |
|---------------------|--|
| <b>Conjugation</b>  | Unconjugated   |
| <b>Modification</b> | Phospho Antibody   |
| <b>Isotype</b>      | IgG  |
| <b>Clonality</b>    | Polyclonal   |
| <b>Form</b>         | Liquid   |
| <b>Storage</b>      | Store at 4°C short term. Aliquot and store at -20°C long term. Avoid freeze/thaw cycles. |
| <b>Buffer</b>       | Liquid in PBS containing 50% glycerol, 0.5% BSA and 0.02% New type preservative N.       |
| <b>Purification</b> | Affinity purification  |

## Immunogen

|                          |   |
|--------------------------|---|
| <b>Gene Name</b>         | PDPK1   |
| <b>Alternative Names</b> | PDPK1; PDK1; 3-phosphoinositide-dependent protein kinase 1; hPDK1   |
| <b>Gene ID</b>           | 5170.0  |
| <b>SwissProt ID</b>      | O15530.The antiserum was produced against synthesized peptide derived from human PDK1 around the phosphorylation site of Ser241. AA range:210-259 |

## Application

|                         |  |
|-------------------------|--|
| <b>Dilution Ratio</b>   | WB 1:500 - 1:2000. IHC 1:100 - 1:300. ELISA: 1:20000.. |
| <b>Molecular Weight</b> | 63kD   |

**Product Name: PDK1 (phospho Ser241) Rabbit  
Polyclonal Antibody  
Catalog #: APRab05234**

---

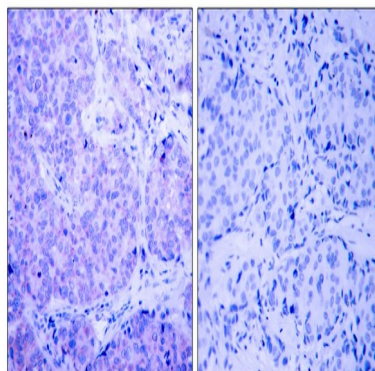
## Background

catalytic activity:ATP + a protein = ADP + a phosphoprotein.,function:Phosphorylates and activates not only PKB/AKT, but also PKA, PKC-zeta, RPS6KA1 and RPS6KB1. May play a general role in signaling processes and in development (By similarity). Isoform 3 is catalytically inactive.,PTM:Phosphorylated on tyrosine and serine/threonine. Phosphorylation on Ser-241 in the activation loop is required for full activity. PDK1 itself can autophosphorylate Ser-241, leading to its own activation.,similarity:Belongs to the protein kinase superfamily.,similarity:Belongs to the protein kinase superfamily. AGC Ser/Thr protein kinase family. PDK1 subfamily.,similarity:Contains 1 PH domain.,similarity:Contains 1 protein kinase domain.,subcellular location:Membrane-associated after cell stimulation leading to its translocation. Tyrosine phosphorylation seems to occur only at the plasma membrane.,subunit:Interacts with TUSC4.,tissue specificity:Appears to be expressed ubiquitously.,catalytic activity:ATP + a protein = ADP + a phosphoprotein.,function:Phosphorylates and activates not only PKB/AKT, but also PKA, PKC-zeta, RPS6KA1 and RPS6KB1. May play a general role in signaling processes and in development (By similarity). Isoform 3 is catalytically inactive.,PTM:Phosphorylated on tyrosine and serine/threonine. Phosphorylation on Ser-241 in the activation loop is required for full activity. PDK1 itself can autophosphorylate Ser-241, leading to its own activation.,similarity:Belongs to the protein kinase superfamily.,similarity:Belongs to the protein kinase superfamily. AGC Ser/Thr protein kinase family. PDK1 subfamily.,similarity:Contains 1 PH domain.,similarity:Contains 1 protein kinase domain.,subcellular location:Membrane-associated after cell stimulation leading to its translocation. Tyrosine phosphorylation seems to occur only at the plasma membrane.,subunit:Interacts with TUSC4.,tissue specificity:Appears to be expressed ubiquitously.,

## Research Area

PPAR;mTOR;Focal adhesion;Insulin\_Receptor;Aldosterone-regulated sodium reabsorption;Endometrial cancer;Prostate cancer;Non-small cell lung cancer;

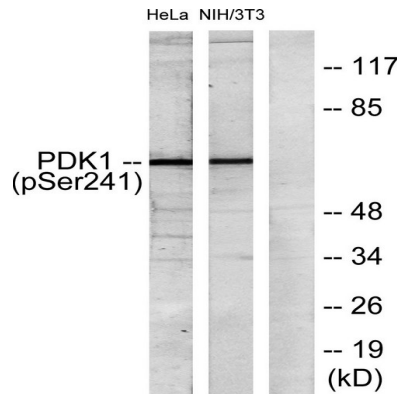
## Image Data



Immunohistochemistry analysis of paraffin-embedded human breast carcinoma, using PDK1 (Phospho-Ser241) Antibody.  
The picture on the right is blocked with the phospho peptide.

---

**Product Name: PDK1 (phospho Ser241) Rabbit  
Polyclonal Antibody  
Catalog #: APRab05234**



Western blot analysis of lysates from HeLa cells and NIH/3T3 cells, using PDK1 (Phospho-Ser241) Antibody. The lane on the right is blocked with the phospho peptide.

### Note

For research use only.