

Product Name: PDGFR- α (phospho Tyr754) Rabbit Polyclonal Antibody
Catalog #: APRab05227



Summary

| | |
|------------------------|---|
| Production Name | PDGFR- α (phospho Tyr754) Rabbit Polyclonal Antibody |
| Description | Rabbit Polyclonal Antibody |
| Host | Rabbit |
| Application | ELISA,IHC,WB |
| Reactivity | Human,Mouse,Rat |

Performance

| | |
|---------------------|--|
| Conjugation | Unconjugated |
| Modification | Phospho Antibody |
| Isotype | IgG |
| Clonality | Polyclonal |
| Form | Liquid |
| Storage | Store at 4°C short term. Aliquot and store at -20°C long term. Avoid freeze/thaw cycles. |
| Buffer | Liquid in PBS containing 50% glycerol, 0.5% BSA and 0.02% New type preservative N. |
| Purification | Affinity purification |

Immunogen

| | |
|--------------------------|--|
| Gene Name | PDGFRA |
| Alternative Names | PDGFRA; PDGFR2; RHEPDGFRA; Platelet-derived growth factor receptor alpha; PDGF-R-alpha; PDGFR-alpha; Alpha platelet-derived growth factor receptor; Alpha-type platelet-derived growth factor receptor; CD140 antigen-like family member A; CD14 |
| Gene ID | 5156.0 |
| SwissProt ID | P16234.The antiserum was produced against synthesized peptide derived from human PDGFR alpha around the phosphorylation site of Tyr754. AA range:721-770 |

Application

| | |
|-------------------------|---|
| Dilution Ratio | WB 1:500 - 1:2000. IHC 1:100 - 1:300. ELISA: 1:5000.. |
| Molecular Weight | 122kD |

Product Name: PDGFR- α (phospho Tyr754) Rabbit Polyclonal Antibody
Catalog #: APRab05227



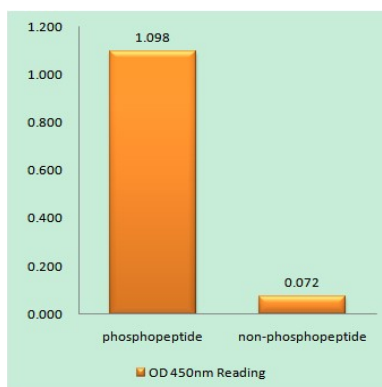
Background

This gene encodes a cell surface tyrosine kinase receptor for members of the platelet-derived growth factor family. These growth factors are mitogens for cells of mesenchymal origin. The identity of the growth factor bound to a receptor monomer determines whether the functional receptor is a homodimer or a heterodimer, composed of both platelet-derived growth factor receptor alpha and beta polypeptides. Studies suggest that this gene plays a role in organ development, wound healing, and tumor progression. Mutations in this gene have been associated with idiopathic hypereosinophilic syndrome, somatic and familial gastrointestinal stromal tumors, and a variety of other cancers. [provided by RefSeq, Mar 2012],catalytic activity:ATP + a [protein]-L-tyrosine = ADP + a [protein]-L-tyrosine phosphate.,disease:A fusion of PDGFRA and FIP1L1 (FIP1L1-PDGFR), due to an interstitial chromosomal deletion, is the cause of some cases of hypereosinophilic syndrome (HES) [MIM:607685]. HES is a rare hematologic disorder characterized by sustained overproduction of eosinophils in the bone marrow, eosinophilia, tissue infiltration and organ damage.,function:Receptor that binds both PDGFA and PDGFB and has a tyrosine-protein kinase activity.,similarity:Belongs to the protein kinase superfamily. Tyr protein kinase family. CSF-1/PDGF receptor subfamily.,similarity:Contains 1 protein kinase domain.,similarity:Contains 5 Ig-like C2-type (immunoglobulin-like) domains.,subunit:Homodimer, and heterodimer with PDGFRB. Interacts with the SH2 domain of SHB via phosphorylated Tyr-720 (By similarity). Interacts with the SH2 domain of SHF via phosphorylated Tyr-720.,tissue specificity:Expressed in primary and metastatic colon tumors and in normal colon tissue. Tumors may express a different isoform to that found in normal tissue.,

Research Area

MAPK_ERK_Growth;MAPK_G_Protein;Calcium;Cytokine-cytokine receptor interaction;Endocytosis;Focal adhesion;Gap junction;Regulates Actin and Cytoskeleton;Pathways in cancer;Colorectal cancer;Glioma;Prostate cancer;Melanoma;

Image Data

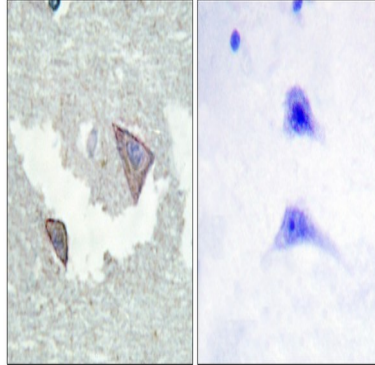


Enzyme-Linked Immunosorbent Assay (Phospho-ELISA) for Immunogen Phosphopeptide (Phospho-left) and Non-

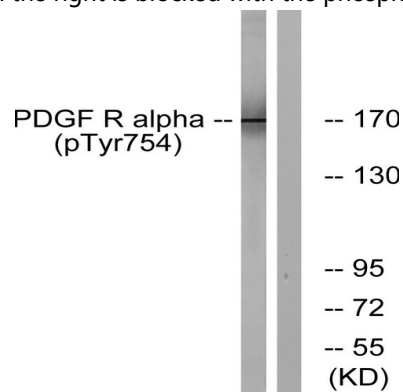
Product Name: PDGFR- α (phospho Tyr754) Rabbit Polyclonal Antibody
Catalog #: APRab05227



Phosphopeptide (Phospho-right) , using PDGFR alpha (Phospho-Tyr754) Antibody



Immunohistochemistry analysis of paraffin-embedded human brain, using PDGFR alpha (Phospho-Tyr754) Antibody. The picture on the right is blocked with the phospho peptide.



Western blot analysis of PDGFR alpha (Phospho-Tyr754) Antibody. The lane on the right is blocked with the PDGFR alpha (Phospho-Tyr754) peptide.

Note

For research use only.