

**Product Name: PC-PLD2 (phospho Tyr169) Rabbit Polyclonal Antibody**  
**Catalog #: APRab05221**

---

## Summary

<b>Production Name</b>	PC-PLD2 (phospho Tyr169) Rabbit Polyclonal Antibody
<b>Description</b>	Rabbit Polyclonal Antibody
<b>Host</b>	Rabbit
<b>Application</b>	ELISA,IHC,WB
<b>Reactivity</b>	Human,Mouse,Rat

## Performance

<b>Conjugation</b>	Unconjugated
<b>Modification</b>	Phospho Antibody
<b>Isotype</b>	IgG
<b>Clonality</b>	Polyclonal
<b>Form</b>	Liquid
<b>Storage</b>	Store at 4°C short term. Aliquot and store at -20°C long term. Avoid freeze/thaw cycles.
<b>Buffer</b>	Liquid in PBS containing 50% glycerol, 0.5% BSA and 0.02% New type preservative N.
<b>Purification</b>	Affinity purification

## Immunogen

<b>Gene Name</b>	PLD2
<b>Alternative Names</b>	PLD2; Phospholipase D2; PLD 2; hPLD2; Choline phosphatase 2; PLD1C; Phosphatidylcholine-hydrolyzing phospholipase D2
<b>Gene ID</b>	5338.0
<b>SwissProt ID</b>	O14939.The antiserum was produced against synthesized peptide derived from human PLD2 around the phosphorylation site of Tyr169. AA range:136-185

## Application

<b>Dilution Ratio</b>	WB 1:500 - 1:2000. IHC 1:100 - 1:300. ELISA: 1:10000..
<b>Molecular Weight</b>	95kD

**Product Name: PC-PLD2 (phospho Tyr169) Rabbit Polyclonal Antibody**  
**Catalog #: APRab05221**

---

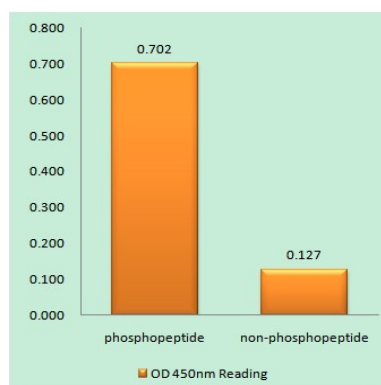
## Background

The protein encoded by this gene catalyzes the hydrolysis of phosphatidylcholine to phosphatidic acid and choline. The activity of the encoded enzyme is enhanced by phosphatidylinositol 4,5-bisphosphate and ADP-ribosylation factor-1. This protein localizes to the peripheral membrane and may be involved in cytoskeletal organization, cell cycle control, transcriptional regulation, and/or regulated secretion. Two transcript variants encoding different isoforms have been found for this gene.[provided by RefSeq, Jul 2011],catalytic activity:A phosphatidylcholine + H(2)O = choline + a phosphatidate.,enzyme regulation:Stimulated by phosphatidylinositol 4,5-bisphosphate and activated by the ADP-ribosylation factor-1 (ARF-1).,function:May have a role in signal-induced cytoskeletal regulation and/or endocytosis.,online information:Phospholipase D entry,similarity:Belongs to the phospholipase D family.,similarity:Contains 1 PH domain.,similarity:Contains 1 PX (phox homology) domain.,similarity:Contains 2 PLD phosphodiesterase domains.,subunit:Interacts with EGFR (By similarity). Interacts with PIP5K1A.,tissue specificity:Ubiquitous.,

## Research Area

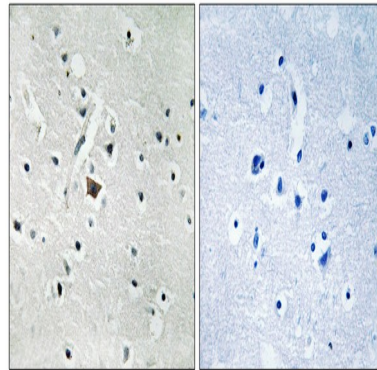
Glycerophospholipid metabolism;Ether lipid metabolism;Endocytosis;Fc gamma R-mediated phagocytosis;GnRH;

## Image Data

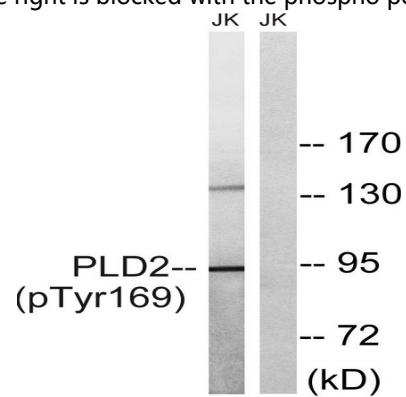


Enzyme-Linked Immunosorbent Assay (Phospho-ELISA) for Immunogen Phosphopeptide (Phospho-left) and Non-Phosphopeptide (Phospho-right) , using PLD2 (Phospho-Tyr169) Antibody

**Product Name: PC-PLD2 (phospho Tyr169) Rabbit Polyclonal Antibody**  
**Catalog #: APRab05221**



Immunohistochemistry analysis of paraffin-embedded human brain, using PLD2 (Phospho-Tyr169) Antibody. The picture on the right is blocked with the phospho peptide.



Western blot analysis of lysates from Jurkat cells treated with TNF 20ng/ml 30 ', using PLD2 (Phospho-Tyr169) Antibody. The lane on the right is blocked with the phospho peptide.

## Note

For research use only.