

**Product Name: Paxillin (phospho Tyr88) Rabbit Polyclonal Antibody**  
**Catalog #: APRab05217**

---

## Summary

<b>Production Name</b>	Paxillin (phospho Tyr88) Rabbit Polyclonal Antibody
<b>Description</b>	Rabbit Polyclonal Antibody
<b>Host</b>	Rabbit
<b>Application</b>	ELISA,WB,
<b>Reactivity</b>	Human,Rat,Mouse

## Performance

<b>Conjugation</b>	Unconjugated
<b>Modification</b>	Phospho Antibody
<b>Isotype</b>	IgG
<b>Clonality</b>	Polyclonal
<b>Form</b>	Liquid
<b>Storage</b>	Store at 4°C short term. Aliquot and store at -20°C long term. Avoid freeze/thaw cycles.
<b>Buffer</b>	Liquid in PBS containing 50% glycerol, 0.5% BSA and 0.02% New type preservative N.
<b>Purification</b>	Affinity purification

## Immunogen

<b>Gene Name</b>	PXN
<b>Alternative Names</b>	PXN; Paxillin
<b>Gene ID</b>	5829.0
<b>SwissProt ID</b>	P49023.Synthesized phospho-peptide around the phosphorylation site of human Paxillin (phospho Tyr88)

## Application

<b>Dilution Ratio</b>	WB 1:500 - 1:2000. ELISA: 1:10000..
<b>Molecular Weight</b>	68kD

**Product Name: Paxillin (phospho Tyr88) Rabbit Polyclonal Antibody**  
**Catalog #: APRab05217**

---

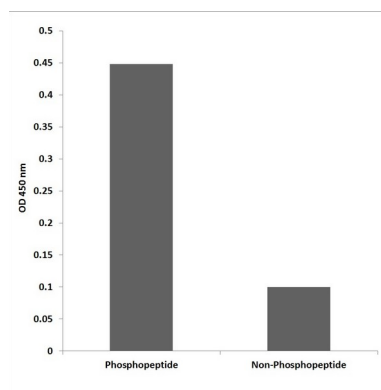
## Background

This gene encodes a cytoskeletal protein involved in actin-membrane attachment at sites of cell adhesion to the extracellular matrix (focal adhesion). Alternatively spliced transcript variants encoding different isoforms have been described for this gene. These isoforms exhibit different expression pattern, and have different biochemical, as well as physiological properties (PMID:9054445). [provided by RefSeq, Aug 2011],function:Cytoskeletal protein involved in actin-membrane attachment at sites of cell adhesion to the extracellular matrix (focal adhesion).,PTM:Phosphorylated on tyrosine residues during integrin-mediated cell adhesion, embryonic development, fibroblast transformation and following stimulation of cells by mitogens.,similarity:Belongs to the paxillin family.,similarity:Contains 3 LIM zinc-binding domains.,similarity:Contains 4 LIM zinc-binding domains.,subunit:Binds in vitro to vinculin as well as to the SH3 domain of c-SRC and, when tyrosine phosphorylated, to the SH2 domain of V-CRK. Isoform beta binds to focal adhesion kinase but weakly to vinculin. Isoform gamma binds to vinculin but only weakly to focal adhesion kinase. Interacts with GIT1, NUDT16L1/SDOS, PARVA and TGFBI1. Component of cytoplasmic complexes, which also contain GIT1, ARHGEF6 and PAK1 (By similarity). Binds ASAP2. Interacts with unphosphorylated ITGA4. Interacts with RNF5.,

## Research Area

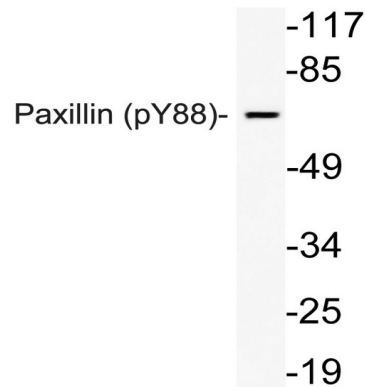
Chemokine;VEGF;Focal adhesion;Leukocyte transendothelial migration;Regulates Actin and Cytoskeleton;

## Image Data

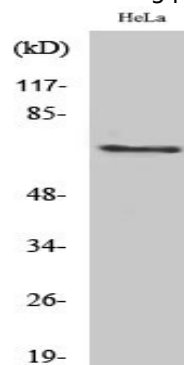


Enzyme-Linked Immunosorbent Assay (Phospho-ELISA) for Immunogen Phosphopeptide (Phospho-left) and Non-Phosphopeptide (Phospho-right) , using Paxillin (Phospho-Tyr88) Antibody

**Product Name: Paxillin (phospho Tyr88) Rabbit  
Polyclonal Antibody  
Catalog #: APRab05217**



Western blot analysis of lysate from HeLa cells using phospho-Paxillin (Phospho-Tyr88) antibody.



Western Blot analysis of various cells using Phospho-Paxillin (Y88) Polyclonal Antibody

## Note

For research use only.