

Product Name: Paxillin (phospho Tyr118) Rabbit Polyclonal Antibody
Catalog #: APRab05215

Summary

Production Name	Paxillin (phospho Tyr118) Rabbit Polyclonal Antibody
Description	Rabbit Polyclonal Antibody
Host	Rabbit
Application	WB,ELISA
Reactivity	Human,Mouse,Rat

Performance

Conjugation	Unconjugated
Modification	Phospho Antibody
Isotype	IgG
Clonality	Polyclonal
Form	Liquid
Storage	Store at 4°C short term. Aliquot and store at -20°C long term. Avoid freeze/thaw cycles.
Buffer	Liquid in PBS containing 50% glycerol, 0.5% BSA and 0.02% New type preservative N.
Purification	Affinity purification

Immunogen

Gene Name	PXN
Alternative Names	PXN; Paxillin
Gene ID	5829.0
SwissProt ID	P49023.The antiserum was produced against synthesized peptide derived from human Paxillin around the phosphorylation site of Tyr118. AA range:85-134

Application

Dilution Ratio	WB 1:500 - 1:2000. ELISA: 1:10000
Molecular Weight	64kD

Product Name: Paxillin (phospho Tyr118) Rabbit Polyclonal Antibody
Catalog #: APRab05215

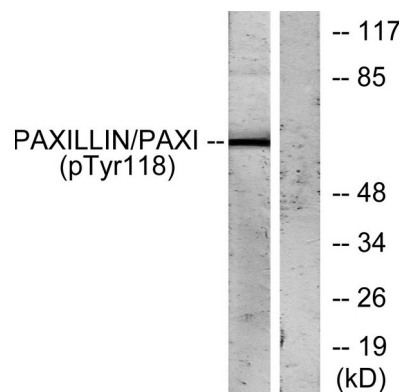
Background

This gene encodes a cytoskeletal protein involved in actin-membrane attachment at sites of cell adhesion to the extracellular matrix (focal adhesion). Alternatively spliced transcript variants encoding different isoforms have been described for this gene. These isoforms exhibit different expression pattern, and have different biochemical, as well as physiological properties (PMID:9054445). [provided by RefSeq, Aug 2011],function:Cytoskeletal protein involved in actin-membrane attachment at sites of cell adhesion to the extracellular matrix (focal adhesion).,PTM:Phosphorylated on tyrosine residues during integrin-mediated cell adhesion, embryonic development, fibroblast transformation and following stimulation of cells by mitogens.,similarity:Belongs to the paxillin family.,similarity:Contains 3 LIM zinc-binding domains.,similarity:Contains 4 LIM zinc-binding domains.,subunit:Binds in vitro to vinculin as well as to the SH3 domain of c-SRC and, when tyrosine phosphorylated, to the SH2 domain of V-CRK. Isoform beta binds to focal adhesion kinase but weakly to vinculin. Isoform gamma binds to vinculin but only weakly to focal adhesion kinase. Interacts with GIT1, NUDT16L1/SDOS, PARVA and TGFBI1. Component of cytoplasmic complexes, which also contain GIT1, ARHGEF6 and PAK1 (By similarity). Binds ASAP2. Interacts with unphosphorylated ITGA4. Interacts with RNF5.,

Research Area

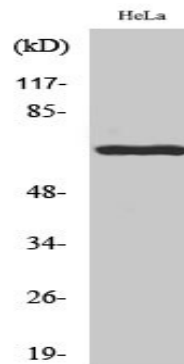
Chemokine;VEGF;Focal adhesion;Leukocyte transendothelial migration;Regulates Actin and Cytoskeleton;

Image Data



Western blot analysis of lysates from HeLa cells treated with EGF, using Paxillin (Phospho-Tyr118) Antibody. The lane on the right is blocked with the phospho peptide.

**Product Name: Paxillin (phospho Tyr118) Rabbit
Polyclonal Antibody
Catalog #: APRab05215**



Western Blot analysis of various cells using Phospho-Paxillin (Y118) Polyclonal Antibody

Note

For research use only.