

Product Name: PAK β (phospho Ser154) Rabbit Polyclonal Antibody
Catalog #: APRab05207

Summary

Production Name	PAK β (phospho Ser154) Rabbit Polyclonal Antibody
Description	Rabbit Polyclonal Antibody
Host	Rabbit
Application	ELISA,IHC,WB
Reactivity	Human,Mouse,Rat

Performance

Conjugation	Unconjugated
Modification	Phospho Antibody
Isotype	IgG
Clonality	Polyclonal
Form	Liquid
Storage	Store at 4°C short term. Aliquot and store at -20°C long term. Avoid freeze/thaw cycles.
Buffer	Liquid in PBS containing 50% glycerol, 0.5% BSA and 0.02% New type preservative N.
Purification	Affinity purification

Immunogen

Gene Name	PAK3
Alternative Names	PAK3; OPHN3; Serine/threonine-protein kinase PAK 3; Beta-PAK; Oligophrenin-3; p21-activated kinase 3; PAK-3
Gene ID	5063.0
SwissProt ID	O75914.The antiserum was produced against synthesized peptide derived from human PAK3 around the phosphorylation site of Ser154. AA range:121-170

Application

Dilution Ratio	WB 1:500 - 1:2000. IHC 1:100 - 1:300. ELISA: 1:20000..
Molecular Weight	72kD

Product Name: PAK β (phospho Ser154) Rabbit Polyclonal Antibody
Catalog #: APRab05207

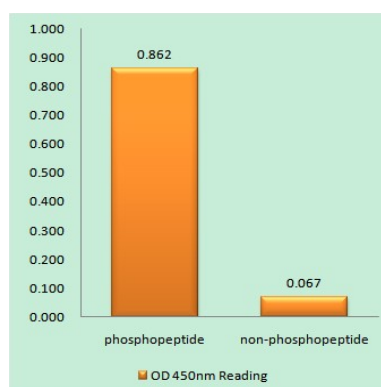
Background

The protein encoded by this gene is a serine-threonine kinase and forms an activated complex with GTP-bound RAS-like (P21), CDC2 and RAC1. This protein may be necessary for dendritic development and for the rapid cytoskeletal reorganization in dendritic spines associated with synaptic plasticity. Defects in this gene are the cause of non-syndromic mental retardation X-linked type 30 (MRX30), also called X-linked mental retardation type 47 (MRX47). Alternatively spliced transcript variants encoding different isoforms have been identified. [provided by RefSeq, Apr 2016],catalytic activity:ATP + a protein = ADP + a phosphoprotein.,cofactor:Magnesium.,disease:Defects in PAK3 are the cause of mental retardation X-linked type 30 (MRX30) [MIM:300558]; also called X-linked mental retardation type 47 (MRX47). Mental retardation is a mental disorder characterized by significantly sub-average general intellectual functioning associated with impairments in adaptive behavior and manifested during the developmental period. Non-syndromic mental retardation patients do not manifest other clinical signs.,enzyme regulation:Activated by binding small G proteins. Binding of GTP-bound CDC42 or RAC1 to the autoregulatory region releases monomers from the autoinhibited dimer, enables phosphorylation of Thr-436 and allows the kinase domain to adopt an active structure.,function:Key regulator of synapse formation and plasticity in the hippocampus.,PTM:Autophosphorylated when activated by CDC42/p21.,similarity:Belongs to the protein kinase superfamily.,similarity:Belongs to the protein kinase superfamily. STE Ser/Thr protein kinase family. STE20 subfamily.,similarity:Contains 1 CRIB domain.,similarity:Contains 1 protein kinase domain.,subunit:Interacts tightly with GTP-bound but not GDP-bound CDC42/p21 and RAC1. Shows highly specific binding to the SH3 domains of phospholipase C-gamma and of adapter protein NCK.,tissue specificity:Highly expressed in postmitotic neurons of the developing and postnatal cerebral cortex and hippocampus.,

Research Area

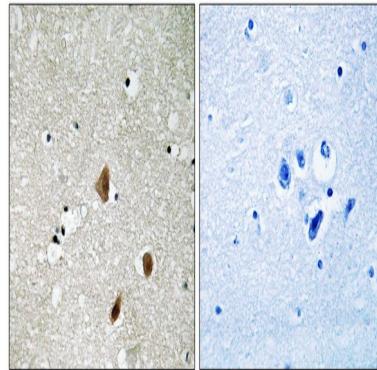
ErbB_HER;Axon guidance;Focal adhesion;T_Cell_Receptor;Regulates Actin and Cytoskeleton;Renal cell carcinoma;

Image Data

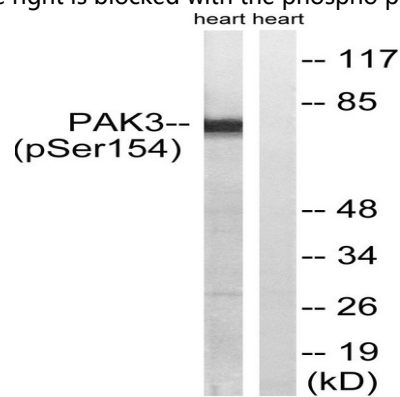


Enzyme-Linked Immunosorbent Assay (Phospho-ELISA) for Immunogen Phosphopeptide (Phospho-left) and Non-Phosphopeptide (Phospho-right), using PAK3 (Phospho-Ser154) Antibody

Product Name: PAK β (phospho Ser154) Rabbit Polyclonal Antibody
Catalog #: APRab05207



Immunohistochemistry analysis of paraffin-embedded human brain, using PAK3 (Phospho-Ser154) Antibody. The picture on the right is blocked with the phospho peptide.



Western blot analysis of lysates from rat heart, using PAK3 (Phospho-Ser154) Antibody. The lane on the right is blocked with the phospho peptide.

Note

For research use only.