

Product Name: p70 S6 kinase β (phospho Ser423) Rabbit Polyclonal Antibody
Catalog #: APRab05194

Summary

Production Name	p70 S6 kinase β (phospho Ser423) Rabbit Polyclonal Antibody
Description	Rabbit Polyclonal Antibody
Host	Rabbit
Application	WB
Reactivity	Human,Mouse

Performance

Conjugation	Unconjugated
Modification	Phospho Antibody
Isotype	IgG
Clonality	Polyclonal
Form	Liquid
Storage	Store at 4°C short term. Aliquot and store at -20°C long term. Avoid freeze/thaw cycles.
Buffer	Liquid in PBS containing 50% glycerol, 0.5% BSA and 0.02% New type preservative N.
Purification	Affinity purification

Immunogen

Gene Name	RPS6KB2 RPS6KB2; STK14B; Ribosomal protein S6 kinase beta-2; S6K-beta-2; S6K2; 70 kDa
Alternative Names	ribosomal protein S6 kinase 2; P70S6K2; p70-S6K 2; S6 kinase-related kinase; SRK; Serine/threonine-protein kinase 14B; p70 ribosomal S6 kinase beta; S6K-beta; p70
Gene ID	6199.0
SwissProt ID	Q9UBS0.The antiserum was produced against synthesized peptide derived from human p70 S6 Kinase beta around the phosphorylation site of Ser423. AA range:389-438

Application

Dilution Ratio	WB 1:500-1:2000. ELISA: 1:5000.
Molecular Weight	53kD

Product Name: p70 S6 kinase β (phospho Ser423) Rabbit Polyclonal Antibody
Catalog #: APRab05194

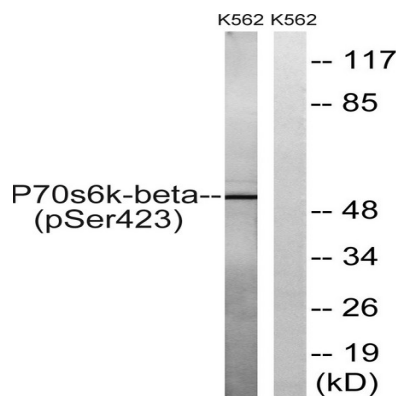
Background

ribosomal protein S6 kinase B2(RPS6KB2) Homo sapiens This gene encodes a member of the RSK (ribosomal S6 kinase) family of serine/threonine kinases. This kinase contains a kinase catalytic domain and phosphorylates the S6 ribosomal protein and eukaryotic translation initiation factor 4B (eIF4B). Phosphorylation of S6 leads to an increase in protein synthesis and cell proliferation. [provided by RefSeq, Jan 2015],catalytic activity:ATP + a protein = ADP + a phosphoprotein.,function:Phosphorylates specifically ribosomal protein S6.,PTM:Phosphorylated upon DNA damage, probably by ATM or ATR.,similarity:Belongs to the protein kinase superfamily.,similarity:Belongs to the protein kinase superfamily. AGC Ser/Thr protein kinase family. S6 kinase subfamily.,similarity:Contains 1 AGC-kinase C-terminal domain.,similarity:Contains 1 protein kinase domain.,

Research Area

Insulin Receptor; Regulates Angiogenesis; mTOR; B Cell Receptor; AMPK

Image Data



Western blot analysis of lysates from K562 cells treated with EGF 200ng/ml 5', using p70 S6 Kinase beta (Phospho-Ser423) Antibody. The lane on the right is blocked with the phospho peptide.

Note

For research use only.