

**Product Name: p23 (phospho Ser113) Rabbit Polyclonal Antibody**  
**Catalog #: APRab05146**

---

## Summary

|                        |   |
|------------------------|---|
| <b>Production Name</b> | p23 (phospho Ser113) Rabbit Polyclonal Antibody |
| <b>Description</b>     | Rabbit Polyclonal Antibody                      |
| <b>Host</b>            | Rabbit  |
| <b>Application</b>     | IHC,WB,ELISA                                    |
| <b>Reactivity</b>      | Human,Mouse,Rat                                 |

## Performance

|                     |  |
|---------------------|--|
| <b>Conjugation</b>  | Unconjugated   |
| <b>Modification</b> | Phospho Antibody   |
| <b>Isotype</b>      | IgG  |
| <b>Clonality</b>    | Polyclonal   |
| <b>Form</b>         | Liquid   |
| <b>Storage</b>      | Store at 4°C short term. Aliquot and store at -20°C long term. Avoid freeze/thaw cycles. |
| <b>Buffer</b>       | Liquid in PBS containing 50% glycerol, 0.5% BSA and 0.02% New type preservative N.       |
| <b>Purification</b> | Affinity purification  |

## Immunogen

|                          |  |
|--------------------------|--|
| <b>Gene Name</b>         | PTGES3<br>PTGES3; P23; TEBP; Prostaglandin E synthase 3; Cytosolic prostaglandin E2 synthase;  |
| <b>Alternative Names</b> | cPGES; Hsp90 co-chaperone; Progesterone receptor complex p23; Telomerase-binding protein p23   |
| <b>Gene ID</b>           | 10728.0  |
| <b>SwissProt ID</b>      | Q15185.The antiserum was produced against synthesized peptide derived from human TEBP around the phosphorylation site of Ser113. AA range:79-128 |

## Application

|                         |  |
|-------------------------|--|
| <b>Dilution Ratio</b>   | WB 1:500 - 1:2000. IHC 1:100 - 1:300. ELISA: 1:10000.. |
| <b>Molecular Weight</b> | 24kD   |

---

**Product Name: p23 (phospho Ser113) Rabbit Polyclonal Antibody**  
**Catalog #: APRab05146**



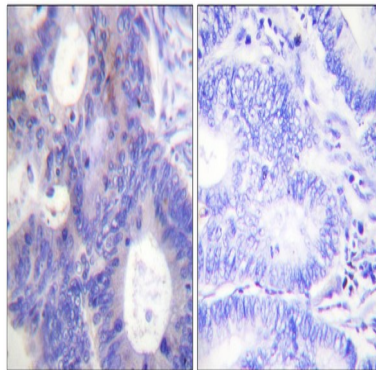
---

## Background

This gene encodes an enzyme that converts prostaglandin endoperoxide H2 (PGH2) to prostaglandin E2 (PGE2). This protein functions as a co-chaperone with heat shock protein 90 (HSP90), localizing to response elements in DNA and disrupting transcriptional activation complexes. Alternative splicing results in multiple transcript variants. There are multiple pseudogenes of this gene on several different chromosomes. [provided by RefSeq, Feb 2016], catalytic activity: (5Z,13E)-(15S)-9-alpha,11-alpha-epidioxy-15-hydroxyprosta-5,13-dienoate = (5Z,13E)-(15S)-11-alpha,15-dihydroxy-9-oxoprosta-5,13-dienoate., function: Molecular chaperone that localizes to genomic response elements in a hormone-dependent manner and disrupts receptor-mediated transcriptional activation, by promoting disassembly of transcriptional regulatory complexes., pathway: Lipid metabolism; prostaglandin biosynthesis., similarity: Belongs to the p23/wos2 family., similarity: Contains 1 CS domain., subunit: Binds to telomerase and to the progesterone receptor.,

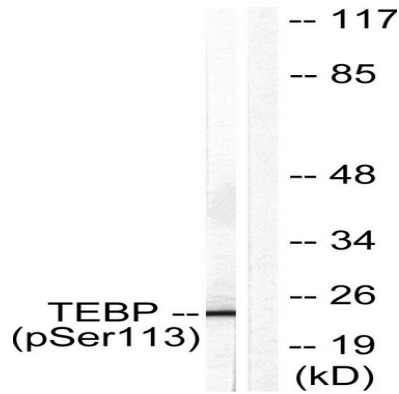
## Research Area

## Image Data

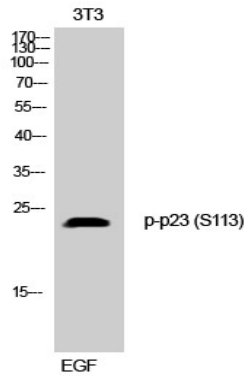


Immunohistochemistry analysis of paraffin-embedded human colon carcinoma, using TEBP (Phospho-Ser113) Antibody.  
The picture on the right is blocked with the phospho peptide.

**Product Name: p23 (phospho Ser113) Rabbit Polyclonal Antibody**  
**Catalog #: APRab05146**



Western blot analysis of lysates from NIH/3T3 cells treated with EGF 200ng/ml 30', using TEBP (Phospho-Ser113) Antibody. The lane on the right is blocked with the phospho peptide.



Western Blot analysis of 3T3 cells using Phospho-p23 (S113) Polyclonal Antibody

## Note

For research use only.