

Product Name: NUDC (phospho Ser326) Rabbit Polyclonal Antibody
Catalog #: APRab05127

Summary

Production Name	NUDC (phospho Ser326) Rabbit Polyclonal Antibody
Description	Rabbit Polyclonal Antibody
Host	Rabbit
Application	IHC,WB,ELISA
Reactivity	Human,Mouse,Rat

Performance

Conjugation	Unconjugated
Modification	Phospho Antibody
Isotype	IgG
Clonality	Polyclonal
Form	Liquid
Storage	Store at 4°C short term. Aliquot and store at -20°C long term. Avoid freeze/thaw cycles.
Buffer	Liquid in PBS containing 50% glycerol, 0.5% BSA and 0.02% New type preservative N.
Purification	Affinity purification

Immunogen

Gene Name	NUDC
Alternative Names	NUDC; Nuclear migration protein nudC; Nuclear distribution protein C homolog
Gene ID	10726.0
SwissProt ID	Q9Y266.The antiserum was produced against synthesized peptide derived from human NudC around the phosphorylation site of Ser326. AA range:282-331

Application

Dilution Ratio	WB 1:500 - 1:2000. IHC 1:100 - 1:300. ELISA: 1:5000..
Molecular Weight	45kD

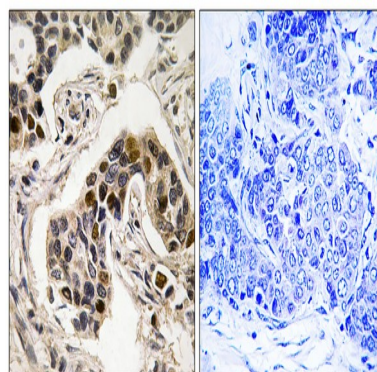
**Product Name: NUDC (phospho Ser326) Rabbit
Polyclonal Antibody
Catalog #: APRab05127**

Background

This gene encodes a nuclear distribution protein that plays an essential role in mitosis and cytokinesis. The encoded protein is involved in spindle formation during mitosis and in microtubule organization during cytokinesis. Pseudogenes of this gene are found on chromosome 2. [provided by RefSeq, Feb 2012],function:Plays a role in neurogenesis and neuronal migration (By similarity). Necessary for correct formation of mitotic spindles and chromosome separation during mitosis. Necessary for cytokinesis and cell proliferation.,induction:Up-regulated in actively dividing hematopoietic precursor cells. Up-regulated in cultured erythroleukemia TF-1 cells by granulocyte-macrophage colony-stimulating factor. Strongly down-regulated during maturation of erythroid precursor cells.,PTM:Reversibly phosphorylated on serine residues during the M phase of the cell cycle. Phosphorylation on Ser-274 and Ser-326 is necessary for correct formation of mitotic spindles and chromosome separation during mitosis. Phosphorylated by PLK and other kinases.,similarity:Belongs to the nudC family.,similarity:Contains 1 CS domain.,subcellular location:In a filamentous pattern adjacent to the nucleus of migrating cerebellar granule cells. Colocalizes with tubulin and dynein and with the microtubule organizing center. Distributed throughout the cytoplasm of non-migrating cells. A small proportion is nuclear, in a punctate pattern.,subunit:Binds PLK1. Binds PFAH1B1 (By similarity). Part of a complex containing PLK1, NUDC, dynein and dynactin.,tissue specificity:Ubiquitous. Highly expressed in fetal liver, kidney, lung and brain. Highly expressed in adult pancreas, kidney, skeletal muscle, liver, lung, placenta, prostate, brain and heart.,

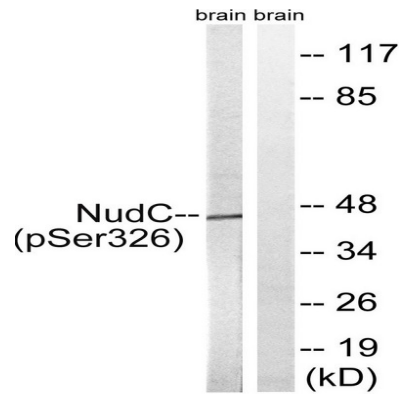
Research Area

Image Data

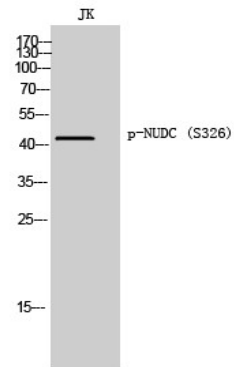


Immunohistochemistry analysis of paraffin-embedded human breast carcinoma, using NudC (Phospho-Ser326) Antibody.
The picture on the right is blocked with the phospho peptide.

Product Name: NUDC (phospho Ser326) Rabbit Polyclonal Antibody
Catalog #: APRab05127



Western blot analysis of lysates from rat brain, using NudC (Phospho-Ser326) Antibody. The lane on the right is blocked with the phospho peptide.



Western Blot analysis of JK cells using Phospho-NUDC (S326) Polyclonal Antibody

Note

For research use only.