

Product Name: MRLC2 (phospho Ser18) Rabbit Polyclonal Antibody
Catalog #: APRab05039

Summary

Production Name	MRLC2 (phospho Ser18) Rabbit Polyclonal Antibody
Description	Rabbit Polyclonal Antibody
Host	Rabbit
Application	ELISA,IF,IHC,WB
Reactivity	Human,Mouse,Rat

Performance

Conjugation	Unconjugated
Modification	Phospho Antibody
Isotype	IgG
Clonality	Polyclonal
Form	Liquid
Storage	Store at 4°C short term. Aliquot and store at -20°C long term. Avoid freeze/thaw cycles.
Buffer	Liquid in PBS containing 50% glycerol, 0.5% BSA and 0.02% New type preservative N.
Purification	Affinity purification

Immunogen

Gene Name	MYL9 MYL9; MLC2; MRLC1; MYRL2; Myosin regulatory light polypeptide 9; 20 kDa myosin light chain; LC20; MLC-2C; Myosin RLC; Myosin regulatory light chain 2; smooth muscle isoform; Myosin regulatory light chain 9; Myosin regulatory light chain MRL
Alternative Names	
Gene ID	10398/10627 P24844.The antiserum was produced against synthesized peptide derived from human
SwissProt ID	Myosin regulatory light chain 2 around the phosphorylation site of Ser18. AA range:3-52

Application

Dilution Ratio	WB 1:500 - 1:2000. IF 1:200 - 1:1000. ELISA: 1:20000. IHC 1:100 - 1:300.
-----------------------	--

Product Name: MRLC2 (phospho Ser18) Rabbit Polyclonal Antibody
Catalog #: APRab05039

Molecular Weight 18kD

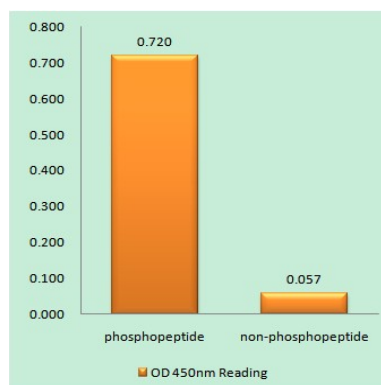
Background

Myosin, a structural component of muscle, consists of two heavy chains and four light chains. The protein encoded by this gene is a myosin light chain that may regulate muscle contraction by modulating the ATPase activity of myosin heads. The encoded protein binds calcium and is activated by myosin light chain kinase. Two transcript variants encoding different isoforms have been found for this gene. [provided by RefSeq, Jul 2008],function:Myosin regulatory subunit that plays an important role in regulation of both smooth muscle and nonmuscle cell contractile activity via its phosphorylation. Implicated in cytokinesis, receptor capping, and cell locomotion.,miscellaneous:This chain binds calcium.,PTM:Phosphorylation increases the actin-activated myosin ATPase activity and thereby regulates the contractile activity. It is required to generate the driving force in the migration of the cells but not necessary for localization of myosin-2 at the leading edge.,similarity:Contains 3 EF-hand domains.,subunit:Myosin is an hexamer of 2 heavy chains and 4 light chains.,tissue specificity:Smooth muscle tissues and in some, but not all, nonmuscle cells.,

Research Area

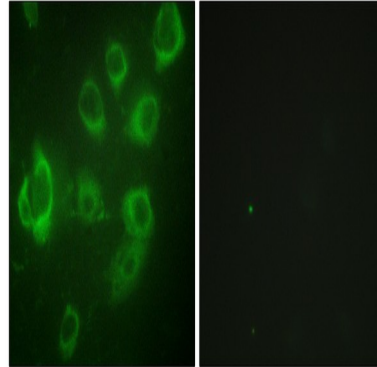
Vascular smooth muscle contraction;Focal adhesion;Tight junction;Leukocyte transendothelial migration;Regulates Actin and Cytoskeleton;

Image Data

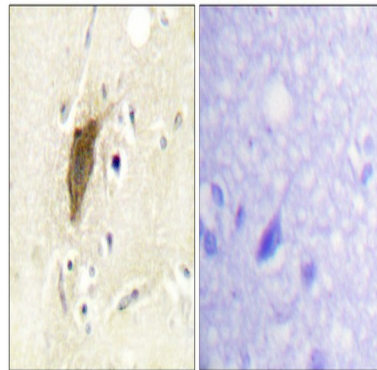


Enzyme-Linked Immunosorbent Assay (Phospho-ELISA) for Immunogen Phosphopeptide (Phospho-left) and Non-Phosphopeptide (Phospho-right) , using Myosin regulatory light chain 2 (Phospho-Ser18) Antibody

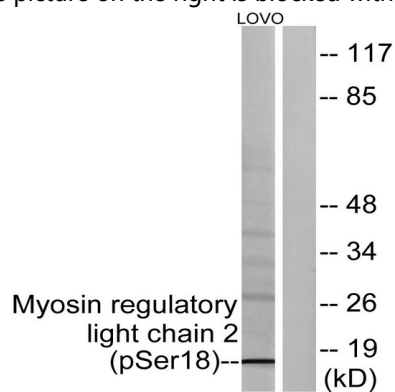
Product Name: MRLC2 (phospho Ser18) Rabbit Polyclonal Antibody
Catalog #: APRab05039



Immunofluorescence analysis of HUVEC cells, using Myosin regulatory light chain 2 (Phospho-Ser18) Antibody. The picture on the right is blocked with the phospho peptide.



Immunohistochemistry analysis of paraffin-embedded human brain, using Myosin regulatory light chain 2 (Phospho-Ser18) Antibody. The picture on the right is blocked with the phospho peptide.



Western blot analysis of lysates from LOVO cells treated with H₂O₂ 100uM 30', using Myosin regulatory light chain 2 (Phospho-Ser18) Antibody. The lane on the right is blocked with the phospho peptide.

Note

For research use only.