

**Product Name: Moesin/Ezrin/Radixin (phospho Thr558)
Rabbit Polyclonal Antibody
Catalog #: APRab05035**

Summary

Production Name	Moesin/Ezrin/Radixin (phospho Thr558) Rabbit Polyclonal Antibody
Description	Rabbit Polyclonal Antibody
Host	Rabbit
Application	IF,IHC,WB,ELISA
Reactivity	Human,Mouse,Rat

Performance

Conjugation	Unconjugated
Modification	Phospho Antibody
Isotype	IgG
Clonality	Polyclonal
Form	Liquid
Storage	Store at 4°C short term. Aliquot and store at -20°C long term. Avoid freeze/thaw cycles.
Buffer	Liquid in PBS containing 50% glycerol, 0.5% BSA and 0.02% New type preservative N.
Purification	Affinity purification

Immunogen

Gene Name	MSN
Alternative Names	MSN; Moesin; Membrane-organizing extension spike protein; RDX; Radixin; EZR; VIL2; Ezrin; Cytovillin; Villin-2; p81
Gene ID	4478/5962
SwissProt ID	P26038/P35241/P15311.The antiserum was produced against synthesized peptide derived from human Moesin/Ezrin/Radixin around the phosphorylation site of Thr558. AA range:524-573

Application

Dilution Ratio	WB 1:500 - 1:2000. IHC 1:100 - 1:300. IF 1:200 - 1:1000. ELISA: 1:5000. Not yet tested in
-----------------------	---

**Product Name: Moesin/Ezrin/Radixin (phospho Thr558)
Rabbit Polyclonal Antibody
Catalog #: APRab05035**

other applications.

Molecular Weight 67kD

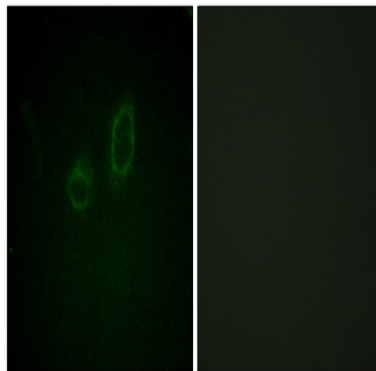
Background

Moesin (for membrane-organizing extension spike protein) is a member of the ERM family which includes ezrin and radixin. ERM proteins appear to function as cross-linkers between plasma membranes and actin-based cytoskeletons. Moesin is localized to filopodia and other membranous protrusions that are important for cell-cell recognition and signaling and for cell movement. [provided by RefSeq, Jul 2008],function:Probably involved in connections of major cytoskeletal structures to the plasma membrane.,PTM:Phosphorylation on Thr-558 is crucial for the formation of microvilli-like structures.,similarity:Contains 1 FERM domain.,subcellular location:Phosphorylated form is enriched in microvilli-like structures at apical membrane.,subunit:In resting T-cells, part of a PAG1-SLC9A3R1-MSN complex which is disrupted upon TCR activation (By similarity). Binds SLC9A3R1.,tissue specificity:In all tissues and cultured cells studied.,

Research Area

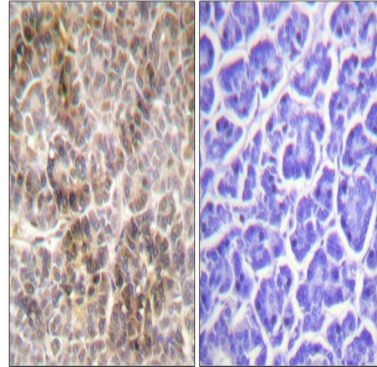
Leukocyte transendothelial migration;Regulates Actin and Cytoskeleton;

Image Data

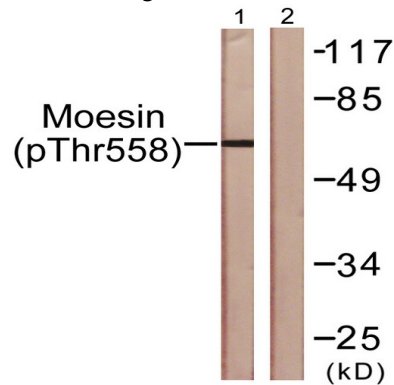


Immunofluorescence analysis of A549 cells, using Moesin/Ezrin/Radixin (Phospho-Thr558) Antibody. The picture on the right is blocked with the phospho peptide.

**Product Name: Moesin/Ezrin/Radixin (phospho Thr558)
Rabbit Polyclonal Antibody
Catalog #: APRab05035**



Immunohistochemistry analysis of paraffin-embedded human pancreas, using Moesin/Ezrin/Radixin (Phospho-Thr558) Antibody. The picture on the right is blocked with the phospho peptide.



Western blot analysis of lysates from NIH/3T3 cells, using Moesin/Ezrin/Radixin (Phospho-Thr558) Antibody. The lane on the right is blocked with the phospho peptide.

Note

For research use only.