

**Product Name: MerTK/Tyro3 (phospho Tyr749/681)
Rabbit Polyclonal Antibody
Catalog #: APRab05015**



Summary

Production Name	MerTK/Tyro3 (phospho Tyr749/681) Rabbit Polyclonal Antibody
Description	Rabbit Polyclonal Antibody
Host	Rabbit
Application	IHC,WB,
Reactivity	Human,Mouse,Rat

Performance

Conjugation	Unconjugated
Modification	Phospho Antibody
Isotype	IgG
Clonality	Polyclonal
Form	Liquid
Storage	Store at 4°C short term. Aliquot and store at -20°C long term. Avoid freeze/thaw cycles.
Buffer	Liquid in PBS containing 50% glycerol, 0.5% BSA and 0.02% New type preservative N.
Purification	Affinity purification

Immunogen

Gene Name	MERTK/TYRO3 MERTK; MER; Tyrosine-protein kinase Mer; Proto-oncogene c-Mer; Receptor tyrosine
Alternative Names	kinase MerTK; TYRO3; BYK; DTK; RSE; SKY; Tyrosine-protein kinase receptor TYRO3; Tyrosine-protein kinase DTK; Tyrosine-protein kinase RSE; Tyrosine-protein kin
Gene ID	10461/7301 Q12866/Q06418.The antiserum was produced against synthesized peptide derived
SwissProt ID	from human MER/SKY around the phosphorylation site of Tyr749/681. AA range:716- 765

Application

Dilution Ratio	WB 1:500 - 1:2000. IHC 1:100 - 1:300. ELISA: 1:10000..
-----------------------	--

**Product Name: MerTK/Tyro3 (phospho Tyr749/681)
Rabbit Polyclonal Antibody
Catalog #: APRab05015**



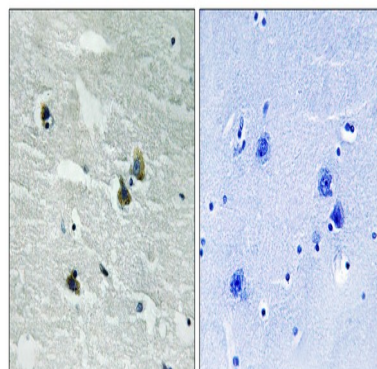
Molecular Weight 97kD

Background

This gene is a member of the MER/AXL/TYRO3 receptor kinase family and encodes a transmembrane protein with two fibronectin type-III domains, two Ig-like C2-type (immunoglobulin-like) domains, and one tyrosine kinase domain. Mutations in this gene have been associated with disruption of the retinal pigment epithelium (RPE) phagocytosis pathway and onset of autosomal recessive retinitis pigmentosa (RP). [provided by RefSeq, Jul 2008],catalytic activity:ATP + a [protein]-L-tyrosine = ADP + a [protein]-L-tyrosine phosphate.,disease:Defects in MERTK are a cause of retinitis pigmentosa (RP) [MIM:268000]. RP that leads to degeneration of retinal photoreceptor cells. Patients typically have night vision blindness and loss of midperipheral visual field. As their condition progresses, they lose their far peripheral visual field and eventually central vision as well.,function:In case of filovirus infection, seems to function as a cell entry factor.,online information:Retina International's Scientific Newsletter,similarity:Belongs to the protein kinase superfamily. Tyr protein kinase family.,similarity:Belongs to the protein kinase superfamily. Tyr protein kinase family. AXL/UFO subfamily.,similarity:Contains 1 protein kinase domain.,similarity:Contains 2 fibronectin type-III domains.,similarity:Contains 2 Ig-like C2-type (immunoglobulin-like) domains.,tissue specificity:Not expressed in normal B- and T-lymphocytes but is expressed in numerous neoplastic B- and T-cell lines.,

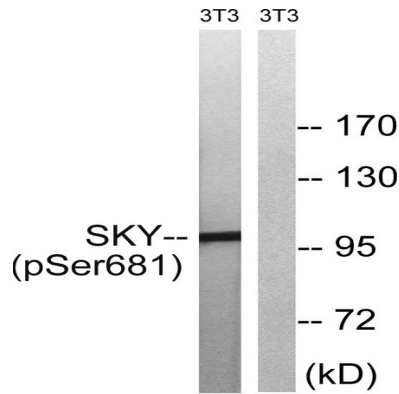
Research Area

Image Data

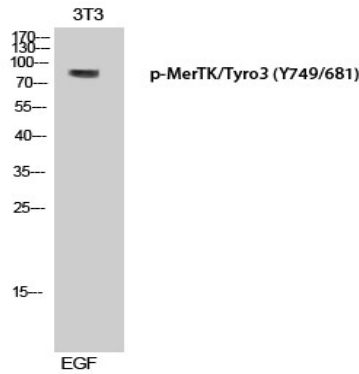


Immunohistochemistry analysis of paraffin-embedded human brain, using MER/SKY (Phospho-Tyr749/681) Antibody. The picture on the right is blocked with the phospho peptide.

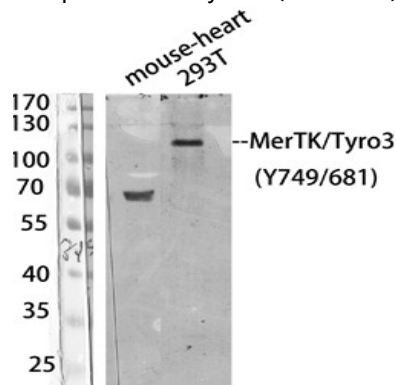
**Product Name: MerTK/Tyro3 (phospho Tyr749/681)
Rabbit Polyclonal Antibody
Catalog #: APRab05015**



Western blot analysis of lysates from NIH/3T3 cells treated with EGF 200ng/ml 5', using MER/SKY (Phospho-Tyr749/681) Antibody. The lane on the right is blocked with the phospho peptide.



Western Blot analysis of 3T3 cells using Phospho-MerTK/Tyro3 (Y749/681) Polyclonal Antibody diluted at 1: 500



Western Blot analysis of 293T/mouse-heart using Antibody diluted at 1:1000. Secondary antibody was diluted at 1:20000

Note

For research use only.