

Product Name: MEK-7 (phospho Ser271) Rabbit Polyclonal Antibody
Catalog #: APRab05012

Summary

Production Name	MEK-7 (phospho Ser271) Rabbit Polyclonal Antibody
Description	Rabbit Polyclonal Antibody
Host	Rabbit
Application	ELISA,IHC,WB,
Reactivity	Human,Mouse,Rat

Performance

Conjugation	Unconjugated
Modification	Phospho Antibody
Isotype	IgG
Clonality	Polyclonal
Form	Liquid
Storage	Store at 4°C short term. Aliquot and store at -20°C long term. Avoid freeze/thaw cycles.
Buffer	Liquid in PBS containing 50% glycerol, 0.5% BSA and 0.02% New type preservative N.
Purification	Affinity purification

Immunogen

Gene Name	MAP2K7
Alternative Names	MAP2K7; JNKK2; MEK7; MKK7; PRKMK7; SKK4; Dual specificity mitogen-activated protein kinase kinase 7; MAP kinase kinase 7; MAPKK 7; JNK-activating kinase 2; MAPK/ERK kinase 7; MEK 7; Stress-activated protein kinase kinase 4; SAPK kinase 4; S
Gene ID	5609.0
SwissProt ID	O14733.The antiserum was produced against synthesized peptide derived from human MAP2K7 around the phosphorylation site of Ser271. AA range:236-285

Application

Dilution Ratio	WB 1:500 - 1:2000 IHC 1:100 - 1:300. ELISA: 1:20000..
Molecular Weight	47kD

Product Name: MEK-7 (phospho Ser271) Rabbit Polyclonal Antibody
Catalog #: APRab05012

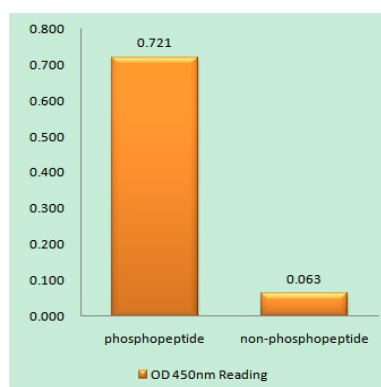
Background

The protein encoded by this gene is a dual specificity protein kinase that belongs to the MAP kinase kinase family. This kinase specifically activates MAPK8/JNK1 and MAPK9/JNK2, and this kinase itself is phosphorylated and activated by MAP kinase kinase kinases including MAP3K1/MEKK1, MAP3K2/MEKK2, MAP3K3/MEKK5, and MAP4K2/GCK. This kinase is involved in the signal transduction mediating the cell responses to proinflammatory cytokines, and environmental stresses. Alternative splicing results in multiple transcript variants. [provided by RefSeq, Jul 2014], catalytic activity: ATP + a protein = ADP + a phosphoprotein., cofactor: Magnesium., enzyme regulation: Activated by phosphorylation by specific MAP kinase kinase kinases such as MAP3K1/MEKK1, MAP3K3/MEKK3, MAP3K11/MLK3 and MAP3K12/DLK., function: Stress activated, dual specificity kinase that activates the JUN kinases MAPK8/JNK1, MAPK9/JNK2 and MAPK10/JNK3., PTM: Activated by phosphorylation on Ser/Thr., similarity: Belongs to the protein kinase superfamily. STE Ser/Thr protein kinase family. MAP kinase kinase subfamily., similarity: Contains 1 protein kinase domain., tissue specificity: Ubiquitous; with highest level of expression in skeletal muscle. Isoform 3 is found at low levels in placenta, fetal liver, and skeletal muscle.,

Research Area

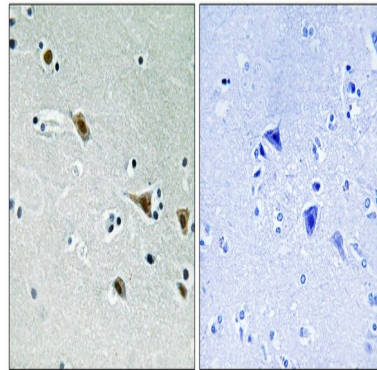
MAPK_ERK_Growth; MAPK_G_Protein; ErbB_HER; Toll_Like; T_Cell_Receptor; Fc_epsilon RI; Neurotrophin; GnRH;

Image Data

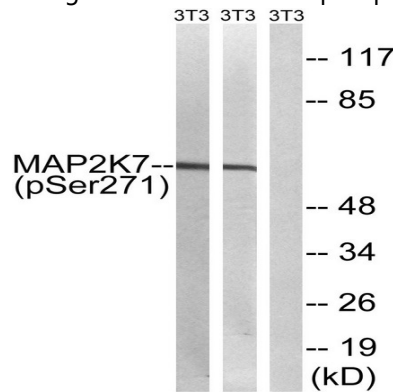


Enzyme-Linked Immunosorbent Assay (Phospho-ELISA) for Immunogen Phosphopeptide (Phospho-left) and Non-Phosphopeptide (Phospho-right), using MAP2K7 (Phospho-Ser271) Antibody

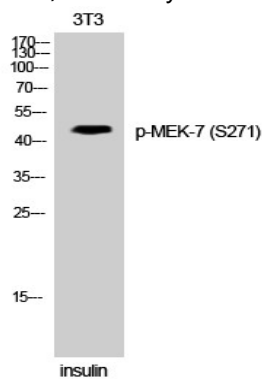
Product Name: MEK-7 (phospho Ser271) Rabbit Polyclonal Antibody
Catalog #: APRab05012



Immunohistochemistry analysis of paraffin-embedded human brain, using MAP2K7 (Phospho-Ser271) Antibody. The picture on the right is blocked with the phospho peptide.



Western blot analysis of lysates from NIH/3T3 cells treated with insulin 0.01U/ml 15 ' and NIH/3T3 cells treated with EGF 200ng/ml 30 ', using MAP2K7 (Phospho-Ser271) Antibody. The lane on the right is blocked with the phospho peptide.



Western Blot analysis of 3T3 cells using Phospho-MEK-7 (S271) Polyclonal Antibody

Note

For research use only.