

**Product Name: MEK-4 (phospho Ser80) Rabbit Polyclonal Antibody**  
**Catalog #: APRab05009**

---

## Summary

<b>Production Name</b>	MEK-4 (phospho Ser80) Rabbit Polyclonal Antibody
<b>Description</b>	Rabbit Polyclonal Antibody
<b>Host</b>	Rabbit
<b>Application</b>	IHC,WB,ELISA
<b>Reactivity</b>	Human,Mouse,Rat

## Performance

<b>Conjugation</b>	Unconjugated
<b>Modification</b>	Phospho Antibody
<b>Isotype</b>	IgG
<b>Clonality</b>	Polyclonal
<b>Form</b>	Liquid
<b>Storage</b>	Store at 4°C short term. Aliquot and store at -20°C long term. Avoid freeze/thaw cycles.
<b>Buffer</b>	Liquid in PBS containing 50% glycerol, 0.5% BSA and 0.02% New type preservative N.
<b>Purification</b>	Affinity purification

## Immunogen

<b>Gene Name</b>	MAP2K4
<b>Alternative Names</b>	MAP2K4; JNKK1; MEK4; MKK4; PRKMK4; SEK1; SERK1; SKK1; Dual specificity mitogen-activated protein kinase kinase 4; MAP kinase kinase 4; MAPKK 4; JNK-activating kinase 1; MAPK/ERK kinase 4; MEK 4; SAPK/ERK kinase 1; SEK1; Stress-activated pro
<b>Gene ID</b>	6416.0
<b>SwissProt ID</b>	P45985.The antiserum was produced against synthesized peptide derived from human SEK1/MKK4 around the phosphorylation site of Ser80. AA range:46-95

## Application

<b>Dilution Ratio</b>	WB 1:500 - 1:2000. IHC 1:100 - 1:300. ELISA: 1:5000..
<b>Molecular Weight</b>	44kD

---

**Product Name: MEK-4 (phospho Ser80) Rabbit Polyclonal Antibody**  
**Catalog #: APRab05009**

---

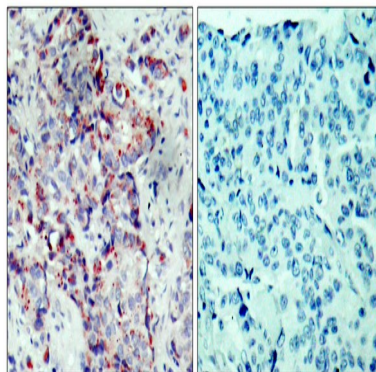
## Background

This gene encodes a member of the mitogen-activated protein kinase (MAPK) family. Members of this family act as an integration point for multiple biochemical signals and are involved in a wide variety of cellular processes such as proliferation, differentiation, transcription regulation, and development. They form a three-tiered signaling module composed of MAPKKKs, MAPKKs, and MAPKs. This protein is phosphorylated at serine and threonine residues by MAPKKKs and subsequently phosphorylates downstream MAPK targets at threonine and tyrosine residues. A similar protein in mouse has been reported to play a role in liver organogenesis. A pseudogene of this gene is located on the long arm of chromosome X. Alternative splicing results in multiple transcript variants. [provided by RefSeq, Jul 2013], catalytic activity: ATP + a protein = ADP + a phosphoprotein., function: Dual specificity kinase that activates the JUN kinases MAPK8 (JNK1) and MAPK9 (JNK2) as well as MAPK14 (p38) but not MAPK1 (ERK2) or MAPK3 (ERK1), PTM: Activated by phosphorylation on Ser/Thr by MAP kinase kinase kinases., similarity: Belongs to the protein kinase superfamily., similarity: Belongs to the protein kinase superfamily. STE Ser/Thr protein kinase family. MAP kinase kinase subfamily., similarity: Contains 1 protein kinase domain., subunit: Interacts with SPAG9., tissue specificity: Abundant expression is seen in the skeletal muscle. It is also widely expressed in other tissues.,

## Research Area

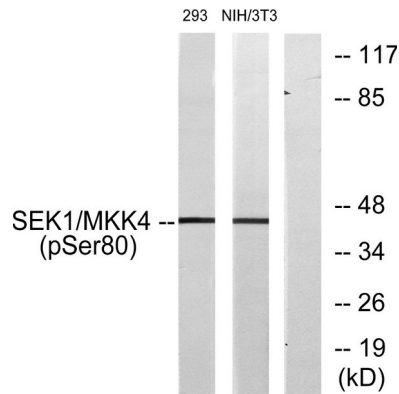
Regulates Angiogenesis; Stem cell pathway; Regulation of Actin Dynamics; Toll\_Like; Cell Growth; ErbB/HER; B Cell Receptor; MAPK\_ERK\_Growth; MAPK\_G\_Protein

## Image Data

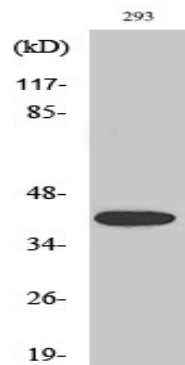


Immunohistochemistry analysis of paraffin-embedded human breast carcinoma, using SEK1/MKK4 (Phospho-Ser80) Antibody. The picture on the right is blocked with the phospho peptide.

**Product Name: MEK-4 (phospho Ser80) Rabbit  
Polyclonal Antibody  
Catalog #: APRab05009**



Western blot analysis of lysates from 293 cells and NIH/3T3 cells, using SEK1/MKK4 (Phospho-Ser80) Antibody. The lane on the right is blocked with the phospho peptide.



Western Blot analysis of various cells using Phospho-MEK-4 (S80) Polyclonal Antibody diluted at 1: 1000

## Note

For research use only.