

**Product Name: MCM4 (phospho Ser54) Rabbit Polyclonal Antibody**  
**Catalog #: APRab04986**

---

## Summary

<b>Production Name</b>	MCM4 (phospho Ser54) Rabbit Polyclonal Antibody
<b>Description</b>	Rabbit Polyclonal Antibody
<b>Host</b>	Rabbit
<b>Application</b>	WB,IHC,ELISA
<b>Reactivity</b>	Human,Mouse,Monkey

## Performance

<b>Conjugation</b>	Unconjugated
<b>Modification</b>	Phospho Antibody
<b>Isotype</b>	IgG
<b>Clonality</b>	Polyclonal
<b>Form</b>	Liquid
<b>Storage</b>	Store at 4°C short term. Aliquot and store at -20°C long term. Avoid freeze/thaw cycles.
<b>Buffer</b>	Liquid in PBS containing 50% glycerol, 0.5% BSA and 0.02% New type preservative N.
<b>Purification</b>	Affinity purification

## Immunogen

<b>Gene Name</b>	MCM4
<b>Alternative Names</b>	MCM4; CDC21; DNA replication licensing factor MCM4; CDC21 homolog; P1-CDC21
<b>Gene ID</b>	4173.0
<b>SwissProt ID</b>	P33991.The antiserum was produced against synthesized peptide derived from human MCM4 around the phosphorylation site of Ser54. AA range:20-69

## Application

<b>Dilution Ratio</b>	WB 1:500 - 1:2000. IHC 1:100 - 1:300. ELISA: 1:20000..
<b>Molecular Weight</b>	85kD

**Product Name: MCM4 (phospho Ser54) Rabbit Polyclonal Antibody**  
**Catalog #: APRab04986**

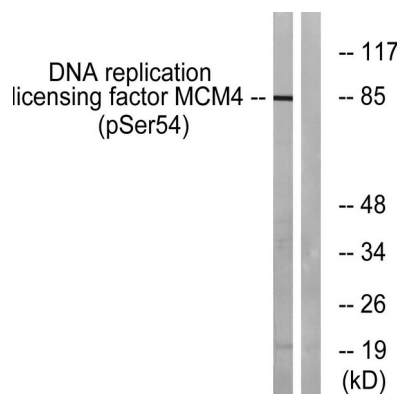
## Background

The protein encoded by this gene is one of the highly conserved mini-chromosome maintenance proteins (MCM) that are essential for the initiation of eukaryotic genome replication. The hexameric protein complex formed by MCM proteins is a key component of the pre-replication complex (pre\_RC) and may be involved in the formation of replication forks and in the recruitment of other DNA replication related proteins. The MCM complex consisting of this protein and MCM2, 6 and 7 proteins possesses DNA helicase activity, and may act as a DNA unwinding enzyme. The phosphorylation of this protein by CDC2 kinase reduces the DNA helicase activity and chromatin binding of the MCM complex. This gene is mapped to a region on the chromosome 8 head-to-head next to the PRKDC/DNA-PK, a DNA-activated protein kinase involved in the repair of DNA double-strand breaks. Alternatively spliced transcritfunction:Involved in the control of DNA replication.,similarity:Belongs to the MCM family.,similarity:Contains 1 MCM domain.,

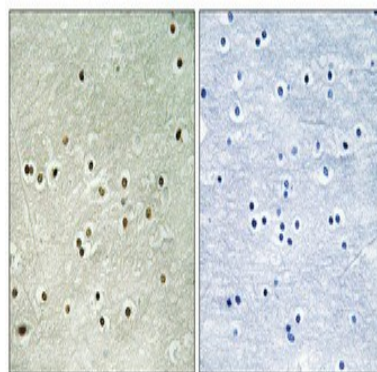
## Research Area

DNA replication;Cell\_Cycle\_G1S;Cell\_Cycle\_G2M\_DNA;

## Image Data



Western blot analysis of lysates from COS7 cells treated with nocodazole 1ug/ml 16h, using MCM4 (Phospho-Ser54) Antibody. The lane on the right is blocked with the phospho peptide.





**Product Name: MCM4 (phospho Ser54) Rabbit  
Polyclonal Antibody  
Catalog #: APRab04986**

---

pressure and temperature Tris-EDTA,pH8.0 was used for antigen retrieval. Negative control (right) obtained from antibody was pre-absorbed by immunogen peptide.

**Note**

For research use only.