

Product Name: Ku-70 (phospho Ser5) Rabbit Polyclonal Antibody
Catalog #: APRab04927



Summary

Production Name	Ku-70 (phospho Ser5) Rabbit Polyclonal Antibody
Description	Rabbit Polyclonal Antibody
Host	Rabbit
Application	IHC,WB,ELISA
Reactivity	Human,Mouse

Performance

Conjugation	Unconjugated
Modification	Phospho Antibody
Isotype	IgG
Clonality	Polyclonal
Form	Liquid
Storage	Store at 4°C short term. Aliquot and store at -20°C long term. Avoid freeze/thaw cycles.
Buffer	Liquid in PBS containing 50% glycerol, 0.5% BSA and 0.02% New type preservative N.
Purification	Affinity purification

Immunogen

Gene Name	XRCC6 XRCC6; G22P1; X-ray repair cross-complementing protein 6; 5'-deoxyribose-5-phosphate lyase Ku70; 5'-dRP lyase Ku70; 70 kDa subunit of Ku antigen; ATP-dependent DNA helicase 2 subunit 1; ATP-dependent DNA helicase II 70 kDa subunit; CTC box-
Alternative Names	
Gene ID	2547.0
SwissProt ID	P12956.The antiserum was produced against synthesized peptide derived from human Ku70 around the phosphorylation site of Ser5. AA range:1-50

Application

Dilution Ratio	WB 1:500 - 1:2000. IHC 1:100 - 1:300. ELISA: 1:5000..
-----------------------	---

Product Name: Ku-70 (phospho Ser5) Rabbit Polyclonal Antibody
Catalog #: APRab04927

Molecular Weight 70kD

Background

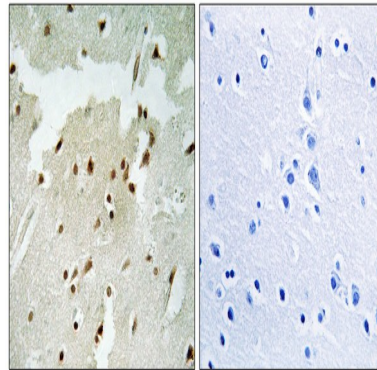
The p70/p80 autoantigen is a nuclear complex consisting of two subunits with molecular masses of approximately 70 and 80 kDa. The complex functions as a single-stranded DNA-dependent ATP-dependent helicase. The complex may be involved in the repair of nonhomologous DNA ends such as that required for double-strand break repair, transposition, and V(D)J recombination. High levels of autoantibodies to p70 and p80 have been found in some patients with systemic lupus erythematosus. [provided by RefSeq, Jul 2008],developmental stage:Expression does not increase during promyelocyte differentiation.,disease:Individuals with systemic lupus erythematosus (SLE) and related disorders produce extremely large amounts of autoantibodies to p70 and p86. Existence of a major autoantigenic epitope or epitopes on the C-terminal 190 amino acids of p70 containing the leucine repeat. The majority of autoantibodies to p70 in most sera from patients with SLE seem to be reactive with this region.,function:Single stranded DNA-dependent ATP-dependent helicase. Has a role in chromosome translocation. The DNA helicase II complex binds preferentially to fork-like ends of double-stranded DNA in a cell cycle-dependent manner. It works in the 3'-5' direction. Binding to DNA may be mediated by p70. Involved in DNA nonhomologous end joining (NHEJ) required for double-strand break repair and V(D)J recombination. The Ku p70/p86 dimer acts as regulatory subunit of the DNA-dependent protein kinase complex DNA-PK by increasing the affinity of the catalytic subunit PRKDC to DNA by 100-fold. The Ku p70/p86 dimer is probably involved in stabilizing broken DNA ends and bringing them together. The assembly of the DNA-PK complex to DNA ends is required for the NHEJ ligation step. Required for osteocalcin gene expression.,induction:In osteoblasts, by FGF2.,PTM:Phosphorylation by PRKDC may enhance helicase activity. Phosphorylation of Ser-51 does not affect DNA repair.,similarity:Belongs to the ku70 family.,similarity:Contains 1 Ku domain.,similarity:Contains 1 SAP domain.,subunit:Heterodimer of a 70 kDa and a 80 kDa subunit. The dimer associates in a DNA-dependent manner with PRKDC to form the DNA-dependent protein kinase complex DNA-PK, and with the LIG4-XRCC4 complex. The dimer also associates with NARG1, and this complex binds to the osteocalcin promoter and activates osteocalcin expression. In addition, the 70 kDa subunit binds to the osteoblast-specific transcription factors MSX2, RUNX2 and DLX5. Interacts with ELF3. Interacts with XRCC6BP1.,

Research Area

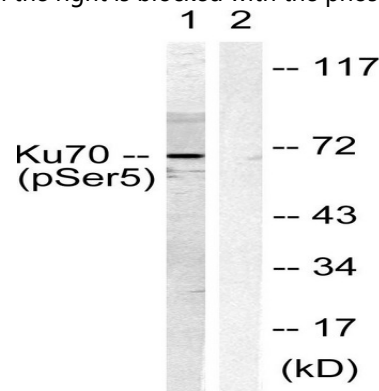
Protein_Acetylation

Image Data

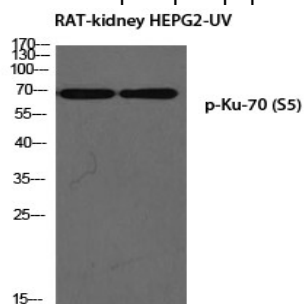
Product Name: Ku-70 (phospho Ser5) Rabbit Polyclonal Antibody
Catalog #: APRab04927



Immunohistochemistry analysis of paraffin-embedded human lung carcinoma, using Ku70 (Phospho-Ser5) Antibody. The picture on the right is blocked with the phospho peptide.



Western blot analysis of lysates from HeLa cells, using Ku70 (Phospho-Ser5) Antibody. The lane on the right is blocked with the phospho peptide.



Western blot analysis of RAT-kidney HEPG2-UV using p-Ku-70 (S5) antibody. Antibody was diluted at 1:1000

Note

For research use only.