

Product Name: KIF2C (phospho Ser95) Rabbit Polyclonal Antibody
Catalog #: APRab04920

Summary

Production Name	KIF2C (phospho Ser95) Rabbit Polyclonal Antibody
Description	Rabbit Polyclonal Antibody
Host	Rabbit
Application	ELISA,IF,WB
Reactivity	Human,Mouse

Performance

Conjugation	Unconjugated
Modification	Phospho Antibody
Isotype	IgG
Clonality	Polyclonal
Form	Liquid
Storage	Store at 4°C short term. Aliquot and store at -20°C long term. Avoid freeze/thaw cycles.
Buffer	Liquid in PBS containing 50% glycerol, 0.5% BSA and 0.02% New type preservative N.
Purification	Affinity purification

Immunogen

Gene Name	KIF2C
Alternative Names	KIF2C; KNSL6; Kinesin-like protein KIF2C; Kinesin-like protein 6; Mitotic centromere-associated kinesin; MCAK
Gene ID	11004.0
SwissProt ID	Q99661.The antiserum was produced against synthesized peptide derived from human KIF2C around the phosphorylation site of Ser95. AA range:61-110

Application

Dilution Ratio	WB 1:500-2000;IF 1:200 - 1:1000. ELISA 2000-20000
Molecular Weight	80kD

Product Name: KIF2C (phospho Ser95) Rabbit Polyclonal Antibody
Catalog #: APRab04920

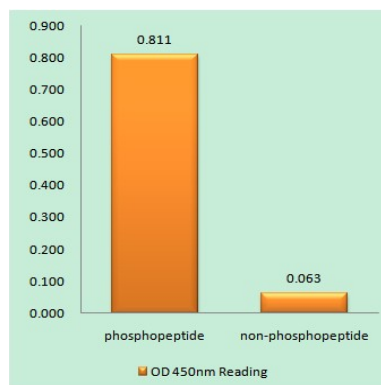


Background

kinesin family member 2C(KIF2C) Homo sapiens This gene encodes a kinesin-like protein that functions as a microtubule-dependent molecular motor. The encoded protein can depolymerize microtubules at the plus end, thereby promoting mitotic chromosome segregation. Alternative splicing results in multiple transcript variants. [provided by RefSeq, Jul 2014],function:Present throughout the cell cycle, associates with centromeres at early prophase, and remains associated with the centromere until after telophase.,PTM:Phosphorylated upon DNA damage, probably by ATM or ATR.,similarity:Belongs to the kinesin-like protein family.,similarity:Belongs to the kinesin-like protein family. MCAK/KIF2 subfamily.,similarity:Contains 1 kinesin-motor domain.,subunit:Interacts with CENPH.,tissue specificity:Expressed at high levels in thymus and testis, at low levels in small intestine, the mucosal lining of colon, and placenta, and at very low levels in spleen and ovary; expression is not detected in prostate, peripheral blood Leukocytes, heart, brain, lung, liver, skeletal muscle, kidney or pancreas.,

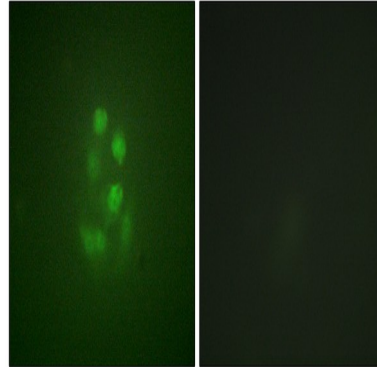
Research Area

Image Data

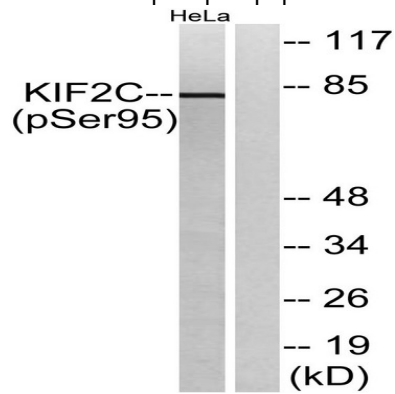


Enzyme-Linked Immunosorbent Assay (Phospho-ELISA) for Immunogen Phosphopeptide (Phospho-left) and Non-Phosphopeptide (Phospho-right) , using KIF2C (Phospho-Ser95) Antibody

Product Name: KIF2C (phospho Ser95) Rabbit Polyclonal Antibody
Catalog #: APRab04920



Immunofluorescence analysis of A549 cells, using KIF2C (Phospho-Ser95) Antibody. The picture on the right is blocked with the phospho peptide.



Western blot analysis of lysates from HeLa cells treated with TNF 10ng/ml 30 ', using KIF2C (Phospho-Ser95) Antibody. The lane on the right is blocked with the phospho peptide.

Note

For research use only.