

**Product Name: KCNQ2/3/4/5 (phospho Thr217/246/223/251) Rabbit Polyclonal Antibody**  
**Catalog #: APRab04915**

---

## Summary

|                        |   |
|------------------------|---|
| <b>Production Name</b> | KCNQ2/3/4/5 (phospho Thr217/246/223/251) Rabbit Polyclonal Antibody |
| <b>Description</b>     | Rabbit Polyclonal Antibody  |
| <b>Host</b>            | Rabbit  |
| <b>Application</b>     | IHC,ELISA   |
| <b>Reactivity</b>      | Human,Mouse,Rat   |

## Performance

|                     |  |
|---------------------|--|
| <b>Conjugation</b>  | Unconjugated   |
| <b>Modification</b> | Phospho Antibody   |
| <b>Isotype</b>      | IgG  |
| <b>Clonality</b>    | Polyclonal   |
| <b>Form</b>         | Liquid   |
| <b>Storage</b>      | Store at 4°C short term. Aliquot and store at -20°C long term. Avoid freeze/thaw cycles. |
| <b>Buffer</b>       | Liquid in PBS containing 50% glycerol, 0.5% BSA and 0.02% New type preservative N.       |
| <b>Purification</b> | Affinity purification  |

## Immunogen

|                          |  |
|--------------------------|--|
| <b>Gene Name</b>         | KCNQ2  |
| <b>Alternative Names</b> | KCNQ2; Potassium voltage-gated channel subfamily KQT member 2; KQT-like 2; Neuroblastoma-specific potassium channel subunit alpha KvLQT2; Voltage-gated potassium channel subunit Kv7.2; KCNQ3; Potassium voltage-gated channel subfamily KQT me |
| <b>Gene ID</b>           | 3785/3786/9132/56479   |
| <b>SwissProt ID</b>      | O43526/O43525/P56696/Q9NR82.The antiserum was produced against synthesized peptide derived from human Kv7.3/KCNQ3 around the phosphorylation site of Thr246. AA range:191-240  |

## Application

---

**Product Name: KCNQ2/3/4/5 (phospho Thr217/246/223/251) Rabbit Polyclonal Antibody**  
**Catalog #: APRab04915**

---

**Dilution Ratio** IHC 1:100 - 1:300. ELISA: 1:20000.

**Molecular Weight**

## Background

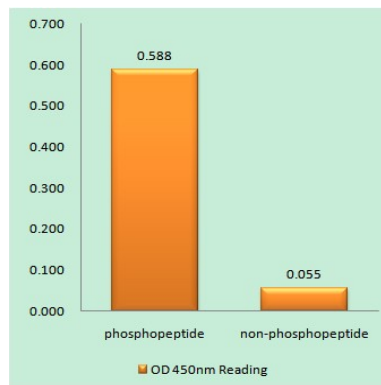
The M channel is a slowly activating and deactivating potassium channel that plays a critical role in the regulation of neuronal excitability. The M channel is formed by the association of the protein encoded by this gene and a related protein encoded by the KCNQ3 gene, both integral membrane proteins. M channel currents are inhibited by M1 muscarinic acetylcholine receptors and activated by retigabine, a novel anti-convulsant drug. Defects in this gene are a cause of benign familial neonatal convulsions type 1 (BFNC), also known as epilepsy, benign neonatal type 1 (EBN1). At least five transcript variants encoding five different isoforms have been found for this gene. [provided by RefSeq, Jul 2008],alternative products:Additional isoforms seem to exist,disease:Defects in KCNQ2 are the cause of benign neonatal epilepsy type 1 (EBN1) [MIM:121200]. Benign neonatal epilepsy is characterized by clusters of seizures occurring in the first days of life. Most patients have spontaneous remission by 12 months of age and show normal psychomotor development. The disorder is distinguished from benign familial infantile seizures by an earlier age at onset.,disease:Defects in KCNQ2 are the cause of benign neonatal epilepsy with myokymia (EBNMK) [MIM:606437]. EBNMK is a syndrome characterized by benign neonatal convulsions followed later in life by myokymia.,disease:Defects in KCNQ2 are the cause of myokymia isolated type 2 (MK2) [MIM:606437]. Myokymia is a condition characterized by spontaneous involuntary contraction of muscle fiber groups that can be observed as vermiform movement of the overlying skin. Electromyography typically shows continuous motor unit activity with spontaneous oligo- and multiplet-discharges of high intraburst frequency (myokymic discharges). Isolated spontaneous muscle twitches occur in many persons and have no grave significance.,domain:The segment S4 is probably the voltage-sensor and is characterized by a series of positively charged amino acids at every third position.,function:Probably important in the regulation of neuronal excitability. Associates with KCNQ3 to form a potassium channel with essentially identical properties to the channel underlying the native M-current, a slowly activating and deactivating potassium conductance which plays a critical role in determining the subthreshold electrical excitability of neurons as well as the responsiveness to synaptic inputs. KCNQ2/KCNQ3 current is blocked by linopirdine and XE991, and activated by the anticonvulsant retigabine. Muscarinic agonist oxotremorine-M strongly suppress KCNQ2/KCNQ3 current in cells in which cloned KCNQ2/KCNQ3 channels were coexpressed with M1 muscarinic receptors.,miscellaneous:Inclusion of isoform 6 in heteromultimers results in attenuation of potassium current. Prominent expression of isoform 6 in the developing brain may alter firing repertoires of immature neurons excitability to provide cues for proliferation rather than differentiation.,miscellaneous:Mutagenesis experiments were carried out in Xenopus oocytes by coexpression of either KCNQ2(mut) and KCNQ3 at the ratio of 1:1, or of KCNQ2(mut), KCNQ2(wt) and KCNQ3 at the ratio of 1:1:2, to mimic the situation in a heterozygous patient with BFNC1 disease.,PTM:In Xenopus oocytes KCNQ2/KCNQ3 heteromeric current can be increased by intracellular cyclic AMP, an effect that depends on phosphorylation of Ser-52 in the N-terminus region.,similarity:Belongs to the potassium channel family. KQT subfamily.,subunit:Heteromultimer with KCNQ3. May

**Product Name: KCNQ2/3/4/5 (phospho Thr217/246/223/251) Rabbit Polyclonal Antibody**  
**Catalog #: APRab04915**

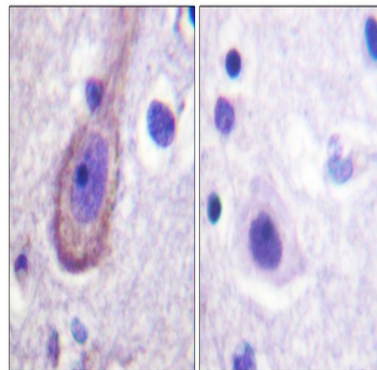
associate with KCNE2.,tissue specificity:In adult and fetal brain. Highly expressed in areas containing neuronal cell bodies, low in spinal chord and corpus callosum. Isoform 2 is preferentially expressed in differentiated neurons, whereas isoform 6 is prominent in fetal brain, undifferentiated neuroblastoma cells, and brain tumors.,

## Research Area

## Image Data



Enzyme-Linked Immunosorbent Assay (Phospho-ELISA) for Immunogen Phosphopeptide (Phospho-left) and Non-Phosphopeptide (Phospho-right) , using Kv7.3/KCNQ3 (Phospho-Thr246) Antibody



Immunohistochemistry analysis of paraffin-embedded human brain, using Kv7.3/KCNQ3 (Phospho-Thr246) Antibody. The picture on the right is blocked with the phospho peptide.

## Note

For research use only.