

Product Name: Jun D (phospho Ser255) Rabbit Polyclonal Antibody
Catalog #: APRab04913

Summary

| | |
|------------------------|---|
| Production Name | Jun D (phospho Ser255) Rabbit Polyclonal Antibody |
| Description | Rabbit Polyclonal Antibody |
| Host | Rabbit |
| Application | WB,IHC,ELISA |
| Reactivity | Human,Mouse,Rat |

Performance

| | |
|---------------------|--|
| Conjugation | Unconjugated |
| Modification | Phospho Antibody |
| Isotype | IgG |
| Clonality | Polyclonal |
| Form | Liquid |
| Storage | Store at 4°C short term. Aliquot and store at -20°C long term. Avoid freeze/thaw cycles. |
| Buffer | Liquid in PBS containing 50% glycerol, 0.5% BSA and 0.02% New type preservative N. |
| Purification | Affinity purification |

Immunogen

| | |
|--------------------------|---|
| Gene Name | JUND |
| Alternative Names | JUND; Transcription factor jun-D |
| Gene ID | 3727.0 |
| SwissProt ID | P17535.The antiserum was produced against synthesized peptide derived from human JunD around the phosphorylation site of Ser255. AA range:222-271 |

Application

| | |
|-------------------------|--|
| Dilution Ratio | WB 1:500 - 1:2000. IHC 1:100 - 1:300. ELISA: 1:20000.. |
| Molecular Weight | |

Product Name: Jun D (phospho Ser255) Rabbit Polyclonal Antibody
Catalog #: APRab04913

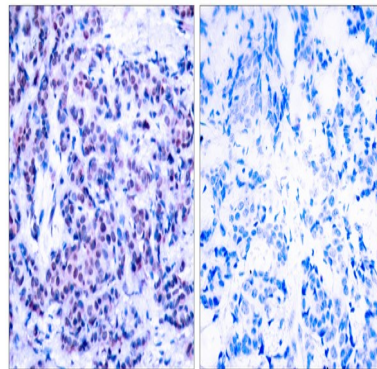
Background

The protein encoded by this intronless gene is a member of the JUN family, and a functional component of the AP1 transcription factor complex. This protein has been proposed to protect cells from p53-dependent senescence and apoptosis. Alternative translation initiation site usage results in the production of different isoforms (PMID:12105216). [provided by RefSeq, Nov 2013],function: Binds an AP-1 site and upon cotransfection stimulates the activity of a promoter that bears an AP-1 site.,similarity: Belongs to the bZIP family. Jun subfamily.,similarity: Contains 1 bZIP domain.,subunit: Binds DNA as a dimer.,

Research Area

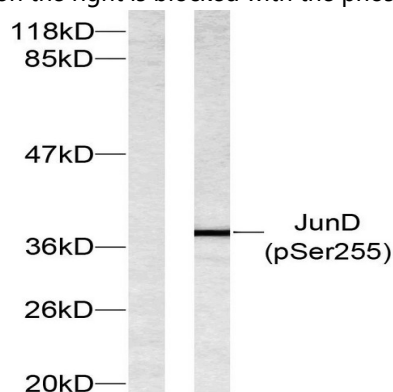
MAPK_ERK_Growth;MAPK_G_Protein;

Image Data



Immunohistochemistry analysis of paraffin-embedded human breast carcinoma, using JunD (Phospho-Ser255) Antibody.

The picture on the right is blocked with the phospho peptide.



Western blot analysis of lysates from 293 cells treated with Forskolin, using JunD (Phospho-Ser255) Antibody. The lane on the left is blocked with the phospho peptide.



**Product Name: Jun D (phospho Ser255) Rabbit
Polyclonal Antibody
Catalog #: APRab04913**

Note

For research use only.