

Product Name: IRF-3 (phospho Ser385) Rabbit Polyclonal Antibody
Catalog #: APRab04868

Summary

Production Name	IRF-3 (phospho Ser385) Rabbit Polyclonal Antibody
Description	Rabbit Polyclonal Antibody
Host	Rabbit
Application	ELISA,IF,IHC,WB
Reactivity	Human,Rat,Mouse

Performance

Conjugation	Unconjugated
Modification	Phospho Antibody
Isotype	IgG
Clonality	Polyclonal
Form	Liquid
Storage	Store at 4°C short term. Aliquot and store at -20°C long term. Avoid freeze/thaw cycles.
Buffer	Liquid in PBS containing 50% glycerol, 0.5% BSA and 0.02% New type preservative N.
Purification	Affinity purification

Immunogen

Gene Name	IRF3
Alternative Names	IRF3; Interferon regulatory factor 3; IRF-3
Gene ID	3661.0
SwissProt ID	Q14653.The antiserum was produced against synthesized peptide derived from human IRF-3 around the phosphorylation site of Ser385. AA range:351-400

Application

Dilution Ratio	WB 1:500 - 1:2000. IHC 1:100 - 1:300. IF 1:200 - 1:1000. ELISA: 1:10000. Not yet tested in other applications.
Molecular Weight	48-55kd

Product Name: IRF-3 (phospho Ser385) Rabbit Polyclonal Antibody
Catalog #: APRab04868

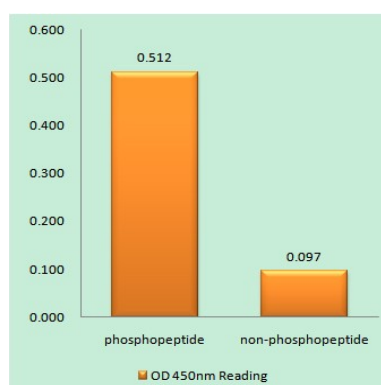
Background

This gene encodes a member of the interferon regulatory transcription factor (IRF) family. The encoded protein is found in an inactive cytoplasmic form that upon serine/threonine phosphorylation forms a complex with CREBBP. This complex translocates to the nucleus and activates the transcription of interferons alpha and beta, as well as other interferon-induced genes. Alternatively spliced transcript variants encoding multiple isoforms have been observed for this gene. [provided by RefSeq, Nov 2011],function:Mediates interferon-stimulated response element (ISRE) promoter activation. Functions as a molecular switch for antiviral activity. DsRNA generated during the course of a viral infection leads to IRF3 phosphorylation on the C-terminal serine/threonine cluster. This induces a conformational change, leading to its dimerization, nuclear localization and association with CREB binding protein (CREBBP) to form dsRNA-activated factor 1 (DRAFI), a complex which activates the transcription of genes under the control of ISRE. The complex binds to the IE and PRDIII regions on the IFN-alpha and IFN-beta promoters respectively. IRF-3 does not have any transcription activation domains.,PTM:Constitutively phosphorylated on many serines residues. C-terminal serine/threonine cluster is phosphorylated in response of induction by IKBKE and TBK1. Ser-385 and Ser-386 may be specifically phosphorylated in response to induction. An alternate model propose that the five serine/threonine residues between 396 and 405 are phosphorylated in response to a viral infection. Phosphorylation, and subsequent activation of IRF3 is inhibited by vaccinia virus protein E3.,similarity:Belongs to the IRF family.,similarity:Contains 1 tryptophan pentad repeat DNA-binding domain.,subcellular location:Shuttles between cytoplasmic and nuclear compartments, with export being the prevailing effect. When activated, IRF3 interaction with CREBBP prevents its export to the cytoplasm.,subunit:Homodimer; phosphorylation-induced. Interacts with CREBBP. May interact with MAVS. Interacts with IKBKE and TBK1. Interacts with TICAM1 and TICAM2. Interacts with rotavirus A NSP1 (via C-terminus); this interaction leads to the proteasome-dependent degradation of IRF3.,tissue specificity:Expressed constitutively in a variety of tissues.,

Research Area

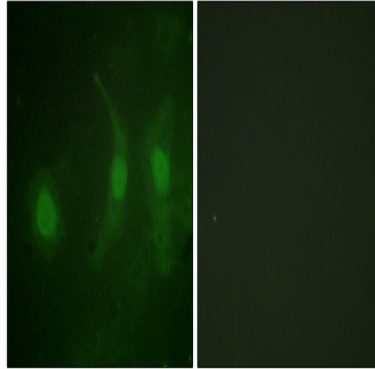
Toll_Like;RIG-I-like receptor;Cytosolic DNA-sensing pathway;

Image Data

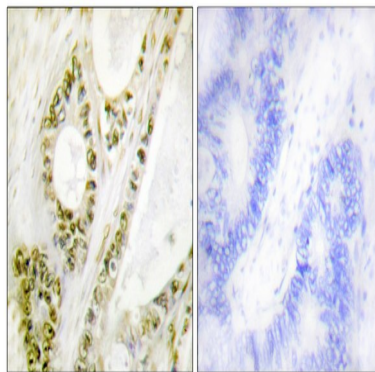


Product Name: IRF-3 (phospho Ser385) Rabbit Polyclonal Antibody
Catalog #: APRab04868

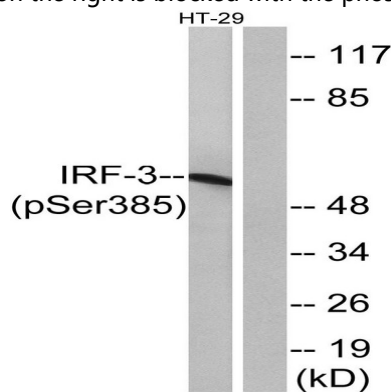
Enzyme-Linked Immunosorbent Assay (Phospho-ELISA) for Immunogen Phosphopeptide (Phospho-left) and Non-Phosphopeptide (Phospho-right), using IRF-3 (Phospho-Ser385) Antibody



Immunofluorescence analysis of HeLa cells, using IRF-3 (Phospho-Ser385) Antibody. The picture on the right is blocked with the phospho peptide.

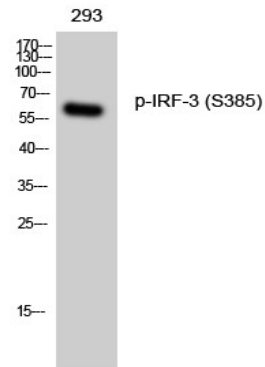


Immunohistochemistry analysis of paraffin-embedded human colon carcinoma, using IRF-3 (Phospho-Ser385) Antibody. The picture on the right is blocked with the phospho peptide.



Western blot analysis of lysates from HT29 cells treated with INSULIN 0.01U/ML 15', using IRF-3 (Phospho-Ser385) Antibody. The lane on the right is blocked with the phospho peptide.

**Product Name: IRF-3 (phospho Ser385) Rabbit
Polyclonal Antibody
Catalog #: APRab04868**



Western Blot analysis of 293 cells using Phospho-IRF-3 (S385) Polyclonal Antibody

Note

For research use only.