

Product Name: IL-8R β (phospho Ser347) Rabbit Polyclonal Antibody
Catalog #: APRab04843

Summary

Production Name	IL-8R β (phospho Ser347) Rabbit Polyclonal Antibody
Description	Rabbit Polyclonal Antibody
Host	Rabbit
Application	WB,IHC,IF,ELISA
Reactivity	Human,Mouse

Performance

Conjugation	Unconjugated
Modification	Phospho Antibody
Isotype	IgG
Clonality	Polyclonal
Form	Liquid
Storage	Store at 4°C short term. Aliquot and store at -20°C long term. Avoid freeze/thaw cycles.
Buffer	Liquid in PBS containing 50% glycerol, 0.5% BSA and 0.02% New type preservative N.
Purification	Affinity purification

Immunogen

Gene Name	CXCR2 CXCR2; IL8RB; C-X-C chemokine receptor type 2; CXC-R2; CXCR-2; CDw128b;
Alternative Names	GRO/MGSA receptor; High affinity interleukin-8 receptor B; IL-8R B; IL-8 receptor type 2; CD antigen CD182
Gene ID	3579.0
SwissProt ID	P25025.The antiserum was produced against synthesized peptide derived from human IL-8R beta/CDw128 beta around the phosphorylation site of Ser347. AA range:311-360

Application

Dilution Ratio	WB 1:500 - 1:2000. IHC 1:100 - 1:300. IF 1:200 - 1:1000. ELISA: 1:10000. Not yet tested in
-----------------------	--

Product Name: IL-8R β (phospho Ser347) Rabbit Polyclonal Antibody
Catalog #: APRab04843

other applications.

Molecular Weight 48kD

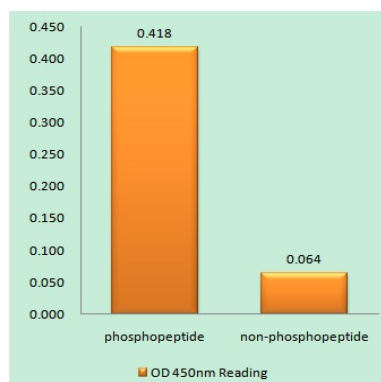
Background

C-X-C motif chemokine receptor 2(CXCR2) Homo sapiens The protein encoded by this gene is a member of the G-protein-coupled receptor family. This protein is a receptor for interleukin 8 (IL8). It binds to IL8 with high affinity, and transduces the signal through a G-protein activated second messenger system. This receptor also binds to chemokine (C-X-C motif) ligand 1 (CXCL1/MGSA), a protein with melanoma growth stimulating activity, and has been shown to be a major component required for serum-dependent melanoma cell growth. This receptor mediates neutrophil migration to sites of inflammation. The angiogenic effects of IL8 in intestinal microvascular endothelial cells are found to be mediated by this receptor. Knockout studies in mice suggested that this receptor controls the positioning of oligodendrocyte precursors in developing spinal cord by arresting their migration. This gene, IL8RA, a gene encoding another high affinity IL8 receptor, asfunction:Receptor for interleukin-8 which is a powerful neutrophil chemotactic factor. Binding of IL-8 to the receptor causes activation of neutrophils. This response is mediated via a G-protein that activates a phosphatidylinositol-calcium second messenger system. Binds to IL-8 with high affinity. Also binds with high affinity to CXCL3, GRO/MGSA and NAP-2.,online information:CXC chemokine receptors entry,PTM:Phosphorylated upon ligand binding; which is required for desensitization.,similarity:Belongs to the G-protein coupled receptor 1 family.,

Research Area

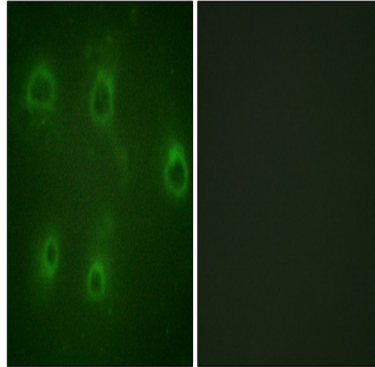
Cytokine-cytokine receptor interaction;Chemokine;Endocytosis;Epithelial cell signaling in Helicobacter pylori infection;

Image Data

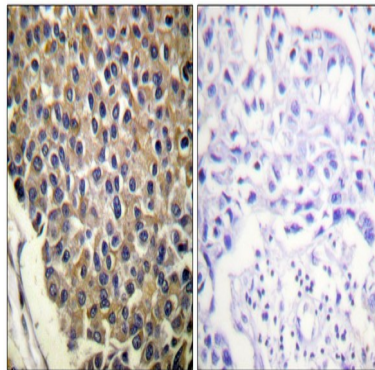


Enzyme-Linked Immunosorbent Assay (Phospho-ELISA) for Immunogen Phosphopeptide (Phospho-left) and Non-Phosphopeptide (Phospho-right) , using IL-8R beta/CDw128 beta (Phospho-Ser347) Antibody

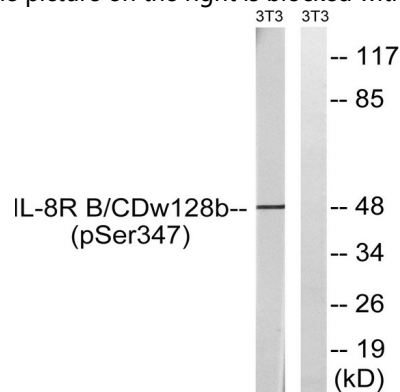
Product Name: IL-8R β (phospho Ser347) Rabbit Polyclonal Antibody
Catalog #: APRab04843



Immunofluorescence analysis of COS7 cells, using IL-8R beta/CDw128 beta (Phospho-Ser347) Antibody. The picture on the right is blocked with the phospho peptide.

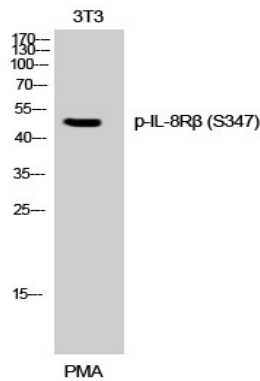


Immunohistochemistry analysis of paraffin-embedded human breast carcinoma, using IL-8R beta/CDw128 beta (Phospho-Ser347) Antibody. The picture on the right is blocked with the phospho peptide.

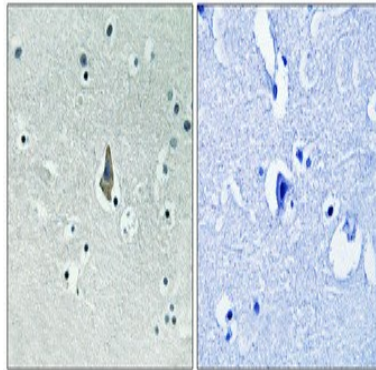


Western blot analysis of lysates from NIH/3T3 cells treated with PMA 125ng/ml 30 ', using IL-8R beta/CDw128 beta (Phospho-Ser347) Antibody. The lane on the right is blocked with the phospho peptide.

Product Name: IL-8R β (phospho Ser347) Rabbit Polyclonal Antibody
Catalog #: APRab04843



Western Blot analysis of 3T3 cells using Phospho-IL-8R β (S347) Polyclonal Antibody



Immunohistochemical analysis of paraffin-embedded Human brain. Antibody was diluted at 1:100 (4°, overnight) . High-pressure and temperature Tris-EDTA, pH 8.0 was used for antigen retrieval. Negative control (right) obtained from antibody was pre-absorbed by immunogen peptide.

Note

For research use only.