

Product Name: IL-1RI (phospho Tyr496) Rabbit Polyclonal Antibody
Catalog #: APRab04836

Summary

| | |
|------------------------|--|
| Production Name | IL-1RI (phospho Tyr496) Rabbit Polyclonal Antibody |
| Description | Rabbit Polyclonal Antibody |
| Host | Rabbit |
| Application | IHC,ELISA |
| Reactivity | Human,Mouse,Rat |

Performance

| | |
|---------------------|--|
| Conjugation | Unconjugated |
| Modification | Phospho Antibody |
| Isotype | IgG |
| Clonality | Polyclonal |
| Form | Liquid |
| Storage | Store at 4°C short term. Aliquot and store at -20°C long term. Avoid freeze/thaw cycles. |
| Buffer | Liquid in PBS containing 50% glycerol, 0.5% BSA and 0.02% New type preservative N. |
| Purification | Affinity purification |

Immunogen

| | |
|--------------------------|--|
| Gene Name | IL1R1 IL1R1; IL1R; IL1RA; IL1RT1; Interleukin-1 receptor type 1; IL-1R-1; IL-1RT-1; IL-1RT1; |
| Alternative Names | CD121 antigen-like family member A; Interleukin-1 receptor alpha; IL-1R-alpha; Interleukin-1 receptor type I; p80; CD antigen CD121a |
| Gene ID | 3554.0 |
| SwissProt ID | P14778.The antiserum was produced against synthesized peptide derived from human IL-1Ralpha/CD121alpha around the phosphorylation site of Tyr496. AA range:471-520 |

Application

| | |
|-------------------------|--------------------------------|
| Dilution Ratio | IHC 1:100-1:300 ELISA: 1:10000 |
| Molecular Weight | 65kD |

**Product Name: IL-1RI (phospho Tyr496) Rabbit
Polyclonal Antibody
Catalog #: APRab04836**

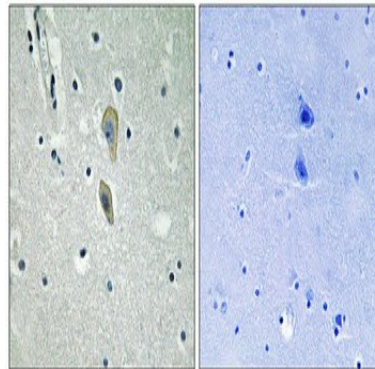
Background

This gene encodes a cytokine receptor that belongs to the interleukin-1 receptor family. The encoded protein is a receptor for interleukin-1 alpha, interleukin-1 beta, and interleukin-1 receptor antagonist. It is an important mediator involved in many cytokine-induced immune and inflammatory responses. This gene is located in a cluster of related cytokine receptor genes on chromosome 2q12. [provided by RefSeq, Dec 2013],function:Receptor for interleukin-1 alpha (IL-1A), beta (IL-1B), and interleukin-1 receptor antagonist protein (IL-1RA). Binding to the agonist leads to the activation of NF-kappa-B. Signaling involves formation of a ternary complex containing IL1RAP, TOLLIP, MYD88, and IRAK1 or IRAK2.,similarity:Belongs to the interleukin-1 receptor family.,similarity:Contains 1 TIR domain.,similarity:Contains 3 Ig-like C2-type (immunoglobulin-like) domains.,subunit:Binds IL1RAP.,

Research Area

MAPK_ERK_Growth;MAPK_G_Protein;Cytokine-cytokine receptor
interaction;Apoptosis_Inhibition;Apoptosis_Mitochondrial;Apoptosis_Overview;Hematopoietic cell lineage;

Image Data



Immunohistochemical analysis of paraffin-embedded Human brain. Antibody was diluted at 1:100 (4°,overnight) . High-pressure and temperature Tris-EDTA,pH8.0 was used for antigen retrieval. Negative contrl (right) obtaned from antibody was pre-absorbed by immunogen peptide.

Note

For research use only.