

Product Name: IL-13R α 1 (phospho Tyr405) Rabbit Polyclonal Antibody
Catalog #: APRab04835

Summary

Production Name	IL-13R α 1 (phospho Tyr405) Rabbit Polyclonal Antibody
Description	Rabbit Polyclonal Antibody
Host	Rabbit
Application	ELISA,IF,WB,
Reactivity	Human,Mouse,Rat

Performance

Conjugation	Unconjugated
Modification	Phospho Antibody
Isotype	IgG
Clonality	Polyclonal
Form	Liquid
Storage	Store at 4°C short term. Aliquot and store at -20°C long term. Avoid freeze/thaw cycles.
Buffer	Liquid in PBS containing 50% glycerol, 0.5% BSA and 0.02% New type preservative N.
Purification	Affinity purification

Immunogen

Gene Name	IL13RA1 IL13RA1; IL13R; IL13RA; Interleukin-13 receptor subunit alpha-1; IL-13 receptor subunit
Alternative Names	alpha-1; IL-13R subunit alpha-1; IL-13R-alpha-1; IL-13RA1; Cancer/testis antigen 19; CT19; CD antigen CD213a1
Gene ID	3597.0
SwissProt ID	P78552.The antiserum was produced against synthesized peptide derived from human IL-13R alpha1 around the phosphorylation site of Tyr405. AA range:371-420

Application

Dilution Ratio	WB 1:500 - 1:2000 IF 1:200 - 1:1000. ELISA: 1:10000. Not yet tested in other
-----------------------	---

Product Name: IL-13R α 1 (phospho Tyr405) Rabbit Polyclonal Antibody
Catalog #: APRab04835

applications.

Molecular Weight 49kD

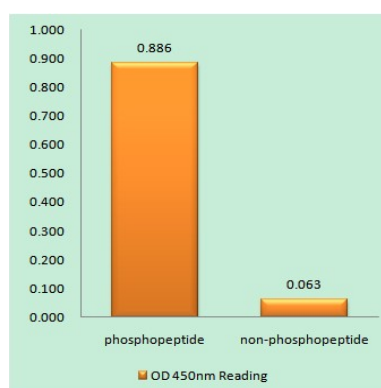
Background

The protein encoded by this gene is a subunit of the interleukin 13 receptor. This subunit forms a receptor complex with IL4 receptor alpha, a subunit shared by IL13 and IL4 receptors. This subunit serves as a primary IL13-binding subunit of the IL13 receptor, and may also be a component of IL4 receptors. This protein has been shown to bind tyrosine kinase TYK2, and thus may mediate the signaling processes that lead to the activation of JAK1, STAT3 and STAT6 induced by IL13 and IL4. [provided by RefSeq, Jul 2008],domain:The box 1 motif is required for JAK interaction and/or activation.,domain:The WSXWS motif appears to be necessary for proper protein folding and thereby efficient intracellular transport and cell-surface receptor binding.,function:Binds IL13 with a low affinity. Together with IL4R-alpha can form a functional receptor for IL13. Also serves as an alternate accessory protein to the common cytokine receptor gamma chain for IL4 signaling, but cannot replace the function of gamma C in allowing enhanced IL2 binding activity.,similarity:Belongs to the type I cytokine receptor family. Type 5 subfamily.,subunit:Interleukin 13 receptor is a complex of IL4R, IL13RA1, and possibly other components. Interacts with TRAF3IP1.,tissue specificity:Ubiquitous. Highest levels in heart, liver, skeletal muscle and ovary; lowest levels in brain, lung and kidney. Also found in B-cells, T-cells and endothelial cells.,

Research Area

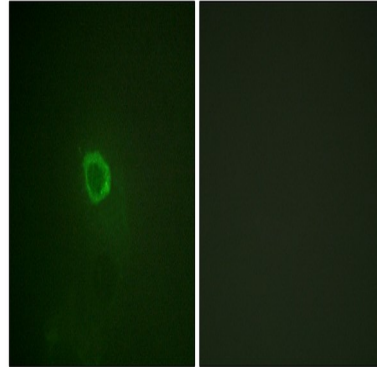
Cytokine-cytokine receptor interaction;Jak_STAT;

Image Data

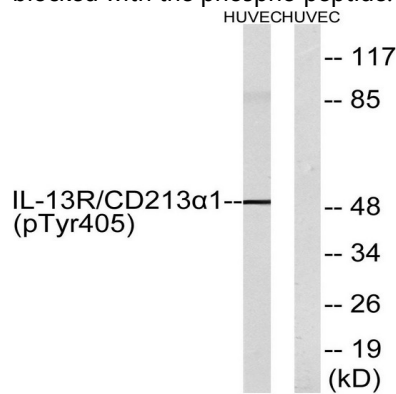


Enzyme-Linked Immunosorbent Assay (Phospho-ELISA) for Immunogen Phosphopeptide (Phospho-left) and Non-Phosphopeptide (Phospho-right) , using IL-13R alpha1 (Phospho-Tyr405) Antibody

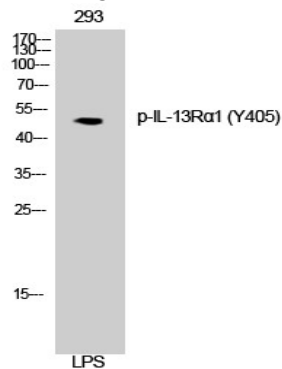
Product Name: IL-13R α 1 (phospho Tyr405) Rabbit Polyclonal Antibody
Catalog #: APRab04835



Immunofluorescence analysis of HepG2 cells, using IL-13R alpha1 (Phospho-Tyr405) Antibody. The picture on the right is blocked with the phospho peptide.



Western blot analysis of lysates from HUVEC cells treated with serum 20% 15', using IL-13R alpha1 (Phospho-Tyr405) Antibody. The lane on the right is blocked with the phospho peptide.



Western Blot analysis of 3T3 cells using Phospho-IL-13R α 1 (Y405) Polyclonal Antibody

Note

For research use only.