

Product Name: IFN- γ R α (phospho Tyr457) Rabbit Polyclonal Antibody
Catalog #: APRab04814

Summary

Production Name	IFN- γ R α (phospho Tyr457) Rabbit Polyclonal Antibody
Description	Rabbit Polyclonal Antibody
Host	Rabbit
Application	ELISA,IF,IHC,WB
Reactivity	Human,Mouse,Rat,Monkey

Performance

Conjugation	Unconjugated
Modification	Phospho Antibody
Isotype	IgG
Clonality	Polyclonal
Form	Liquid
Storage	Store at 4°C short term. Aliquot and store at -20°C long term. Avoid freeze/thaw cycles.
Buffer	Liquid in PBS containing 50% glycerol, 0.5% BSA and 0.02% New type preservative N.
Purification	Affinity purification

Immunogen

Gene Name	IFNGR1
Alternative Names	IFNGR1; Interferon gamma receptor 1; IFN-gamma receptor 1; IFN-gamma-R1; CDw119; CD antigen CD119
Gene ID	3459.0
SwissProt ID	P15260.The antiserum was produced against synthesized peptide derived from human Interferon-gamma Receptor alpha around the phosphorylation site of Tyr457. AA range:431-480

Application

Dilution Ratio	WB 1:500 - 1:2000. IF 1:200 - 1:1000. ELISA: 1:20000. IHC 1:100 - 1:300.
Molecular Weight	83kD

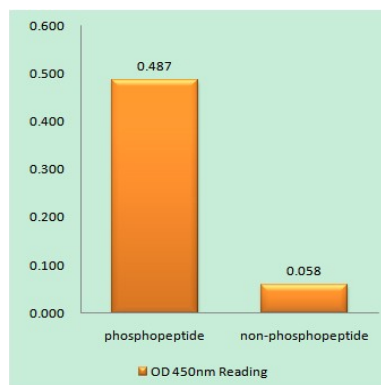
Background

This gene (IFNGR1) encodes the ligand-binding chain (alpha) of the gamma interferon receptor. Human interferon-gamma receptor is a heterodimer of IFNGR1 and IFNGR2. A genetic variation in IFNGR1 is associated with susceptibility to *Helicobacter pylori* infection. In addition, defects in IFNGR1 are a cause of mendelian susceptibility to mycobacterial disease, also known as familial disseminated atypical mycobacterial infection. [provided by RefSeq, Jul 2008],disease:Defects in IFNGR1 are a cause of mendelian susceptibility to mycobacterial disease (MSMD) [MIM:209950]; also known as familial disseminated atypical mycobacterial infection. This rare condition confers predisposition to illness caused by moderately virulent mycobacterial species, such as *Bacillus Calmette-Guerin* (BCG) vaccine and environmental non-tuberculous mycobacteria, and by the more virulent *Mycobacterium tuberculosis*. Other microorganisms rarely cause severe clinical disease in individuals with susceptibility to mycobacterial infections, with the exception of *Salmonella* which infects less than 50% of these individuals. The pathogenic mechanism underlying MSMD is the impairment of interferon-gamma mediated immunity whose severity determines the clinical outcome. Some patients die of overwhelming mycobacterial disease with lepromatous-like lesions in early childhood, whereas others develop, later in life, disseminated but curable infections with tuberculoid granulomas. MSMD is a genetically heterogeneous disease with autosomal recessive, autosomal dominant or X-linked inheritance.,function:Receptor for interferon gamma. Two receptors bind one interferon gamma dimer.,online information:IFNGR1 mutation db,polymorphism:A genetic variation in the IFNGR1 gene is associated with susceptibility to *Helicobacter pylori* infection [MIM:600263],.PTM:Phosphorylated at Ser/Thr residues.,similarity:Belongs to the type II cytokine receptor family.,similarity:Contains 2 fibronectin type-III domains.,similarity:Contains 2 Ig-like C2-type (immunoglobulin-like) domains.,subunit:Monomer.,

Research Area

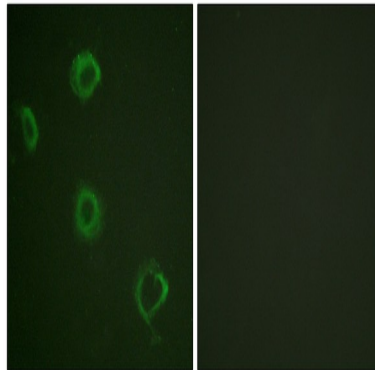
Cytokine-cytokine receptor interaction;Jak_STAT;Natural killer cell mediated cytotoxicity;

Image Data

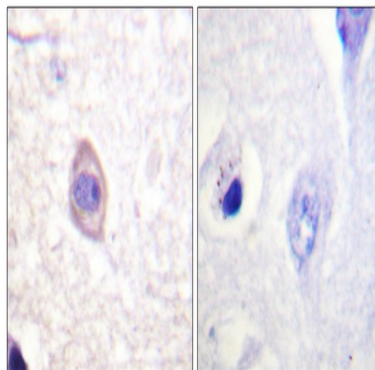


Product Name: IFN- γ R α (phospho Tyr457) Rabbit Polyclonal Antibody
Catalog #: APRab04814

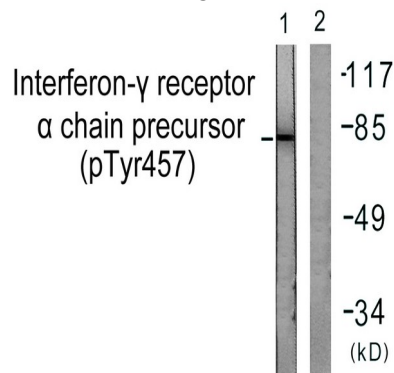
Enzyme-Linked Immunosorbent Assay (Phospho-ELISA) for Immunogen Phosphopeptide (Phospho-left) and Non-Phosphopeptide (Phospho-right) , using Interferon-gamma Receptor alpha (Phospho-Tyr457) Antibody



Immunofluorescence analysis of A549 cells, using Interferon-gamma Receptor alpha (Phospho-Tyr457) Antibody. The picture on the right is blocked with the phospho peptide.



Immunohistochemistry analysis of paraffin-embedded human brain, using Interferon-gamma Receptor alpha (Phospho-Tyr457) Antibody. The picture on the right is blocked with the phospho peptide.



Western blot analysis of lysates from COS7 cells, using Interferon-gamma Receptor alpha (Phospho-Tyr457) Antibody. The lane on the right is blocked with the phospho peptide.

**Product Name: IFN- γ R α (phospho Tyr457) Rabbit
Polyclonal Antibody
Catalog #: APRab04814**



Note

For research use only.