

**Product Name: HSF1 (phospho Thr142) Rabbit Polyclonal Antibody**  
**Catalog #: APRab04799**

---

## Summary

<b>Production Name</b>	HSF1 (phospho Thr142) Rabbit Polyclonal Antibody
<b>Description</b>	Rabbit Polyclonal Antibody
<b>Host</b>	Rabbit
<b>Application</b>	IHC,ELISA
<b>Reactivity</b>	Human,Mouse

## Performance

<b>Conjugation</b>	Unconjugated
<b>Modification</b>	Phospho Antibody
<b>Isotype</b>	IgG
<b>Clonality</b>	Polyclonal
<b>Form</b>	Liquid
<b>Storage</b>	Store at 4°C short term. Aliquot and store at -20°C long term. Avoid freeze/thaw cycles.
<b>Buffer</b>	Liquid in PBS containing 50% glycerol, 0.5% BSA and 0.02% New type preservative N.
<b>Purification</b>	Affinity purification

## Immunogen

<b>Gene Name</b>	HSF1
<b>Alternative Names</b>	HSF1; HSTF1; Heat shock factor protein 1; HSF 1; Heat shock transcription factor 1; HSTF 1
<b>Gene ID</b>	3297.0
<b>SwissProt ID</b>	Q00613.The antiserum was produced against synthesized peptide derived from human HSF1 around the phosphorylation site of Thr142. AA range:108-157

## Application

<b>Dilution Ratio</b>	IHC 1:100 - 1:300. ELISA: 1:20000..
<b>Molecular Weight</b>	

**Product Name: HSF1 (phospho Thr142) Rabbit  
Polyclonal Antibody  
Catalog #: APRab04799**

---

## Background

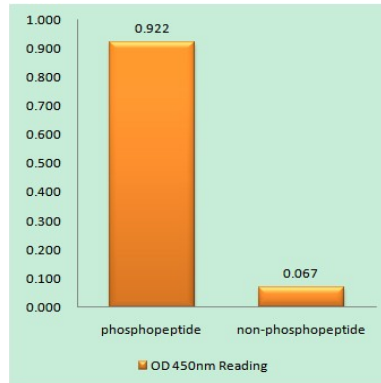
heat shock transcription factor 1(HSF1) Homo sapiens The product of this gene is a transcription factor that is rapidly induced after temperature stress and binds heat shock promoter elements (HSE). This protein plays a role in the regulation of lifespan. Expression of this gene is repressed by phosphorylation, which promotes binding by heat shock protein 90. [provided by RefSeq, Aug 2016],function:DNA-binding protein that specifically binds heat shock promoter elements (HSE) and activates transcription. In higher eukaryotes, HSF is unable to bind to the HSE unless the cells are heat shocked.,PTM:Phosphorylated on multiple serine residues, a subset of which are involved in stress-related regulation of transcription activation. Constitutive phosphorylation represses transcriptional activity at normal temperatures. Levels increase on specific residues heat-shock and enhance HSF1 transactivation activity. Phosphorylation on Ser-307 derepresses activation on heat-stress and in combination with Ser-303 phosphorylation appears to be involved in recovery after heat-stress. Phosphorylated on Ser-230 by CAMK2, in vitro. Cadmium also enhances phosphorylation at this site. Phosphorylation on Ser-303 is a prerequisite for HSF1 sumoylation. Phosphorylation on Ser-121 inhibits transactivation and promotes HSP90 binding. Phosphorylation on Thr-142 also mediates transcriptional activity induced by heat.,PTM:Sumoylated BY SUMO1 AND SUMO2 on heat-shock. Heat-inducible sumoylation occurs after 15 min of heat-shock, after which levels decrease and at 4 hours, levels return to control levels. Sumoylation has no effect on HSE binding nor on transcriptional activity. Phosphorylation on Ser-303 is a prerequisite for sumoylation.,similarity:Belongs to the HSF family.,subcellular location:Cytoplasmic during normal growth. On activation, translocates to nuclear stress granules. Colocalizes with SUMO1 in nuclear stress granules.,subunit:Monomer. Under normal conditions, interacts with HSP90AA1 in the HSP90 multichaperone complex; the interaction prevents trimerization and activation of HSF1. On activation by heat-stress or by other factors such as metal ions, HSF1 is released from the complex, homotrimerizes, is hyperphosphorylated and translocated to the nucleus where, subsequently, it can activate transcription. Binds the complex through the regulatory domain. Interacts with SYMPK and CSTF2 in heat-stressed cells. Interacts with FKBP4 in the HSP90 multichaperone complex; the interaction is independent of the phosphorylation state of HSF1. Interacts with MAPKAPK2.,

## Research Area

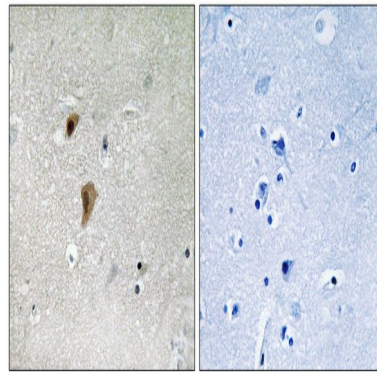
SAPK\_JNK

## Image Data

**Product Name: HSF1 (phospho Thr142) Rabbit Polyclonal Antibody**  
**Catalog #: APRab04799**



Enzyme-Linked Immunosorbent Assay (Phospho-ELISA) for Immunogen Phosphopeptide (Phospho-left) and Non-Phosphopeptide (Phospho-right), using HSF1 (Phospho-Thr142) Antibody



Immunohistochemistry analysis of paraffin-embedded human brain, using HSF1 (Phospho-Thr142) Antibody. The picture on the right is blocked with the phospho peptide.

## Note

For research use only.