

**Product Name: HBP1 (phospho Ser402) Rabbit Polyclonal Antibody**  
**Catalog #: APRab04757**

---

## Summary

<b>Production Name</b>	HBP1 (phospho Ser402) Rabbit Polyclonal Antibody
<b>Description</b>	Rabbit Polyclonal Antibody
<b>Host</b>	Rabbit
<b>Application</b>	WB,IHC,
<b>Reactivity</b>	Human,Rat,Mouse

## Performance

<b>Conjugation</b>	Unconjugated
<b>Modification</b>	Phospho Antibody
<b>Isotype</b>	IgG
<b>Clonality</b>	Polyclonal
<b>Form</b>	Liquid
<b>Storage</b>	Store at 4°C short term. Aliquot and store at -20°C long term. Avoid freeze/thaw cycles.
<b>Buffer</b>	Liquid in PBS containing 50% glycerol, 0.5% BSA and 0.02% New type preservative N.
<b>Purification</b>	Affinity purification

## Immunogen

<b>Gene Name</b>	HBP1
<b>Alternative Names</b>	HBP1; HMG box-containing protein 1; HMG box transcription factor 1; High mobility group box transcription factor 1
<b>Gene ID</b>	26959.0
<b>SwissProt ID</b>	O60381.The antiserum was produced against synthesized peptide derived from human HBP1 around the phosphorylation site of Ser402. AA range:371-420

## Application

<b>Dilution Ratio</b>	WB 1:500 - 1:2000 IHC 1:100 - 1:300. ELISA: 1:5000..
<b>Molecular Weight</b>	58kD

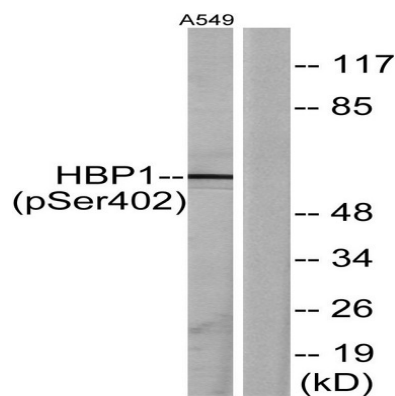
**Product Name: HBP1 (phospho Ser402) Rabbit Polyclonal Antibody**  
**Catalog #: APRab04757**

## Background

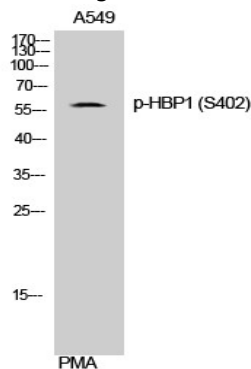
function:Transcriptional repressor that binds to the promoter region of target genes. Plays a role in the regulation of the cell cycle and of the Wnt pathway. Binds preferentially to the sequence 5'-TTCATTCATTCA-3'. Binding to the H1F0 promoter is enhanced by interaction with RB1. Disrupts the interaction between DNA and TCF4.,similarity:Contains 1 AXH domain.,similarity:Contains 1 HMG box DNA-binding domain.,subunit:Binds the second PAH repeat of SIN3A (By similarity). Binds TCF4 and RB1.,function:Transcriptional repressor that binds to the promoter region of target genes. Plays a role in the regulation of the cell cycle and of the Wnt pathway. Binds preferentially to the sequence 5'-TTCATTCATTCA-3'. Binding to the H1F0 promoter is enhanced by interaction with RB1. Disrupts the interaction between DNA and TCF4.,similarity:Contains 1 AXH domain.,similarity:Contains 1 HMG box DNA-binding domain.,subunit:Binds the second PAH repeat of SIN3A (By similarity). Binds TCF4 and RB1.,

## Research Area

## Image Data



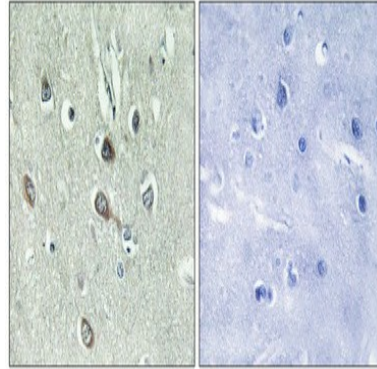
Western blot analysis of lysates from A549 cells treated with PMA 125ng/ml 30', using HBP1 (Phospho-Ser402) Antibody. The lane on the right is blocked with the phospho peptide.



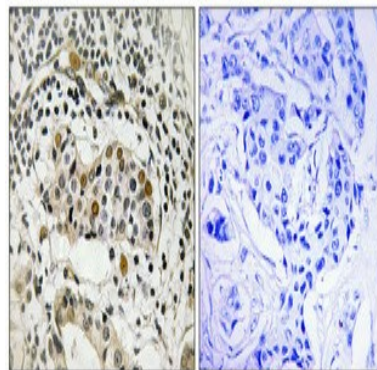
**Product Name: HBP1 (phospho Ser402) Rabbit  
Polyclonal Antibody  
Catalog #: APRab04757**

---

Western Blot analysis of A549 cells using Phospho-HBP1 (S402) Polyclonal Antibody cells nucleus extracted by Minute TM Cytoplasmic and Nuclear Fractionation kit (SC-003, Invent biotech, MN, USA) .



Immunohistochemical analysis of paraffin-embedded Human brain. Antibody was diluted at 1:100 (4°, overnight) . High-pressure and temperature Tris-EDTA, pH 8.0 was used for antigen retrieval. Negative control (right) obtained from antibody was pre-absorbed by immunogen peptide.



Immunohistochemical analysis of paraffin-embedded Human breast cancer. Antibody was diluted at 1:100 (4°, overnight) . High-pressure and temperature Tris-EDTA, pH 8.0 was used for antigen retrieval. Negative control (right) obtained from antibody was pre-absorbed by immunogen peptide.

**Note**

For research use only.