

Product Name: GSK3 α (phospho Ser21) Rabbit Polyclonal Antibody
Catalog #: APRab04751

Summary

Production Name	GSK3 α (phospho Ser21) Rabbit Polyclonal Antibody
Description	Rabbit Polyclonal Antibody
Host	Rabbit
Application	IHC,WB,ELISA
Reactivity	Human,Mouse,Rat

Performance

Conjugation	Unconjugated
Modification	Phospho Antibody
Isotype	IgG
Clonality	Polyclonal
Form	Liquid
Storage	Store at 4°C short term. Aliquot and store at -20°C long term. Avoid freeze/thaw cycles.
Buffer	Liquid in PBS containing 50% glycerol, 0.5% BSA and 0.02% New type preservative N.
Purification	Affinity purification

Immunogen

Gene Name	GSK3A
Alternative Names	GSK3A; Glycogen synthase kinase-3 alpha; GSK-3 alpha; Serine/threonine-protein kinase GSK3A
Gene ID	2931.0
SwissProt ID	P49840.The antiserum was produced against synthesized peptide derived from human GSK3 alpha around the phosphorylation site of Ser21. AA range:10-59

Application

Dilution Ratio	WB 1:500 - 1:2000. IHC 1:100 - 1:300. ELISA: 1:20000..
Molecular Weight	55kD

Product Name: GSK3 α (phospho Ser21) Rabbit Polyclonal Antibody
Catalog #: APRab04751

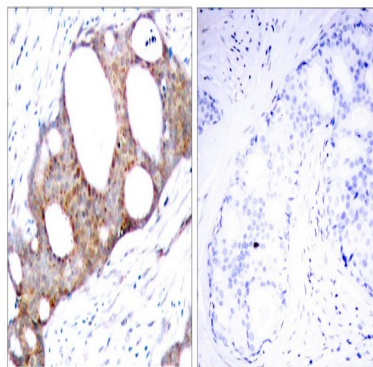
Background

glycogen synthase kinase 3 alpha(GSK3A) Homo sapiens This gene encodes a multifunctional Ser/Thr protein kinase that is implicated in the control of several regulatory proteins including glycogen synthase, and transcription factors, such as JUN. It also plays a role in the WNT and PI3K signaling pathways, as well as regulates the production of beta-amyloid peptides associated with Alzheimer's disease. [provided by RefSeq, Oct 2011],catalytic activity:ATP + [tau protein] = ADP + [tau protein] phosphate.,function:Implicated in the hormonal control of several regulatory proteins including glycogen synthase, MYB and the transcription factor JUN.,similarity:Belongs to the protein kinase superfamily.,similarity:Belongs to the protein kinase superfamily. CMGC Ser/Thr protein kinase family. GSK-3 subfamily.,similarity:Contains 1 protein kinase domain.,subunit:Monomer.,

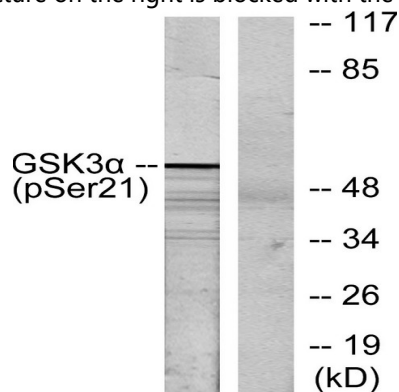
Research Area

Chemokine;

Image Data



Immunohistochemistry analysis of paraffin-embedded human breast carcinoma, using GSK3 alpha (Phospho-Ser21) Antibody. The picture on the right is blocked with the phospho peptide.

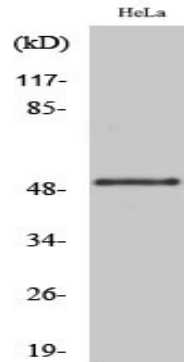


Western blot analysis of lysates from ovary cancer, using GSK3 alpha (Phospho-Ser21) Antibody. The lane on the right is

Product Name: GSK3 α (phospho Ser21) Rabbit Polyclonal Antibody
Catalog #: APRab04751



blocked with the phospho peptide.



Western Blot analysis of various cells using Phospho-GSK3 α (S21) Polyclonal Antibody

Note

For research use only.